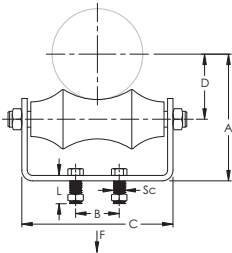


# 615 Pipe Roller Chair – 6151600HD



- Support pipe from a substructure or structural member where longitudinal movement may occur due to expansion or contraction
- Conforms with Federal Specification WW-H-171 (Type 45), Manufacturers Standardization Society ANSI®/MSS-SP-58 (Type 44)



Part Number	6151600HD
Material	Steel Cast Iron
Finish	Hot-Dip Galvanized Electrogalvanized
Pipe Size	16"
A	14 9/16"
B	8"
C	17 7/8"
D	9 7/16"
Screw Diameter (Sc)	5/8"
Screw Length (L)	2"
Static Load (F)	4,000 lb
Standard Packaging Quantity	1 pc
UPC	78285663550

Chair and axle are carbon steel and roll is cast iron.  
Install in accordance with applicable code.

ANSI is a registered trademark of American National Standards Institute.

#### WARNING

Pentair products shall be installed and used only as indicated in Pentair's product instruction sheets and training materials. Instruction sheets are available at [erico.pentair.com](http://erico.pentair.com) and from your Pentair customer service representative. Improper installation, misuse, misapplication or other failure to completely follow Pentair's instructions and warnings may cause product malfunction, property damage, serious bodily injury and death and/or void your warranty.

© 2018 Pentair All rights reserved

Pentair, CADDY, CADWELD, CRITEC, ERICO, ERIFLEX, ERITECH and LENTON are owned by Pentair or its global affiliates.

All other trademarks are the property of their respective owners. Pentair reserves the right to change specifications without prior notice.

