

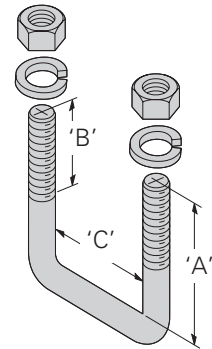
Mounting Hardware & Supports

"U" Bolt

- Includes: hardware shown
- Material: SAE J429 steel

- Finish___: Black zinc (BZ) or Yellow zinc (YZ)
Other finishes are available upon request

Part Number	'A'		'B'		'C'		Thread Size	Weight Per 100	
	In.	(mm)	In.	(mm)	In.	(mm)		Lbs.	(kg)
SB1001A__	3"	(76)	1¼"	(32)	3⅛"	(79)	½"-13	18	(8.1)
SB1001B__	4½"	(114)	1½"	(38)	3⅛"	(79)	½"-13	23	(10.4)
SB1001E__	5½"	(140)	1½"	(38)	1 ¹⁹ / ₃₂ "	(40)	¾"-16	34	(15.4)
SB1001M__	5"	(127)	1½"	(38)	4⅛"	(105)	½"-13	75	(34.0)
SB1001S__	5"	(127)	1"	(25)	5¼"	(133)	½"-13	84	(38.1)
SB1001U__	4"	(101)	1"	(25)	1 ⁹ / ₁₆ "	(39)	½"-13	54	(24.5)



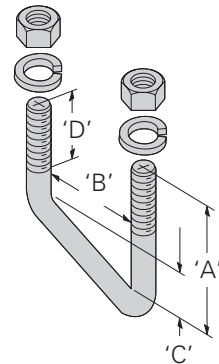
Specify part number and finish when ordering.

"V" Bolt

- Designed for use with angle iron
- Includes: hardware shown
- Material: SAE J429 steel

- Finish___: Black zinc (BZ) or Yellow zinc (YZ)
Other finishes are available upon request

Part Number	'A'		'B'		'C'		'D'		Thread Size	Weight Per 100	
	In.	(mm)	In.	(mm)	In.	(mm)	In.	(mm)		Lbs.	(kg)
SB100203A__	3"	(76)	2 ¹ / ₁₆ "	(52)	1⅛"	(28)	1¼"	(32)	¾"-16	21	(9.5)
SB100203B__	4"	(101)	2 ¹ / ₁₆ "	(52)	1⅛"	(28)	1½"	(32)	¾"-16	26	(11.8)
SB100203C__	6"	(152)	2 ¹ / ₁₆ "	(52)	1⅛"	(28)	1½"	(32)	¾"-16	36	(16.3)
SB100204B__	3"	(76)	2⅛"	(54)	2"	(51)	1 ³ / ₁₆ "	(20)	½"-13	44	(19.9)
SB100204D__	4"	(101)	2⅛"	(54)	2"	(51)	1½"	(32)	½"-13	52	(23.6)
SB100204G__	5"	(127)	2⅛"	(54)	2"	(51)	2"	(51)	½"-13	62	(28.1)
SB100204H__	6"	(152)	2⅛"	(54)	2"	(51)	2"	(51)	½"-13	71	(32.2)



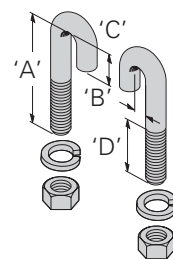
Specify part number and finish when ordering.

"J" Bolt

- Includes: hardware shown
- Material: SAE J429 steel

- Finish___: Black zinc (BZ) or Yellow zinc (YZ)
Other finishes are available upon request

Part Number	'A'		'B'		'C'		'D'		Thread Size	Weight Per 100	
	In.	(mm)	In.	(mm)	In.	(mm)	In.	(mm)		Lbs.	(kg)
SB1003A__	2"	(51)	¼"	(6)	½"	(13)	1"	(25)	5/16"-18	13	(5.9)
SB1003F__	4¼"	(108)	½"	(13)	¾"	(19)	1¼"	(32)	¾"-16	31	(14.0)
SB1003G__	3½"	(89)	1 ³ / ₁₆ "	(20)	¾"	(19)	1¼"	(32)	5/16"-18	20	(9.1)
SB1003J__	2¾"	(28)	7/16"	(11)	¾"	(19)	1¼"	(25)	5/16"-18	16	(7.2)
SB1003K__	5"	(127)	½"	(13)	¾"	(19)	1¼"	(32)	5/16"-18	25	(11.3)
SB1003M__	3¾"	(95)	7/16"	(11)	¾"	(19)	1¼"	(32)	5/16"-18	20	(9.1)



Specify part number and finish when ordering.