

Relay Interfaces

Relay modules R600

DIN 3

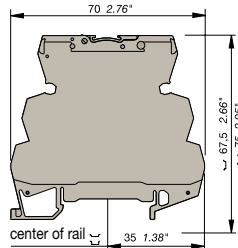


RB...122A - 2,5 mm² blocks - 12 mm .472" spacing

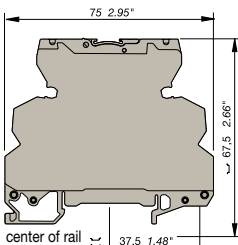
Characteristics

Relay characteristics		RB...122A				
COIL						
Rated voltage +20%, -15% on DC ; +10%, -10% on AC		24 V AC/DC	48 V AC/DC	60 V AC/DC	115 V AC/DC	±10% on AC +10% -15% on DC 230 V AC/DC
Frequency		50 / 60 Hz	50 / 60 Hz	50 / 60 Hz	50 / 60 Hz	50 / 60 Hz
Power		0,48 W	0,62 W	0,96 W	0,58 W	1,15 W
Rated current		20 mA	13 mA	16 mA	5 mA	5 mA
Drop-out voltage at 20°C		5,4 V	8,8 V	8,8 V	20 V	10 V
Status device		green LED				
CONTACT						
Type		1 DPDT				
Voltage switching range min./max.		5 V / 250 V DC - 250 V AC				
Current switching range min./max.		1 mA / 6 A				
Load switching range		5 mVA / 1500 VA 5 mW / 192 W				
AC1 min. / max.						
DC1 min. / max.						
Number of on-load operations		10 ⁵				
Number of off-load operations		2 x 10 ⁷				
Operating speed						
	F	6 ms	10 ms	10 ms	6 ms	6 ms
	O	10 ms	14 ms	14 ms	15 ms	15 ms
Bounce		1 ms				
Insulation coil / contact		4000 V RMS				
Resistance to shock coil / contact		4000 V RMS				
Insulation contact / contact		3500 V RMS				
Ambient temperature storage		-40°C to +80°C				
operating		-20°C to +70°C (1)				
Other characteristics		Screw clamp		Spring clamp		
Body material	grey <input type="checkbox"/>	UL 94 V0		UL 94 V0		
Wire	Solid wire	0,2 - 4 mm ² / 24 - 12 AWG		0,2 - 2,5 mm ² / 24 - 12 AWG		
size	Stranded wire	0,22 - 2,5 mm ² / 24 - 12 AWG		0,22 - 2,5 mm ² / 24 - 12 AWG		
Rated wire size		2,5 mm ² / 12 AWG		2,5 mm ² / 12 AWG		
Wire stripping length		9 mm .354"		9 mm .354"		
Recommended screwdriver		3,5 mm .137"		3,5 mm .137"		
Protection		IP20 NEMA1		IP20 NEMA1		
Recommended torque		0,4 - 0,6 Nm 3.5 - 5.3 lb.in		0,4 - 0,6 Nm 3.5 - 5.3 lb.in		
Approvals		cULus pending, CE				

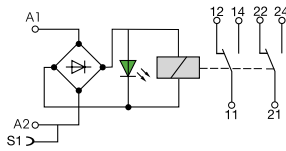
Reference standards CEI 947-7-1 / CEI 947-1 / CEI 1131-2 (in relevant parts) / CEI 60664-1 / CEM : IRC 1000-4-2, 3, 4, 5, 6.
(1) Over 55°C, blocks have to be mounted on horizontal rail with 10 mm spacing between each block. For vertical rail mounting use temperature is 15°C less decreased.



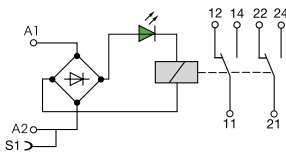
Screw clamp module



Spring clamp module



RB...122 A
24-48-60 V AC/DC



RB...122 A
115-230 V AC/DC

Order codes

Description	Type	Order P/N	Packaging	Weight
Screw clamp relay module	RB 122 A-24VAC/DC	1SNA 645 012 R2500	5	0,03
Screw clamp relay module	RB 122 A-48-60VAC/DC	1SNA 645 040 R1500	5	0,03
Screw clamp relay module	RB 122 A-115VAC/DC	1SNA 645 041 R0200	5	0,03
Screw clamp relay module	RB 122 A-230VAC/DC	1SNA 645 013 R2600	5	0,03
Spring clamp relay module	RBR 122 A-24VAC/DC	1SNA 645 512 R2700	5	0,03
Spring clamp relay module	RBR 122 A-48-60VAC/DC	1SNA 645 540 R1700	5	0,03
Spring clamp relay module	RBR 122 A-115VAC/DC	1SNA 645 541 R0400	5	0,03
Spring clamp relay module	RBR 122 A-230VAC/DC	1SNA 645 513 R2000	5	0,03

Accessories

End section	BADH V0	1SNA 116 900 R2700	50
	BADL V0	1SNA 399 903 R0200	50
	BAM2 V0	1SNA 399 967 R0100	50
Separator end section	SC 612	1SNA 290 474 R0200	10
Divisible shunt 10 poles	BJ 612-10	1SNA 290 488 R0100	10
	BJ 612-70	1SNA 290 489 R0200	10
Screw clamp distribution block sp. 12 mm	D4/12-3A-3A	1SNA 645 031 R2000	5
Spring clamp distribution block sp. 12 mm	D4/12-3L-3L	1SNA 645 531 R2200	5
Test plug DIA. 2 mm	FC2	1SNA 007 865 R2600	10
Marking method	RC65		
	RC610	see marking	

