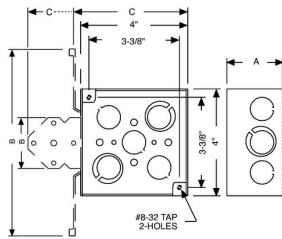




4 IN SQUARE WELDED BRACKETED BOXES - 2-1/8 IN. DEEP WITH CONDUIT KO'S

4 in. Square Bracketed Boxes, 2-1/8 in. Deep - Welded with Conduit KO's
600V, Raised Ground, 8 in. #12 Solid Copper Pigtail, UBS

A14



Catalog #: 232F

APPLICATIONS

RACO® Boxes are installed in walls or ceilings for lighting fixtures, switches or receptacles
Square boxes are used where multiple conductor runs are split into two or more directions to bring power to a number of electrical devices

PRODUCT FEATURES

Reference the Box Selection section in the front of this catalog for complete description of bracket types and features
Combination screw heads provide for faster installation
TKO® Knockouts offer greater flexibility with RACO patented combination 1/2" and 3/4" knockout
UBS Support - Welded to box, preset bend points to work with wall thickness 2-1/2" to 6"
N/A

UL LISTED

File E195978

COMPLIANCES

All RACO® single gang, two gang, 4 in. square, and single gang gangable UL listed steel boxes are acceptable for use in 2-hour fire rated walls. For additional information, consult UL "Fire Resistance Directory" or the UL website at www.ul.com
600V Per UL 514-A, suitable for use without a bonding jumper in circuits up to 600 volts

FIRE RESISTANCE

Acceptable for use in 2-hour rated walls

GENERAL PRODUCT INFORMATION

Wiring System: Conduit

CONFIGURATION

Bracket Type: No Bracket
Drawn or Welded: Welded
Raised Ground: Yes
Side Knockout(s): (8) 1/2 in. & (4) TKO®
Bottom Knockouts(s): (2) 1/2 in. & (2) TKO®

DRAWING DIMENSIONS

Dimension A: 2-1/8 in.

PRODUCT MEASUREMENTS

Depth: 2-1/8 in.
Cubic Inches (cm3): 30.3 (496.5)
Wt. Ea. (Lbs.): 0.950
Product Length (in.): 2.19
Product Width (in.): 4.00
Product Height (in.): 4.00

PACKAGING

Minimum Pack Qty.: 25
Std. Pkg.: 25
Product UPC-A Labeled: No
Weight (Lbs. Per/C): 95.00
Ship Carton Length (in.): 20.88
Ship Carton Width (in.): 9.00
Ship Carton Height (in.): 8.50
Ctn Weight (Lbs.): 22.45
Pallet Qty: 1375
UPC Number: 050169500057
I2of5: 50050169500052