

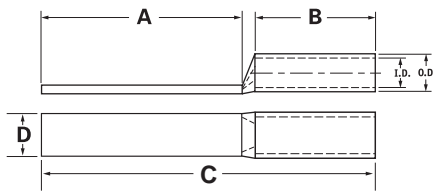
**TYPE
CLWU**

Features

- Manufactured from high strength seamless copper tubing
- Electro-Tin plated
- Chamfered entry
- Color coded
- UL467 Listed for grounding and bonding applications, #8-#2 solid, 500kcmil - 8 AWG
- Suitable for use in circuits rated 35KV or less, proper high voltage spacing and insulation techniques must be used
- UL Listed and CSA Certified with ILSCO and major competitor's compression tools

Benefits

- Offers maximum conductivity and excellent crimping characteristics
- Provides low contact resistance
- For easy conductor insertion
- Identifies the proper compression die
- Application versatility
- Reduces inventory requirements



Catalog Number	Wire Size	Alt Wire Size	Expanded* Wire Range	Dimensions				Die Color Code	Die Index	O.D.	I.D.
				A	B	C	D				
CLWU-6	#6 AWG	#6 FLEX, #6 SOL	-	3.000	1.130	4.32	0.760	BLUE	I-24	0.312	0.225
CLWU-4	#4 AWG	#4 SOL	4-6 AWG	3.000	1.130	4.359	0.760	GRAY	I-29	0.343	0.250
CLWU-3	#3 AWG	#4 FLEX	3-6 AWG	3.000	1.130	4.38	0.750	WHITE	I-29	0.375	0.275
CLWU-2	#2 AWG	#2 SOL	2-6 AWG	3.000	1.130	4.411	0.740	BROWN	I-33	0.421	0.312
CLWU-1	#1 AWG	#2 FLEX	1-6 AWG	3.000	1.380	4.705	0.740	GREEN	I-37	0.468	0.359
CLWU-1/0	1/0 AWG	#1 FLEX	1/0-6 AWG	3.000	1.500	4.856	0.740	PINK	I-42	0.515	0.390
CLWU-2/0	2/0 AWG	1/0 FLEX	2/0-4 AWG	3.000	1.500	4.896	0.810	BLACK	I-45	0.562	0.437
CLWU-3/0	3/0 AWG	2/0 FLEX	3/0-2 AWG	3.000	1.500	4.939	0.890	ORANGE	I-50	0.609	0.484
CLWU-4/0	4/0 AWG	3/0 FLEX	4/0-1 AWG	3.000	1.500	4.991	1.000	PURPLE	I-54	0.687	0.546
CLWU-250	250kcmil	4/0 FLEX	250kcmil - 1/0 AWG	3.000	1.690	5.219	1.090	YELLOW	I-62	0.750	0.593
CLWU-300	300kcmil	250 G,H FLEX	300kcmil - 2/0 AWG	3.000	2.000	5.587	1.190	WHITE	I-66	0.812	0.660
CLWU-350	350kcmil	250 I,K,M FLEX 262.2 DLO	350kcmil - 3/0 AWG	3.000	2.000	5.623	1.290	RED	I-71	0.890	0.703
CLWU-400	400kcmil	300 G,H,I,K,M FLEX 313.1 DLO	400kcmil - 4/0 AWG	3.000	2.130	5.792	1.370	BLUE	I-76	0.937	0.750
CLWU-500	500kcmil	350 G,H,I,K,M FLEX 373.7 DLO	500kcmil - 250kcmil	3.000	2.250	5.982	1.530	BROWN	I-87	1.062	0.828
CLWU-600	600kcmil	400 G,H,I,K,M FLEX 444.4 DLO	600kcmil - 250kcmil	3.000	2.690	6.496	1.710	GREEN	I-94	1.187	0.920
CLWU-650	650kcmil	500 G,H,I,K,M FLEX 535.3 DLO	650kcmil - 350kcmil	3.000	2.690	6.559	1.760	PINK	I-99	1.217	0.958
CLWU-700	700kcmil	500 G,H,I & K,M FLEX 535.3 DLO	700kcmil - 350kcmil	3.000	2.690	6.556	1.820	PINK	I-99	1.250	0.991
CLWU-750	750kcmil	600 G,H,I,M FLEX 646.4 DLO	750kcmil - 500kcmil	3.000	2.880	6.777	1.900	BLACK	I-106	1.313	1.031
CLWU-1000	1000kcmil	750 G,H,I FLEX 777.7 DLO	1000kcmil - 750kcmil	3.000	3.000	7.025	2.170	WHITE	I-125	1.500	1.172

All wire sizes, unless noted otherwise, are American Wire Gauge (AWG)

* When installed with specified dieless tools

UL File E6207