

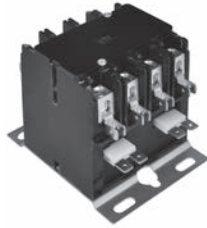
Definite Purpose Contactors

Product Overview/Catalog Number Explanation

1



2-pole



4-pole

Bulletin 400

- Available in the following ranges:
 - 1-Pole: 20/25...40 A, 600V max.
 - 2-Pole: 20/25...40 A, 600V max.
 - 3-Pole: 20/25...90 A, 600V max.
 - 4-Pole: 20/25...40 A, 600V max.

The Allen-Bradley Bulletin 400 Definite Purpose contactors are specifically designed for applications such as air-conditioning, refrigeration, resistive heating, data processing and food service equipment, pumps, and compressors.

Box lugs are standard on 40 A contactors and larger. A maximum of two auxiliary contact blocks (one on each side, four contacts max.) can be field installed.

Features Include:

- UL tested for lighting loads
- Compliant with international standards
- Standard and high fault short-circuit current rating (SCCR)

Table of Contents

Product Selection..... 1-6
 Accessories..... 1-10
 Modifications..... 1-10
 Specifications..... 1-11
 Approximate Dimensions 1-12

Standards Compliance

UL 508
 CSA C22.2 No. 14
 EN/IEC 60947-4-1

Certifications

UL Recognized (File No. E3125, Guide No. NLDX2)
 CSA Certified (File No. 221970)
 CE Marked
 SEMKO Certified
 CCC

Catalog Number Explanation

400 – DP40 N A 3 – K
 a b c d e

a

Current Rating	
Code	Full Load Amps [A]
DP25	20/25
DP30	30
DP40	40
DP50	50
DP60	60
DP75	75
DP90	90

b

Enclosure Code	
Code	Enclosure
N	No enclosure/No exceptions

c

Nominal Coil Voltage [V]	
Code	50/60 Hz Frequency
J	24
D	120
A	208/240
F	277
LF	347
B	480

d

Number of Poles	
Code	Description
1	1 pole
2	2 poles
3	3 poles
4	4 poles

e

Modifications	
Code	Description
B	Box lug with DP25 or DP30 in 2 nd position
D	400-DRA factory attached to DP (20/25...40 A)
E	2 poles with 3-pole base
K	#6-32 screw coil terminal with DP25, DP30, or DP40 in 2 nd position
R	Accept ring terminal for DP40...DP90
S	#10-32 SEMS terminal
T	Coil terminals down
U	Coil terminals on load side (T1/2, T2/4, T3/6) without quick connect (QC) line/load terminals
X	Without quick connect (QC) terminals on line and load

e (cont'd)

Modifications	
3- and 4-Pole 20/25, 30, and 40 A only (Steel Back Plate)	
Code	Description
AB1	Auxiliary contact – 1 N.O./1 N.C. with Quick Connect
A1	Auxiliary contact – SPDT with QC
A2	Auxiliary contact – 2 SPDT with QC
3-Pole 50...90 A only	
Code	Description
AB	Auxiliary contact – 1 N.O./1 N.C. with QC
A	Auxiliary contact – SPDT with QC
4-Pole 20/25, 30, and 40 A only (Molded Back Plate)	
Code	Description
AB5	Auxiliary contact – 1 N.O./1 N.C. with QC
A5	Auxiliary contact – SPDT with QC
AA5	Auxiliary contact – 2 SPDT with QC