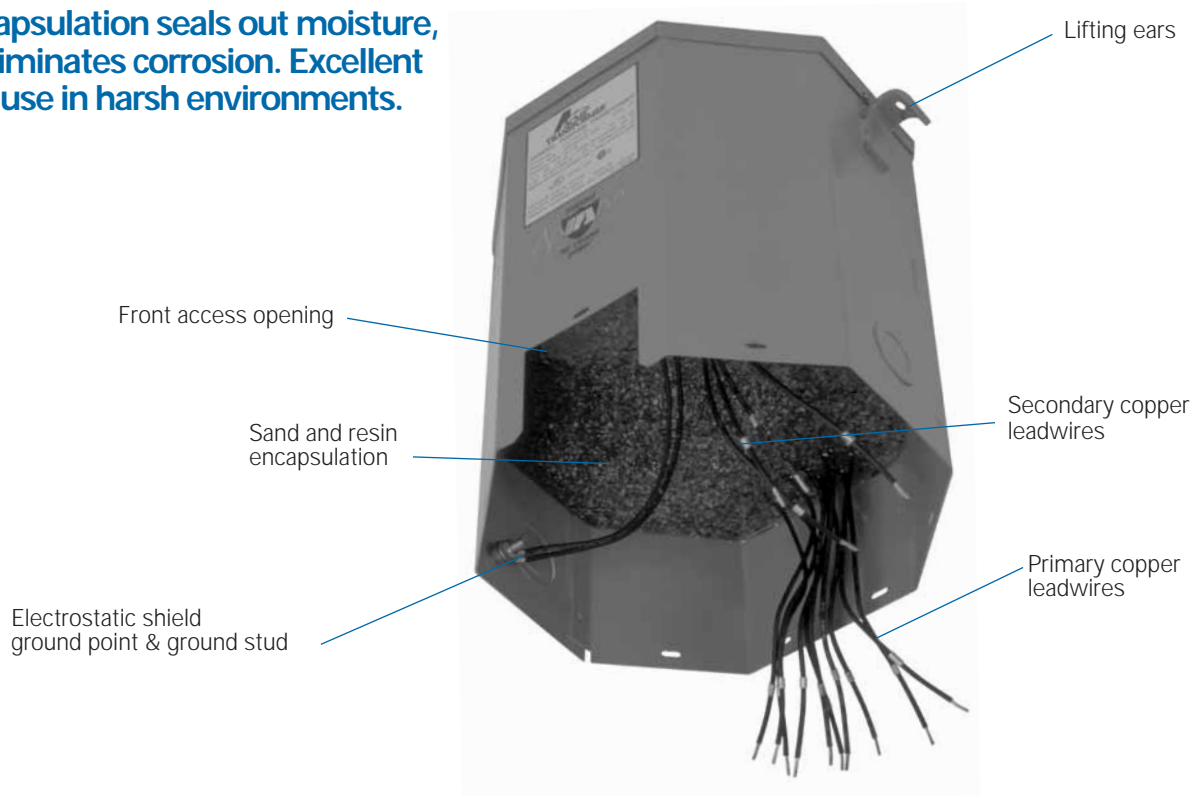


Resin Encapsulation seals out moisture, dirt and eliminates corrosion. Excellent choice for use in harsh environments.



Wound Core construction for lower losses and quiet operation.

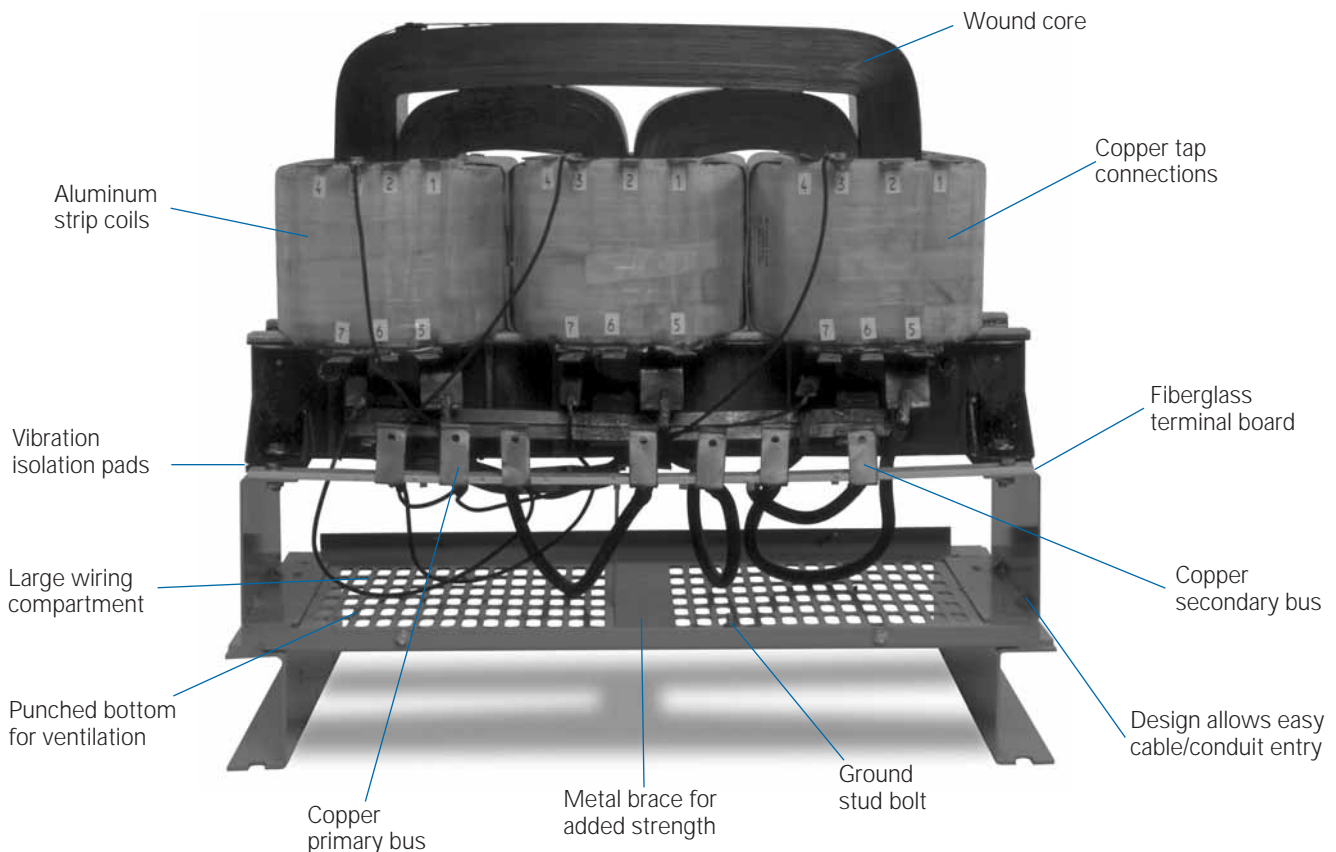


Photo representative of Drive Isolation Transformer

NOTE: These photographs are for illustration purposes only. Please contact factory for construction details.

SELECTION CHARTS

SINGLE PHASE

GROUP I



240 X 480 PRIMARY VOLTS — 120/240 SECONDARY VOLTS — FOUR WINDINGS — 1Ø, 60 Hz

KVA	CATALOG NO.	APPROX. DIMENSIONS Inches (Cm.)			APPROX. SHIP WEIGHT Lbs. (Kg.)	TYPE MTG. W – Wall F – Floor	KNOCKOUTS Inches (Cm.)	WEATHER SHIELD P/N	Wiring Diagrams & Design Figures Begin on Page 146
		HEIGHT	WIDTH	DEPTH					
① .05	T-1-53004	6.41 (16.3)	3.14 (8.0)	3.05 (7.7)	4 (1.8)	W	0.875 (2.2)	NA	1-A
① .10	T-1-53005	7.16 (18.2)	3.89 (9.9)	3.67 (9.3)	5 (2.3)	W	0.875 (2.2)	NA	1-A
① .15	T-1-53006	7.16 (18.2)	3.89 (9.9)	3.67 (9.3)	7 (3.2)	W	0.875 (2.2)	NA	1-A
① .25	T-2-53007-S	8.68 (22.0)	4.08 (10.4)	3.88 (9.9)	10 (4.5)	W	0.50-0.75 (1.3-1.9)	NA	2-B
① .50	T-2-53008-S	9.06 (23.0)	4.37 (11.1)	4.20 (10.7)	15 (6.8)	W	0.50-0.75 (1.3-1.9)	NA	2-B
① .75	T-2-53009-S	9.68 (24.6)	4.75 (12.1)	4.50 (11.4)	19 (8.6)	W	0.50-0.75 (1.3-1.9)	NA	2-B
1.00	T-2-53010-S	10.50 (26.7)	5.50 (14.0)	5.13 (13.0)	24 (10.9)	W	0.50-0.75 (1.3-1.9)	NA	2-B
1.50	T-2-53011-S	11.62 (29.5)	5.50 (14.0)	5.13 (13.0)	30 (13.6)	W	0.50-0.75 (1.3-1.9)	NA	2-B
2.00	T-2-53012-S	13.00 (33.0)	5.50 (14.0)	5.13 (13.0)	38 (17.2)	W	0.50-0.75 (1.3-1.9)	NA	2-B
3.00	T-2-53013-S	11.50 (29.2)	10.31 (26.2)	7.13 (18.1)	55 (24.9)	W	0.75-1.25 (1.9-3.2)	NA	2-C
3.00	T-2-53013-4S	11.50 (29.2)	10.31 (26.2)	7.13 (18.1)	55 (24.9)	W	0.75-1.25 (1.9-3.2)	NA	3-C
5.00	T-2-53014-S	14.38 (36.5)	10.31 (26.2)	7.13 (18.1)	75 (34.0)	W	0.75-1.25 (1.9-3.2)	NA	2-C
5.00	T-2-53014-4S	14.38 (36.5)	10.31 (26.2)	7.13 (18.1)	75 (34.0)	W	0.75-1.25 (1.9-3.2)	NA	3-C
7.50	T-2-53515-3S	15.19 (38.6)	13.50 (34.3)	10.84 (27.5)	115 (52.2)	W	0.75-1.25 (1.9-3.2)	NA	4-D
10.00	T-2-53516-3S	15.19 (38.6)	13.50 (34.3)	10.84 (27.5)	125 (56.7)	W	0.75-1.25 (1.9-3.2)	NA	4-D
15.00	T-2-53517-3S	16.94 (43.0)	14.12 (35.9)	11.59 (29.4)	170 (77.1)	W	1.00-1.50 (2.5-3.8)	NA	4-D
25.00	T-2-53518-3S	18.44 (46.8)	16.13 (41.0)	13.34 (33.9)	250 (113.0)	W	1.00-1.50 (2.5-3.8)	NA	4-D
37.50	T-2-53019-3S	25.50 (64.8)	24.39 (61.9)	19.37 (49.2)	280 (127.0)	F②	NA	WS-A-1	5-E
50.00	T-2-53020-3S	25.50 (64.8)	24.39 (61.9)	19.37 (49.2)	350 (158.8)	F②	NA	WS-A-1	5-E
75.00	T-2-53021-3S	35.47 (90.1)	31.90 (81.0)	26.88 (68.3)	430 (195.0)	F	NA	WS-A-3	5-E
100.00	T-2A-53022-3S	41.52 (105.5)	32.90 (83.6)	29.87 (75.9)	525 (238.0)	F	NA	WS-A-4	5-E
167.00	T-1-53023-3S	45.60 (115.8)	39.50 (100.3)	35.50 (90.2)	1050 (476.3)	F	NA	WS-A-5	5-E
250.00	T-2-53024-3S	45.60 (115.8)	39.50 (100.3)	35.50 (90.2)	1440 (653.2)	F	NA	WS-A-5	5-E

NEW

GROUP I-316SS

316 STAINLESS STEEL

240 X 480 PRIMARY VOLTS — 120/240 SECONDARY VOLTS — FOUR WINDINGS — 1Ø, 60 Hz

KVA	CATALOG NO.	APPROX. DIMENSIONS Inches (Cm.)			APPROX. SHIP WEIGHT Lbs. (Kg.)	TYPE MTG. W – Wall F – Floor	KNOCKOUTS Inches (Cm.)	WEATHER SHIELD P/N	Wiring Diagrams & Design Figures Begin on Page 146
		HEIGHT	WIDTH	DEPTH					
0.25	T-2-53007-SS	8.68 (22.0)	4.08 (10.4)	3.88 (9.9)	10 (4.5)	W	NA	NA	2-B
0.50	T-2-53008-SS	9.06 (23.0)	4.37 (11.1)	4.20 (10.7)	15 (6.8)	W	NA	NA	2-B
0.75	T-2-53009-SS	9.68 (24.6)	4.75 (12.1)	4.50 (11.4)	19 (8.6)	W	NA	NA	2-B
1.00	T-2-53010-SS	10.50 (26.7)	5.50 (14.0)	5.13 (13.0)	24 (10.9)	W	NA	NA	2-B
1.50	T-2-53011-SS	11.62 (29.5)	5.50 (14.0)	5.13 (13.0)	30 (13.6)	W	NA	NA	2-B
2.00	T-2-53012-SS	13.00 (33.0)	5.50 (14.0)	5.13 (13.0)	38 (17.2)	W	NA	NA	2-B
3.00	T-2-53013-SS	11.50 (29.2)	10.31 (26.2)	7.13 (18.1)	55 (24.9)	W	NA	NA	3-C
5.00	T-2-53014-SS	14.38 (36.5)	10.31 (26.2)	7.13 (18.1)	75 (34.0)	W	NA	NA	3-C
7.50	T-2-53515-SS	15.19 (38.6)	13.50 (34.3)	10.84 (27.5)	115 (52.2)	W	NA	NA	4-D
10.00	T-2-53516-SS	15.19 (38.6)	13.50 (34.3)	10.84 (27.5)	125 (56.7)	W	NA	NA	4-D
15.00	T-2-53517-SS	16.94 (43.0)	14.12 (35.9)	11.59 (29.4)	170 (77.1)	W	NA	NA	4-D
25.00	T-2-53518-SS	18.44 (46.8)	16.13 (41.0)	13.34 (33.9)	250 (113.0)	W	NA	NA	4-D

① Suitable for 50/60 Hz.

② Wall mounting brackets are available for these sizes, refer to page 157.

GROUP IA



240 X 480 PRIMARY VOLTS — COPPER WINDINGS — 120/240 SECONDARY VOLTS — FOUR WINDINGS — 1Ø, 60 Hz

KVA	CATALOG NO.	APPROX. DIMENSIONS Inches (Cm.)			APPROX. SHIP WEIGHT Lbs. (Kg.)	TYPE MTG. W – Wall F – Floor	KNOCKOUTS Inches (Cm.)	WEATHER SHIELD P/N	Wiring Diagrams & Design Figures Begin on Page 146
		HEIGHT	WIDTH	DEPTH					
7.50	TC-53515-3S	15.19 (38.6)	13.50 (34.3)	10.84 (27.5)	100 (45.4)	W	0.75-1.25 (1.9-3.2)	NA	4-D
10.00	TC-53516-3S	15.19 (38.6)	13.50 (34.3)	10.84 (27.5)	120 (54.4)	W	0.75-1.25 (1.9-3.2)	NA	4-D
15.00	TC-53517-3S	16.94 (43.0)	14.12 (35.9)	11.59 (29.4)	160 (72.6)	W	1.00-1.50 (2.5-3.8)	NA	4-D
25.00	TC-53518-3S	18.44 (46.8)	16.13 (41.0)	13.34 (33.9)	250 (113.0)	W	1.00-1.50 (2.5-3.8)	NA	4-D
37.50	TC-53019-3S	25.50 (64.8)	24.39 (61.9)	19.37 (49.2)	295 (133.8)	F②	NA	WS-A-1	5-E
50.00	TC-53020-3S	25.50 (64.8)	24.39 (61.9)	19.37 (49.2)	378 (172.0)	F②	NA	WS-A-1	5-E
75.00	TC-53021-3S	35.47 (90.1)	31.90 (81.0)	26.88 (68.3)	468 (212.3)	F	NA	WS-A-3	5-E
100.00	TC-53022-3S	41.52 (105.5)	32.90 (83.6)	29.87 (75.9)	768 (348.4)	F	NA	WS-A-4	5-E

GROUP II

NON-VENTILATED TRANSFORMERS — 240 X 480 PRIMARY VOLTS — 120/240 SECONDARY VOLTS — FOUR WINDINGS — 1Ø, 60 Hz

KVA	CATALOG NO.	APPROX. DIMENSIONS Inches (Cm.)			APPROX. SHIP WEIGHT Lbs. (Kg.)	TYPE MTG. W – Wall F – Floor	KNOCKOUTS Inches (Cm.)	WEATHER SHIELD P/N	Wiring Diagrams & Design Figures Begin on Page 146
		HEIGHT	WIDTH	DEPTH					
37.50	TE-2-53019-3S	35.47 (90.1)	31.90 (81.0)	26.90 (68.3)	430 (195.0)	F②	NA	NA	5-H
50.00	TE-2-53020-3S	35.47 (90.1)	31.90 (81.0)	26.90 (68.3)	430 (195.0)	F②	NA	NA	5-H
75.00	TE2A-53021-3S	35.47 (90.1)	31.90 (81.0)	26.90 (68.3)	525 (238.0)	F	NA	NA	5-H
100.00	TE-1-53022-3S	42.00 (106.7)	40.00 (101.6)	30.00 (76.2)	775 (352.0)	F	NA	NA	5-H

GROUP III

120 X 240 PRIMARY VOLTS — 120/240 SECONDARY VOLTS — FOUR WINDINGS — 1Ø, 60 Hz

KVA	CATALOG NO.	APPROX. DIMENSIONS Inches (Cm.)			APPROX. SHIP WEIGHT Lbs. (Kg.)	TYPE MTG. W – Wall F – Floor	KNOCKOUTS Inches (Cm.)	WEATHER SHIELD P/N	Wiring Diagrams & Design Figures Begin on Page 146
		HEIGHT	WIDTH	DEPTH					
1.0	T-3-53040-S	10.50 (26.7)	5.50 (14.0)	5.13 (13.0)	24 (10.9)	W	0.50-0.75 (1.3-1.9)	NA	13-B
1.5	T-3-53041-S	11.62 (29.5)	5.50 (14.0)	5.13 (13.0)	30 (13.6)	W	0.50-0.75 (1.3-1.9)	NA	13-B
2.0	T-3-53042-S	13.00 (33.0)	5.50 (14.0)	5.13 (13.0)	38 (17.2)	W	0.50-0.75 (1.3-1.9)	NA	13-B
3.0	T-3-53043-S	11.50 (29.2)	10.31 (26.2)	7.13 (18.1)	55 (24.9)	W	0.75-1.25 (1.9-3.2)	NA	13-C
5.0	T-3-53044-S	14.38 (36.5)	10.31 (26.2)	7.13 (18.1)	75 (34.0)	W	0.75-1.25 (1.9-3.2)	NA	13-C
7.5	T-3-53545-S	15.19 (38.6)	13.50 (34.3)	10.84 (27.5)	115 (52.2)	W	0.75-1.25 (1.9-3.2)	NA	13-D
10.0	T-3-53546-S	15.19 (38.6)	13.50 (34.3)	10.84 (27.5)	125 (56.7)	W	0.75-1.25 (1.9-3.2)	NA	13-D
15.0	T-3-53547-S	16.94 (43.0)	14.12 (35.9)	11.59 (29.4)	170 (77.1)	W	1.00-1.50 (2.5-3.8)	NA	13-D
25.0	T-3-53548-S	18.44 (46.8)	16.13 (41.0)	13.34 (33.9)	250 (113.0)	W	1.00-1.50 (2.5-3.8)	NA	13-D

① Suitable for 50/60 Hz.

② Wall mounting brackets are available for these sizes, refer to page 157.

GROUP IV



600 PRIMARY VOLTS — 120/240 SECONDARY VOLTS — THREE WINDINGS — 1Ø, 60 Hz

KVA	CATALOG NO.	APPROX. DIMENSIONS Inches (Cm.)			APPROX. SHIP WEIGHT Lbs. (Kg.)	TYPE MTG. W – Wall F – Floor	KNOCKOUTS Inches (Cm.)	WEATHER SHIELD P/N	Wiring Diagrams & Design Figures Begin on Page 146
		HEIGHT	WIDTH	DEPTH					
① .05	T-1-53104	6.41 (16.3)	3.14 (8.0)	3.05 (7.7)	4 (1.8)	W	0.875 (2.2)	NA	8-A
① .10	T-1-53105	7.16 (18.2)	3.89 (9.9)	3.67 (9.3)	5 (2.3)	W	0.875 (2.2)	NA	8-A
① .15	T-1-53106	7.16 (18.2)	3.89 (9.9)	3.67 (9.3)	7 (3.2)	W	0.875 (2.2)	NA	8-A
① .25	T-2-53107-S	8.68 (22.0)	4.08 (10.4)	3.88 (9.9)	10 (4.5)	W	0.50-0.75 (1.3-1.9)	NA	9-B
① .50	T-2-53108-S	9.06 (23.0)	4.37 (11.1)	4.20 (10.7)	15 (6.8)	W	0.50-0.75 (1.3-1.9)	NA	9-B
① .75	T-2-53109-S	9.68 (24.6)	4.75 (12.1)	4.50 (11.4)	19 (8.6)	W	0.50-0.75 (1.3-1.9)	NA	9-B
1.00	T-2-53110-S	10.50 (26.7)	5.50 (14.0)	5.13 (13.0)	24 (10.9)	W	0.50-0.75 (1.3-1.9)	NA	9-B
1.50	T-2-53111-S	11.62 (29.5)	5.50 (14.0)	5.13 (13.0)	30 (13.6)	W	0.50-0.75 (1.3-1.9)	NA	9-B
2.00	T-2-53112-S	13.00 (33.0)	5.50 (14.0)	5.13 (13.0)	38 (17.2)	W	0.50-0.75 (1.3-1.9)	NA	9-B
3.00	T-2-53113-1S	11.50 (29.2)	10.31 (26.2)	7.13 (18.1)	55 (24.9)	W	0.75-1.25 (1.9-3.2)	NA	10-C
5.00	T-2-53114-1S	14.38 (36.5)	10.31 (26.2)	7.13 (18.1)	75 (34.0)	W	0.75-1.25 (1.9-3.2)	NA	10-C
7.50	T-2-53615-1S	15.19 (38.6)	13.50 (34.3)	10.84 (27.5)	115 (52.2)	W	0.75-1.25 (1.9-3.2)	NA	10-D
10.00	T-2-53616-1S	15.19 (38.6)	13.50 (34.3)	10.84 (27.5)	125 (56.7)	W	0.75-1.25 (1.9-3.2)	NA	10-D
15.00	T-2-53617-1S	16.94 (43.0)	14.12 (35.9)	11.59 (29.4)	170 (77.1)	W	1.00-1.50 (2.5-3.8)	NA	10-D
25.00	T-2-53618-1S	18.44 (46.8)	16.13 (41.0)	13.34 (33.9)	250 (113.0)	W	1.00-1.50 (2.5-3.8)	NA	10-D
37.50	T-2-53119-3S	25.50 (64.8)	24.40 (62.0)	19.40 (49.3)	275 (125.0)	F ②	NA	WS-A-1	11-E
50.00	T-2-53120-3S	29.90 (76.0)	28.15 (71.5)	22.37 (56.8)	340 (154.0)	F ②	NA	WS-A-2	11-E
75.00	T-2-53121-3S	35.47 (90.1)	31.90 (81.0)	26.88 (68.3)	420 (191.0)	F	NA	WS-A-3	11-E
100.00	T-2A-53122-3S	41.52 (105.5)	32.90 (83.6)	29.87 (75.9)	525 (238.0)	F	NA	WS-A-4	11-E
167.00	T-1-53123-3S	45.60 (115.8)	39.50 (100.3)	35.50 (90.2)	700 (318.0)	F	NA	WS-A-5	11-E

GROUP V

208 PRIMARY VOLTS — 120/240 SECONDARY VOLTS — THREE WINDINGS — 1Ø, 60 Hz

KVA	CATALOG NO.	APPROX. DIMENSIONS Inches (Cm.)			APPROX. SHIP WEIGHT Lbs. (Kg.)	TYPE MTG. W – Wall F – Floor	KNOCKOUTS Inches (Cm.)	WEATHER SHIELD P/N	Wiring Diagrams & Design Figures Begin on Page 146
		HEIGHT	WIDTH	DEPTH					
1.0	T-2-53140-1S	10.50 (26.7)	5.50 (14.0)	5.13 (13.0)	24 (10.9)	W	0.50-0.75 (1.3-1.9)	NA	6-B
1.5	T-2-53141-1S	11.62 (29.5)	5.50 (14.0)	5.13 (13.0)	30 (13.6)	W	0.50-0.75 (1.3-1.9)	NA	6-B
2.0	T-2-53142-1S	13.00 (33.0)	5.50 (14.0)	5.13 (13.0)	38 (17.2)	W	0.50-0.75 (1.3-1.9)	NA	6-B
3.0	T-2-53143-1S	11.50 (29.2)	10.31 (26.2)	7.13 (18.1)	55 (24.9)	W	0.75-1.25 (1.9-3.2)	NA	6-C
5.0	T-2-53144-1S	14.38 (36.5)	10.31 (26.2)	7.13 (18.1)	75 (34.0)	W	0.75-1.25 (1.9-3.2)	NA	6-C
7.5	T-2-53645-1S	15.19 (38.6)	13.50 (34.3)	10.84 (27.5)	115 (52.2)	W	0.75-1.25 (1.9-3.2)	NA	6-D
10.0	T-2-53646-1S	15.19 (38.6)	13.50 (34.3)	10.84 (27.5)	125 (56.7)	W	0.75-1.25 (1.9-3.2)	NA	6-D
15.0	T-2-53647-1S	16.94 (43.0)	14.12 (35.9)	11.59 (29.4)	170 (77.1)	W	1.00-1.50 (2.5-3.8)	NA	6-D
25.0	T-2-53648-1S	18.44 (46.8)	16.13 (41.0)	13.34 (33.9)	250 (113.0)	W	1.00-1.50 (2.5-3.8)	NA	6-D
37.5	T-2-53649-1S	25.48 (64.7)	24.39 (62.0)	19.37 (49.2)	257 (117.0)	F ②	N/A	WS-A-1	58-E
50.0	T-2-53650-3S	25.48 (64.7)	24.39 (62.0)	19.37 (49.2)	340 (154.2)	F ②	N/A	WS-A-1	17-E
NEW 75.0	T-2-53651-3S	35.40 (89.9)	31.90 (81.0)	26.88 (68.2)	420 (190.5)	F ②	N/A	WS-A-3	17-E

① Suitable for 50/60 Hz.

② Wall mounting brackets are available for these sizes, refer to page 157.

GROUP VI



277 PRIMARY VOLTS — 120/240 SECONDARY VOLTS — THREE WINDINGS — 1Ø, 60 Hz

KVA	CATALOG NO.	APPROX. DIMENSIONS Inches (Cm.)			APPROX. SHIP WEIGHT Lbs. (Kg.)	TYPE MTG. W – Wall F – Floor	KNOCKOUTS Inches (Cm.)	WEATHER SHIELD P/N	Wiring Diagrams & Design Figures Begin on Page 146
		HEIGHT	WIDTH	DEPTH					
1.0	T-2-53170-1S	10.50 (26.7)	5.50 (14.0)	5.13 (13.0)	24 (10.9)	W	0.50-0.75 (1.3-1.9)	NA	7-B
1.5	T-2-53171-1S	11.62 (29.5)	5.50 (14.0)	5.13 (13.0)	30 (13.6)	W	0.50-0.75 (1.3-1.9)	NA	7-B
2.0	T-2-53172-1S	13.00 (33.0)	5.50 (14.0)	5.13 (13.0)	38 (17.2)	W	0.50-0.75 (1.3-1.9)	NA	7-B
3.0	T-2-53173-1S	11.50 (29.2)	10.31 (26.2)	7.13 (18.1)	55 (24.9)	W	0.75-1.25 (1.9-3.2)	NA	7-C
5.0	T-2-53174-1S	14.38 (36.5)	10.31 (26.2)	7.13 (18.1)	75 (34.0)	W	0.75-1.25 (1.9-3.2)	NA	7-C
7.5	T-2-53675-1S	15.19 (38.6)	13.50 (34.3)	10.84 (27.5)	115 (52.2)	W	0.75-1.25 (1.9-3.2)	NA	7-D
10.0	T-2-53676-1S	15.19 (38.6)	13.50 (34.3)	10.84 (27.5)	125 (56.7)	W	0.75-1.25 (1.9-3.2)	NA	7-D
15.0	T-2-53677-1S	16.94 (43.0)	14.12 (35.9)	11.59 (29.4)	170 (77.1)	W	1.00-1.50 (2.5-3.8)	NA	7-D
25.0	T-2-53678-1S	18.44 (46.8)	16.13 (41.0)	13.34 (33.9)	250 (113.0)	W	1.00-1.50 (2.5-3.8)	NA	7-D

GROUP VII

120/208/240/277 PRIMARY VOLTS -- 120/240 SECONDARY VOLTS -- 1Ø, 60 Hz

KVA	CATALOG NO.	APPROX. DIMENSIONS Inches (Cm.)			APPROX. SHIP WEIGHT Lbs. (Kg.)	TYPE MTG. W – Wall F – Floor	KNOCKOUTS Inches (Cm.)	WEATHER SHIELD P/N	Wiring Diagrams & Design Figures Begin on Page 146
		HEIGHT	WIDTH	DEPTH					
1.0	T-2-79740-S	10.50 (26.7)	5.50 (14.0)	5.13 (13.0)	23 (10.4)	W	0.50-0.75 (1.3-1.9)	NA	23-B
1.5	T-2-79741-S	11.62 (29.5)	5.50 (14.0)	5.13 (13.0)	30 (13.6)	W	0.50-0.75 (1.3-1.9)	NA	23-B
2.0	T-2-79742-S	13.00 (33.0)	5.50 (14.0)	5.13 (13.0)	37 (16.8)	W	0.50-0.75 (1.3-1.9)	NA	23-B
3.0	T-2-79743-S	11.50 (29.2)	10.31 (26.2)	7.13 (18.1)	55 (24.9)	W	0.75-1.25 (1.9-3.2)	NA	23-C
5.0	T-2-79744-S	14.38 (36.5)	10.31 (26.2)	7.13 (18.1)	75 (34.0)	W	0.75-1.25 (1.9-3.2)	NA	23-C
7.5	T-2-79745-S	15.19 (38.6)	13.50 (34.3)	10.84 (27.5)	105 (47.6)	W	0.75-1.25 (1.9-3.2)	NA	63-D
10.0	T-2-79746-S	15.19 (38.6)	13.50 (34.3)	10.84 (27.5)	124 (56.2)	W	0.75-1.25 (1.9-3.2)	NA	63-D
15.0	T-2-79747-S	16.94 (43.0)	14.12 (35.9)	11.59 (29.4)	171 (77.6)	W	1.00-1.50 (2.5-3.8)	NA	63-D
25.0	T-2-79748-S	18.44 (46.8)	16.13 (41.0)	13.34 (33.9)	261 (118.4)	W	1.00-1.50 (2.5-3.8)	NA	63-D

GROUP VIII

AUTO-TRANSFORMERS

240 PRIMARY VOLTS — 120/240 SECONDARY VOLTS — 1Ø, 60 Hz

KVA	CATALOG NO.	APPROX. DIMENSIONS Inches (Cm.)			APPROX. SHIP WEIGHT Lbs. (Kg.)	TYPE MTG. W – Wall F – Floor	KNOCKOUTS Inches (Cm.)	WEATHER SHIELD P/N	Wiring Diagrams & Design Figures Begin on Page 146
		HEIGHT	WIDTH	DEPTH					
1.0	T-2-53060	9.06 (23.0)	4.37 (11.1)	4.20 (10.7)	15 (6.8)	W	0.50-0.75 (1.3-1.9)	NA	12-B
1.5	T-2-53061	9.68 (24.6)	4.50 (11.4)	4.51 (11.5)	19 (8.6)	W	0.50-0.75 (1.3-1.9)	NA	12-B
2.0	T-2-53062	10.50 (26.7)	5.50 (14.0)	5.13 (13.0)	24 (10.9)	W	0.50-0.75 (1.3-1.9)	NA	12-B
3.0	T-2-53063	11.62 (29.5)	5.50 (14.0)	5.13 (13.0)	30 (13.6)	W	0.50-0.75 (1.3-1.9)	NA	12-B
5.0	T-2-53064	13.00 (33.0)	5.50 (14.0)	5.13 (13.0)	38 (17.2)	W	0.50-0.75 (1.3-1.9)	NA	12-B
7.5	T-2-53065	11.50 (29.2)	10.31 (26.2)	7.13 (18.1)	55 (24.9)	W	0.75-1.25 (1.9-3.2)	NA	12-C
10.0	T-2-53066	15.19 (38.6)	13.50 (34.3)	10.84 (27.5)	115 (52.2)	W	0.75-1.25 (1.9-3.2)	NA	12-D
15.0	T-2-53067	15.19 (38.6)	13.50 (34.3)	10.84 (27.5)	115 (52.2)	W	0.75-1.25 (1.9-3.2)	NA	12-D

GROUP IX



EXPORT MODEL

190/200/208/220 X 380/400/416/440 PRIMARY VOLTS

120/240 SECONDARY VOLTS — 1Ø, 50/60 Hz

KVA	CATALOG NO.	APPROX. DIMENSIONS Inches (Cm.)			APPROX. SHIP WEIGHT Lbs. (Kg.)	TYPE MTG. W – Wall F – Floor	KNOCKOUTS Inches (Cm.)	WEATHER SHIELD P/N	Wiring Diagrams & Design Figures Begin on Page 146
		HEIGHT	WIDTH	DEPTH					
* 1.0	TF-2-17437-S	10.50 (26.7)	5.50 (14.0)	5.13 (13.0)	24 (10.9)	W	0.50-0.75 (1.3-1.9)	NA	14-B
* 2.0	TF-2-17439-S	13.00 (33.0)	5.50 (14.0)	5.13 (13.0)	38 (17.2)	W	0.50-0.75 (1.3-1.9)	NA	14-B
* 3.0	TF-2-49873-S	11.50 (29.2)	10.31 (26.2)	7.13 (18.1)	55 (24.9)	W	0.75-1.25 (1.9-3.2)	NA	14-C
* 5.0	TF-2-52520-S	14.38 (36.5)	10.31 (26.2)	7.13 (18.1)	75 (34.0)	W	0.75-1.25 (1.9-3.2)	NA	14-C
* 7.5	TF-2-52794-S	15.19 (38.6)	13.50 (34.3)	10.84 (27.5)	115 (52.2)	W	0.75-1.25 (1.9-3.2)	NA	14-D
* 10.0	TF-2-52795-S	15.19 (38.6)	13.50 (34.3)	10.84 (27.5)	125 (56.7)	W	0.75-1.25 (1.9-3.2)	NA	14-D
* 15.0	TF-2-52796-S	16.94 (43.0)	14.12 (35.9)	11.59 (29.4)	170 (77.1)	W	1.00-1.50 (2.5-3.8)	NA	14-D
* 25.0	TF-2-52797-S	18.44 (46.8)	16.13 (41.0)	13.34 (33.9)	300 (136.0)	W	1.00-1.50 (2.5-3.8)	NA	14-D
37.5	TF-2-69218-S ^①	25.48 (64.5)	24.39 (62.0)	19.37 (49.2)	285 (129.0)	F	NA	WS-A-1	15-E
50.0	TF-2-69219-S ^①	29.41 (74.7)	28.15 (71.5)	22.37 (56.8)	380 (172.0)	F	NA	WS-A-2	15-E
75.0	TF-2-69220-S ^①	35.47 (91.2)	31.90 (81.0)	26.88 (68.3)	445 (201.8)	F	NA	WS-A-3	15-E
100.0	TF-2A-69221-S ^①	41.52 (105.4)	32.90 (83.6)	29.87 (75.9)	525 (238.0)	F	NA	WS-A-4	15-E

* CE Marked

GROUP X

EXPORT MODEL^②

190/208/220/240 x 380/416/440/480 PRIMARY VOLTS — 120/240 SECONDARY VOLTS — 1Ø, 50/60 Hz

KVA	CATALOG NO.	APPROX. DIMENSIONS Inches (Cm.)			APPROX. SHIP WEIGHT Lbs. (Kg.)	TYPE MTG. W – Wall F – Floor	KNOCKOUTS Inches (Cm.)	WEATHER SHIELD P/N	Wiring Diagrams & Design Figures Begin on Page 146
		HEIGHT	WIDTH	DEPTH					
* 1.0	TF-2-79260-S	10.50 (26.7)	5.50 (14.0)	5.13 (13.0)	24 (10.9)	W	0.50-0.75 (1.3-1.9)	NA	64-B
* 2.0	TF-2-79261-S	13.00 (33.0)	5.50 (14.0)	5.13 (13.0)	38 (17.2)	W	0.50-0.75 (1.3-1.9)	NA	64-B
* 3.0	TF-2-79262-S	11.50 (29.2)	10.31 (26.2)	7.13 (18.1)	55 (24.9)	W	0.75-1.25 (1.9-3.2)	NA	64-C
* 5.0	TF-2-79263-S	14.38 (36.5)	10.31 (26.2)	7.13 (18.1)	75 (34.0)	W	0.75-1.25 (1.9-3.2)	NA	64-C
* 7.5	TF-2-79264-S	15.19 (38.6)	13.50 (34.3)	10.84 (27.5)	115 (52.2)	W	0.75-1.25 (1.9-3.2)	NA	64-D
* 10.0	TF-2-79265-S	15.19 (38.6)	13.50 (34.3)	10.84 (27.5)	125 (56.7)	W	0.75-1.25 (1.9-3.2)	NA	64-D
* 15.0	TF-2-79266-S	16.94 (43.0)	14.12 (35.9)	11.59 (29.4)	170 (77.1)	W	1.00-1.50 (2.5-3.8)	NA	64-D
* 25.0	TF-2-79267-S	18.44 (46.8)	16.13 (41.0)	13.34 (33.9)	300 (136.1)	W	1.00-1.50 (2.5-3.8)	NA	64-D

* CE Marked

GROUP XI

EXPORT MODEL^②

190/200/208/220 x 380/400/416/440 PRIMARY VOLTS — 110/220 SECONDARY VOLTS — 1Ø, 50/60 Hz

KVA	CATALOG NO.	APPROX. DIMENSIONS Inches (Cm.)			APPROX. SHIP WEIGHT Lbs. (Kg.)	TYPE MTG. W – Wall F – Floor	KNOCKOUTS Inches (Cm.)	WEATHER SHIELD P/N	Wiring Diagrams & Design Figures Begin on Page 146
		HEIGHT	WIDTH	DEPTH					
* 1.0	TF-2-79300-S	10.50 (26.7)	5.50 (14.0)	5.13 (13.0)	24 (10.9)	W	0.50-0.75 (1.3-1.9)	NA	65-B
* 2.0	TF-2-79301-S	13.00 (33.0)	5.50 (14.0)	5.13 (13.0)	38 (17.2)	W	0.50-0.75 (1.3-1.9)	NA	65-B
* 3.0	TF-2-79302-S	11.50 (29.2)	10.31 (26.2)	7.13 (18.1)	55 (24.9)	W	0.75-1.25 (1.9-3.2)	NA	65-C
* 5.0	TF-2-79303-S	14.38 (36.5)	10.31 (26.2)	7.13 (18.1)	75 (34.0)	W	0.75-1.25 (1.9-3.2)	NA	65-C
* 7.5	TF-2-79304-S	15.19 (38.6)	13.50 (34.3)	10.84 (27.5)	115 (52.2)	W	0.75-1.25 (1.9-3.2)	NA	65-D

* CE Marked

① Wall mounting brackets are available for these sizes, refer to page 157.

② Maximum exciting current 5% at 50 Hz.

NEW

GROUP XII



277/480 PRIMARY VOLTS — 208/277 SECONDARY VOLTS — 1Ø, 60 Hz

KVA	CATALOG NO.	APPROX. DIMENSIONS Inches (Cm.)			APPROX. SHIP WEIGHT Lbs. (Kg.)	TYPE MTG. W – Wall F – Floor	KNOCKOUTS Inches (Cm.)	WEATHER SHIELD P/N	Wiring Diagrams & Design Figures Begin on Page 146
		HEIGHT	WIDTH	DEPTH					
0.25	GP12-250-S	8.68 (22.0)	4.08 (10.4)	3.88 (9.9)	12 (5.4)	W	0.50-0.75 (1.3-1.9)	NA	78-B
0.50	GP12-500-S	9.06 (23.0)	4.37 (11.1)	4.20 (10.7)	19 (8.6)	W	0.50-0.75 (1.3-1.9)	NA	78-B
1.00	GP12-1000-S	10.50 (26.7)	5.50 (14.0)	5.13 (13.0)	30 (13.6)	W	0.50-0.75 (1.3-1.9)	NA	78-B
3.00	GP12-3000-S	11.50 (29.2)	10.31 (26.2)	7.13 (18.1)	58 (26.3)	W	0.75-1.25 (1.9-3.2)	NA	78-C
5.00	GP12-5000-S	14.38 (36.5)	10.31 (26.2)	7.13 (18.1)	80 (36.3)	W	0.75-1.25 (1.9-3.2)	NA	78-C
10.00	GP12-10000-S	15.19 (38.6)	13.50 (34.3)	10.84 (27.5)	125 (56.7)	W	0.75-1.25 (1.9-3.2)	NA	79D
15.00	GP12-15000-S	16.94 (43.0)	14.12 (35.9)	11.59 (29.4)	161 (70.0)	W	1.00-1.50 (2.5-3.8)	NA	79-D

SELECTION CHARTS

THREE PHASE

GROUP A



208 DELTA PRIMARY VOLTS — 480Y/277 SECONDARY VOLTS — 3Ø, 60 Hz

KVA	CATALOG NO.	APPROX. DIMENSIONS Inches (Cm.)			APPROX. SHIP WEIGHT Lbs. (Kg.)	TYPE MTG. W – Wall F – Floor	KNOCKOUTS Inches (Cm.)	WEATHER SHIELD P/N	Wiring Diagrams & Design Figures Begin on Page 146
		HEIGHT	WIDTH	DEPTH					
15.0	T-3-79367-1S	18.86 (48.0)	20.30 (51.6)	9.03 (22.9)	245 (111.0)	F ①	NA	NA	48-I
30.0	T-2-79368-4S	25.50 (64.8)	24.40 (62.0)	19.40 (49.3)	330 (150.0)	F ①	NA	WS-A-1	46-E
45.0	T-2-79369-4S	25.50 (64.8)	24.40 (62.0)	19.40 (49.3)	400 (181.0)	F ①	NA	WS-A-1	46-E
75.0	T-2-79370-4S	29.41 (74.7)	28.15 (71.5)	22.37 (56.8)	530 (240.0)	F ①	NA	WS-A-2	46-E
112.5	T-2-79371-4S	35.47 (90.1)	31.90 (81.0)	26.90 (68.3)	750 (340.0)	F	NA	WS-A-3	46-E
150.0	T-2-79372-4S	41.52 (105.5)	32.90 (83.6)	29.87 (75.9)	950 (430.9)	F	NA	WS-A-4	46-E
225.0	T-2-79373-4S	41.52 (105.5)	32.90 (83.6)	29.87 (75.9)	1200 (544.0)	F	NA	WS-A-4	46-E
300.0	T-3-79374-4S	45.60 (115.8)	39.50 (100.3)	35.50 (90.2)	1550 (703.0)	F	NA	WS-A-5	46-E
500.0	T-2-79376-2S	57.80 (146.8)	45.00 (114.3)	41.50 (105.4)	3500 (1588.0)	F	NA	WS-A-7	② G

GROUP B

240 DELTA PRIMARY VOLTS — 208Y/120 SECONDARY VOLTS — 3Ø, 60 Hz

KVA	CATALOG NO.	APPROX. DIMENSIONS Inches (Cm.)			APPROX. SHIP WEIGHT Lbs. (Kg.)	TYPE MTG. W – Wall F – Floor	KNOCKOUTS Inches (Cm.)	WEATHER SHIELD P/N	Wiring Diagrams & Design Figures Begin on Page 146
		HEIGHT	WIDTH	DEPTH					
9.0	T-2A-53360-1S	14.03 (36.0)	17.77 (45.1)	11.52 (29.3)	180 (81.6)	W	0.75-1.25 (1.9-3.2)	NA	18-F
15.0	T-3-53361-1S	18.86 (48.0)	20.30 (51.6)	9.03 (23.0)	250 (113.0)	F ①	NA	NA	18-I
30.0	T-3-53362-4S	25.50 (64.8)	24.39 (61.9)	19.37 (49.2)	325 (147.0)	F ①	NA	WS-A-1	19-E
45.0	T-3-53363-4S	25.50 (64.8)	24.39 (61.9)	19.37 (49.2)	350 (158.8)	F ①	NA	WS-A-1	19-E
75.0	T-3-53364-4S	29.41 (74.7)	28.15 (71.5)	22.37 (56.8)	450 (204.1)	F ①	NA	WS-A-2	19-E
112.5	T-2A-53365-4S	35.47 (90.1)	31.90 (81.0)	26.88 (68.3)	696 (294.8)	F	NA	WS-A-3	19-E
150.0	T-2-53366-4S	41.52 (105.5)	32.90 (84.0)	29.87 (75.9)	978 (412.8)	F	NA	WS-A-4	19-E
225.0	T-2-53367-4S	41.52 (105.5)	32.90 (84.0)	29.87 (75.9)	1200 (544.0)	F	NA	WS-A-4	19-E

① Wall mounting brackets are available for these sizes, refer to page 157.

② Consult factory for wiring diagram.

GROUP D



480 DELTA PRIMARY VOLTS — 208Y/120 SECONDARY VOLTS — MAY BE USED ON A 4 WIRE 480Y/277 VOLT SUPPLY — 3Ø, 60 Hz

KVA	CATALOG NO.	APPROX. DIMENSIONS Inches (Cm.)			APPROX. SHIP WEIGHT Lbs. (Kg.)	TYPE MTG. W – Wall F – Floor	KNOCKOUTS Inches (Cm.)	WEATHER SHIELD P/N	Wiring Diagrams & Design Figures Begin on Page 146
		HEIGHT	WIDTH	DEPTH					
3.0	T-2A-53308-1S	10.38 (26.4)	12.37 (31.4)	7.47 (19.0)	75 (34.0)	W	0.75-1.25 (1.9-3.2)	NA	21-F
6.0	T-2A-53309-1S	11.83 (30.0)	14.17 (36.0)	8.82 (22.4)	140 (63.5)	W	0.75-1.25 (1.9-3.2)	NA	21-F
9.0	T-2A-53310-1S	14.03 (36.0)	17.77 (45.1)	11.52 (29.3)	180 (81.6)	W	0.75-1.25 (1.9-3.2)	NA	21-F
15.0	T-3-53311-1S	18.86 (48.0)	20.30 (51.6)	9.03 (22.9)	250 (113.0)	F ①	NA	NA	21-I
25.0	T-3-53393-3S	25.48 (64.7)	24.39 (61.9)	19.37 (49.2)	290 (132.0)	F ①	NA	WS-A-1	22-E
30.0	T-3-53312-3S	25.50 (64.8)	24.39 (61.9)	19.37 (49.2)	290 (132.0)	F ①	NA	WS-A-1	22-E
37.5	T-3-53394-3S	25.50 (64.8)	24.39 (61.9)	19.37 (49.2)	400 (181.0)	F ①	NA	WS-A-1	22-E
45.0	T-3-53313-3S	25.50 (64.7)	24.39 (61.9)	19.37 (49.2)	400 (181.0)	F ①	NA	WS-A-1	22-E
50.0	T-3-53403-3S	29.41 (74.7)	28.15 (71.5)	22.37 (56.8)	475 (216.0)	F ①	NA	WS-A-2	22-E
75.0	T-3-53314-3S	29.41 (74.7)	28.15 (71.5)	22.37 (56.8)	500 (226.8)	F ①	NA	WS-A-2	22-E
112.5	T-2A-53315-3S	35.47 (90.1)	31.90 (81.0)	26.88 (68.3)	750 (340.0)	F	NA	WS-A-3	22-E
150.0	T-3-53316-3S	41.52 (105.5)	32.90 (83.6)	29.87 (75.9)	970 (440.0)	F	NA	WS-A-4	22-E
225.0	T-3-53317-3S	41.52 (105.5)	32.90 (83.6)	29.87 (75.9)	1200 (544.0)	F	NA	WS-A-4	22-E
300.0	T-3-53318-3S	45.60 (115.8)	39.50 (100.3)	35.50 (90.2)	1550 (703.0)	F	NA	WS-A-5	22-E
500.0	T-2-53319-3S	57.80 (146.8)	45.60 (115.8)	41.50 (105.4)	2480 (1125.0)	F	NA	WS-A-7	22-G
750.0	T-2-53321-3S	62.80 (159.5)	54.00 (137.2)	41.50 (105.4)	3600 (1633.0)	F	NA	WS-A-6	22-G
1000.0	T-1-53322-2S	62.80 (159.5)	54.00 (137.2)	41.50 (105.4)	4300 (1950.0)	F	NA	WS-A-6	80-G

NEW

GROUP DI

480 DELTA PRIMARY VOLTS — SHIELDED UNITS — 208Y/120 SECONDARY VOLTS
MAY BE USED ON A 4 WIRE 480Y/277 VOLT SUPPLY — 3Ø, 60 Hz

KVA	CATALOG NO.	APPROX. DIMENSIONS Inches (Cm.)			APPROX. SHIP WEIGHT Lbs. (Kg.)	TYPE MTG. W – Wall F – Floor	KNOCKOUTS Inches (Cm.)	WEATHER SHIELD P/N	Wiring Diagrams & Design Figures Begin on Page 146
		HEIGHT	WIDTH	DEPTH					
30.0	T-79804-3S	29.59 (75.2)	25.15 (63.9)	22.50 (57.2)	360 (163.3)	F	NA	WS-A-8	22-E
45.0	T-79805-3S	29.59 (75.2)	25.15 (63.9)	22.50 (57.2)	430 (195.0)	F	NA	WS-A-8	22-E
75.0	T-79806-3S	29.59 (75.2)	25.15 (63.9)	22.50 (57.2)	530 (240.4)	F	NA	WS-A-8	22-E
*112.5	T-79807-3	35.90 (91.2)	31.90 (81.0)	26.90 (68.3)	630 (285.8)	F	NA	WS-A-3	67-E

* Non-Shielded Unit

GROUP D2

480 DELTA PRIMARY VOLTS — COPPER WINDINGS — 208Y/120 SECONDARY VOLTS, 150° C RISE — 3Ø, 60 Hz

KVA	CATALOG NO.	APPROX. DIMENSIONS Inches (Cm.)			APPROX. SHIP WEIGHT Lbs. (Kg.)	TYPE MTG. W – Wall F – Floor	KNOCKOUTS Inches (Cm.)	WEATHER SHIELD P/N	Wiring Diagrams & Design Figures Begin on Page 146
		HEIGHT	WIDTH	DEPTH					
15.0	TC-53311-1S*	18.90 (48.0)	20.30 (51.6)	9.00 (22.9)	245 (111.1)	F ①	NA	NA	21-I
30.0	TC-53312-3S	25.50 (64.8)	24.40 (62.0)	19.40 (49.3)	346 (157.0)	F ①	NA	WS-A-1	22-E
45.0	TC-53313-3S	25.50 (64.8)	24.40 (62.0)	19.40 (49.3)	397 (180.1)	F ①	NA	WS-A-1	22-E
75.0	TC-53314-3S	29.41 (74.7)	28.15 (71.5)	22.37 (56.8)	521 (236.3)	F ①	NA	WS-A-2	22-E
112.5	TC-53315-3S	35.47 (90.1)	31.90 (81.0)	26.88 (68.3)	766 (347.5)	F	NA	WS-A-3	22-E
150.0	TC-53316-3S	41.52 (105.5)	32.90 (83.6)	29.87 (75.9)	1026 (465.4)	F	NA	WS-A-4	22-E
225.0	TC-53317-3S	41.52 (105.5)	32.90 (83.6)	29.87 (75.9)	1300 (589.7)	F	NA	WS-A-4	22-E
300.0	TC-1-53318-3S	45.60 (115.8)	39.50 (100.3)	35.50 (90.2)	1551 (703.5)	F	NA	WS-A-5	22-E
500.0	TC-53319-3S	57.80 (146.8)	45.00 (114.3)	41.50 (105.4)	2819 (1278.7)	F	NA	WS-A-7	22-E

* TC-53311-1S Encapsulated, 115° C Rise, 180°C Insulation

① Wall mounting brackets are available for these sizes, refer to page 157.

② Consult factory for wiring diagram.

NEW

GROUP D3



LOW NOISE (minus 3db)

480 DELTA PRIMARY VOLTS — 208Y/120 SECONDARY VOLTS — MAY BE USED ON A 4 WIRE 480Y/277 VOLT SUPPLY — 3Ø, 60 Hz

KVA	CATALOG NO.	APPROX. DIMENSIONS Inches (Cm.)			APPROX. SHIP WEIGHT Lbs. (Kg.)	TYPE MTG. W – Wall F – Floor	KNOCKOUTS Inches (Cm.)	WEATHER SHIELD P/N	Wiring Diagrams & Design Figures Begin on Page 146
		HEIGHT	WIDTH	DEPTH					
30.0	LN3-53312-3S	29.48 (74.9)	28.15 (71.5)	22.37 (56.8)	360 (163.3)	F ①	NA	WS-A-2	22-E
45.0	LN3-53313-3S	29.48 (74.9)	28.15 (71.5)	22.37 (56.8)	417 (189.2)	F ①	NA	WS-A-2	22-E
75.0	LN3-53314-3S	35.47 (90.1)	31.90 (81.0)	26.88 (68.3)	536 (243.1)	F ①	NA	WS-A-3	22-E
112.5	LN3-53315-3S	41.50 (105.4)	32.90 (83.6)	29.90 (75.9)	760 (344.7)	F	NA	WS-A-4	22-E
150.0	LN3-53316-3S	41.50 (105.4)	32.90 (83.6)	29.90 (75.9)	950 (430.9)	F	NA	WS-A-4	22-E
225.0	LN3-53317-3S	41.50 (105.4)	32.90 (83.6)	29.90 (75.9)	1256 (569.7)	F	NA	WS-A-4	22-E

GROUP E

NON-VENTILATED TRANSFORMERS

480 DELTA PRIMARY VOLTS — 208Y/120 SECONDARY VOLTS — MAY BE USED ON A 4 WIRE 480Y/277 VOLT SUPPLY — 3Ø, 60 Hz

KVA	CATALOG NO.	APPROX. DIMENSIONS Inches (Cm.)			APPROX. SHIP WEIGHT Lbs. (Kg.)	TYPE MTG. W – Wall F – Floor	KNOCKOUTS Inches (Cm.)	WEATHER SHIELD P/N	Wiring Diagrams & Design Figures Begin on Page 146
		HEIGHT	WIDTH	DEPTH					
30.0	TE-2-53312-3S	29.41 (74.7)	28.15 (71.5)	22.37 (56.8)	425 (193.0)	F ①	NA	NA	22-H
45.0	TE-2-53313-3S	35.47 (90.1)	31.90 (81.0)	26.90 (68.3)	575 (261.0)	F	NA	NA	22-H
75.0	TE-2-53314-3S	41.52 (105.5)	32.90 (83.6)	29.87 (75.9)	965 (438.0)	F	NA	NA	22-H
112.5	TE-3-53315-3S	45.60 (115.8)	39.50 (100.3)	35.50 (90.2)	1450 (658.0)	F	NA	NA	22-H

GROUP F

ENCAPSULATED TRANSFORMERS, 115° C RISE

480 DELTA PRIMARY VOLTS — 208Y/120 SECONDARY VOLTS — 3Ø, 60 Hz

KVA	CATALOG NO.	APPROX. DIMENSIONS Inches (Cm.)			APPROX. SHIP WEIGHT Lbs. (Kg.)	TYPE MTG. W – Wall F – Floor	KNOCKOUTS Inches (Cm.)	WEATHER SHIELD P/N	Wiring Diagrams & Design Figures Begin on Page 146
		HEIGHT	WIDTH	DEPTH					
30.0	T-3-79312-3S	24.81 (63.0)	27.13 (68.9)	11.14 (28.3)	613 (278.1)	F	NA	NA	22-I
45.0	T-3-79313-3S	25.31 (64.3)	30.18 (76.7)	12.76 (32.4)	780 (354.0)	F	NA	NA	22-I
75.0	T-3-79314-3S	26.82 (68.1)	34.68 (88.1)	15.25 (38.7)	1126 (511.0)	F	NA	NA	22-I

NEW

GROUP F – 316 SS

316 STAINLESS STEEL

ENCAPSULATED TRANSFORMERS, 115° C RISE

480 DELTA PRIMARY VOLTS — 208Y/120 SECONDARY VOLTS — 3Ø, 60 Hz

KVA	CATALOG NO.	APPROX. DIMENSIONS Inches (Cm.)			APPROX. SHIP WEIGHT Lbs. (Kg.)	TYPE MTG. W – Wall F – Floor	KNOCKOUTS Inches (Cm.)	WEATHER SHIELD P/N	Wiring Diagrams & Design Figures Begin on Page 146
		HEIGHT	WIDTH	DEPTH					
3.0	T-2A-53308-SS	10.38 (26.4)	12.37 (31.4)	7.47 (19.0)	75 (34.0)	W	NA	NA	21-F
6.0	T-2A-53309-SS	11.83 (30.0)	14.17 (36.0)	8.82 (22.4)	140 (63.5)	W	NA	NA	21-F
9.0	T-2A-53310-SS	14.03 (35.6)	17.77 (45.1)	11.52 (29.3)	180 (81.6)	W	NA	NA	21-F
15.0	T-3-53311-SS	18.86 (47.9)	20.30 (51.6)	9.03 (22.9)	250 (113.0)	F	NA	NA	21-I
30.0	T-3-79312-SS	24.81 (63.0)	27.13 (68.9)	11.14 (28.3)	613 (278.1)	F	NA	NA	22-I
45.0	T-3-79313-SS	25.31 (64.3)	30.18 (76.7)	12.76 (32.4)	780 (354.0)	F	NA	NA	22-I
75.0	T-3-79314-SS	26.82 (68.1)	34.68 (88.1)	15.25 (38.7)	1126 (511.0)	F	NA	NA	22-I

① Wall mounting brackets are available for these sizes, refer to page 157.

GROUP G



480 DELTA PRIMARY VOLTS — 240 DELTA / 120 TAP SECONDARY VOLTS
MAY BE USED ON A 4 WIRE 480Y/277 VOLT SUPPLY — 3Ø, 60 Hz

KVA ②	CATALOG NO.	APPROX. DIMENSIONS Inches (Cm.)			APPROX. SHIP WEIGHT Lbs. (Kg.)	TYPE MTG. W – Wall F – Floor	KNOCKOUTS Inches (Cm.)	WEATHER SHIELD P/N	Wiring Diagrams & Design Figures Begin on Page 146
		HEIGHT	WIDTH	DEPTH					
3.0	T-2A-53328-1S	10.38 (26.4)	12.37 (31.4)	7.47 (19.0)	75 (34.0)	W	0.75-1.25 (1.9-3.2)	NA	25-F
6.0	T-2A-53329-1S	11.83 (30.0)	14.17 (36.0)	8.82 (22.4)	140 (63.5)	W	0.75-1.25 (1.9-3.2)	NA	25-F
9.0	T-2A-53340-1S	14.03 (36.0)	17.77 (45.1)	11.52 (29.3)	180 (81.6)	W	0.75-1.25 (1.9-3.2)	NA	25-F
15.0	T-3-53341-1S	18.86 (47.9)	20.30 (51.6)	9.03 (22.9)	250 (113.0)	F ①	NA	NA	25-I
30.0	T-3-53342-3S	25.50 (64.8)	24.39 (61.9)	19.37 (49.2)	325 (147.0)	F ①	NA	WS-A-1	26-E
45.0	T-3-53343-3S	25.50 (64.8)	24.39 (61.9)	19.37 (49.2)	400 (181.0)	F ①	NA	WS-A-1	26-E
75.0	T-3-53344-3S	29.41 (74.7)	28.15 (71.5)	22.37 (56.8)	500 (226.8)	F ①	NA	WS-A-2	26-E
112.5	T-2A-53345-3S	35.47 (91.2)	31.90 (81.0)	26.88 (68.3)	750 (340.0)	F	NA	WS-A-3	26-E
150.0	T-3-53346-3S	41.52 (105.5)	32.90 (83.6)	29.87 (75.9)	1125 (510.0)	F	NA	WS-A-4	26-E
225.0	T-3-53347-3S	41.52 (105.5)	32.90 (83.6)	29.87 (75.9)	1200 (544.0)	F	NA	WS-A-4	26-E
300.0	T-3-53348-3S	45.60 (115.8)	39.50 (100.3)	35.50 (90.2)	1550 (703.0)	F	NA	WS-A-5	26-G
500.0	T-1-53349-3S	62.00 (157.5)	54.00 (137.2)	42.00 (106.7)	2675 (1213.0)	F	NA	WS-B-3	27-G
750.0	T-2-53350-3S	62.80 (159.5)	54.00 (137.2)	41.50 (105.4)	3408 (1545.8)	F	NA	WS-A-6	26-G

NEW

GROUP GI

480 DELTA PRIMARY VOLTS — SHIELDED UNITS — 240 DELTA / 120 TAP SECONDARY VOLTS
MAY BE USED ON A 4 WIRE 480Y/277 VOLT SUPPLY — 3Ø, 60 Hz

KVA	CATALOG NO.	APPROX. DIMENSIONS Inches (Cm.)			APPROX. SHIP WEIGHT Lbs. (Kg.)	TYPE MTG. W – Wall F – Floor	KNOCKOUTS Inches (Cm.)	WEATHER SHIELD P/N	Wiring Diagrams & Design Figures Begin on Page 146
		HEIGHT	WIDTH	DEPTH					
30.0	T-79844-3S	29.59 (75.2)	25.15 (63.9)	22.50 (57.2)	365 (165.6)	F	NA	WS-A-8	26-E
45.0	T-79845-3S	29.59 (75.2)	25.15 (63.9)	22.50 (57.2)	460 (208.7)	F	NA	WS-A-8	26-E
75.0	T-79846-3S	29.59 (75.2)	25.15 (63.9)	22.50 (57.2)	530 (240.4)	F	NA	WS-A-8	26-E
*112.5	T-79847-3	35.90 (91.2)	31.90 (81.0)	26.90 (68.3)	630 (285.8)	F	NA	WS-A-3	68-E

* Non-Shielded Unit

NEW

GROUP G2

LOW NOISE (minus 3 db)

480 DELTA PRIMARY VOLTS — 240 DELTA / 120 TAP SECONDARY VOLTS
MAY BE USED ON A 4 WIRE 480Y/277 VOLT SUPPLY — 3Ø, 60 Hz

KVA	CATALOG NO.	APPROX. DIMENSIONS Inches (Cm.)			APPROX. SHIP WEIGHT Lbs. (Kg.)	TYPE MTG. W – Wall F – Floor	KNOCKOUTS Inches (Cm.)	WEATHER SHIELD P/N	Wiring Diagrams & Design Figures Begin on Page 146
		HEIGHT	WIDTH	DEPTH					
30.0	LN3-53342-3S	29.48 (74.9)	28.15 (71.5)	22.37 (56.8)	360 (163.3)	F ①	NA	WS-A-2	26-E
45.0	LN3-53343-3S	29.48 (74.9)	28.15 (71.5)	22.37 (56.8)	417 (189.2)	F ①	NA	WS-A-2	26-E
75.0	LN3-53344-3S	35.47 (90.1)	31.90 (81.0)	26.88 (68.3)	536 (243.1)	F ①	NA	WS-A-3	26-E
112.5	LN3-53345-3S	41.50 (105.4)	32.90 (83.6)	29.90 (75.9)	800 (362.9)	F	NA	WS-A-4	26-E
150.0	LN3-53346-3S	41.50 (105.4)	32.90 (83.6)	29.90 (75.9)	950 (430.9)	F	NA	WS-A-4	26-E
225.0	LN3-53347-3S	41.50 (105.4)	32.90 (83.6)	29.90 (75.9)	1256 (569.7)	F	NA	WS-A-4	26-E

① Wall mounting brackets are available for these sizes, refer to page 157.

② 3 KVA through 500 KVA provided with 120V lighting tap limited to 5% of nameplate rating.



GROUP H

NON-VENTILATED TRANSFORMERS

480 DELTA PRIMARY VOLTS — 240 DELTA/ 120 TAP SECONDARY VOLTS

MAY BE USED ON A 4 WIRE 480Y/277 VOLT SUPPLY — 3Ø, 60 Hz

KVA	CATALOG NO.	APPROX. DIMENSIONS Inches (Cm.)			APPROX. SHIP WEIGHT Lbs. (Kg.)	TYPE MTG. W – Wall F – Floor	KNOCKOUTS Inches (Cm.)	WEATHER SHIELD P/N	Wiring Diagrams & Design Figures Begin on Page 146
		HEIGHT	WIDTH	DEPTH					
30.0	TE-3-53342-3S	29.41 (74.7)	28.15 (71.5)	22.37 (56.8)	600 (272.0)	F ①	NA	NA	26-H
45.0	TE-2-53343-3S	35.47 (90.1)	31.90 (81.0)	26.88 (68.3)	750 (340.0)	F	NA	NA	26-H
75.0	TE-2-53344-3S	41.52 (105.5)	32.90 (83.6)	29.87 (75.9)	1125 (510.0)	F	NA	NA	26-H
112.5	TE-3-53345-3S	45.59 (115.8)	39.50 (100.3)	35.50 (90.2)	1150 (522.0)	F	NA	NA	26-H

GROUP I

480 DELTA PRIMARY VOLTS — 480Y/277 SECONDARY VOLTS

MAY BE USED ON A 4 WIRE 480Y/277 VOLT SUPPLY — 3Ø, 60 Hz

KVA	CATALOG NO.	APPROX. DIMENSIONS Inches (Cm.)			APPROX. SHIP WEIGHT Lbs. (Kg.)	TYPE MTG. W – Wall F – Floor	KNOCKOUTS Inches (Cm.)	WEATHER SHIELD P/N	Wiring Diagrams & Design Figures Begin on Page 146
		HEIGHT	WIDTH	DEPTH					
15.0	T-3-3500015-3S	18.86 (48.0)	20.30 (51.6)	9.03 (22.9)	250 (113.0)	F ①	NA	NA	31-I
30.0	T-2A-3500030-3S	25.50 (64.8)	24.39 (61.9)	19.37 (49.2)	325 (147.0)	F ①	NA	WS-A-1	31-E
45.0	T-2A-3500045-3S	25.50 (64.8)	24.39 (61.9)	19.37 (49.2)	400 (181.0)	F ①	NA	WS-A-1	31-E
75.0	T-3-3500075-3S	29.41 (74.7)	28.15 (71.5)	22.37 (56.8)	600 (272.0)	F ①	NA	WS-A-2	31-E
112.5	T-2A-3500112-3S	35.47 (90.1)	31.90 (81.0)	26.88 (68.3)	710 (322.0)	F	NA	WS-A-3	31-E
150.0	T-2A-3500150-3S	41.52 (105.5)	32.90 (83.6)	29.87 (75.9)	1155 (524.0)	F	NA	WS-A-4	31-E
225.0	T-2A-3500225-3S	41.52 (105.5)	32.90 (83.6)	29.87 (75.9)	1210 (548.8)	F	NA	WS-A-4	31-E
300.0	T-3-3500300-3S	45.60 (115.8)	39.50 (100.3)	35.50 (90.2)	1600 (726.0)	F	NA	WS-A-5	31-E
500.0	TTBD-3500500-3S	62.00 (157.5)	54.00 (137.2)	42.00 (106.7)	2620 (1188.0)	F	NA	WS-B-3	32-G

GROUP J

600 DELTA PRIMARY VOLTS — 208Y/120 SECONDARY VOLTS — 3Ø, 60 Hz

KVA	CATALOG NO.	APPROX. DIMENSIONS Inches (Cm.)			APPROX. SHIP WEIGHT Lbs. (Kg.)	TYPE MTG. W – Wall F – Floor	KNOCKOUTS Inches (Cm.)	WEATHER SHIELD P/N	Wiring Diagrams & Design Figures Begin on Page 146
		HEIGHT	WIDTH	DEPTH					
3.0	T-2A-79330-1S	10.38 (26.4)	12.37 (31.4)	7.47 (19.0)	75 (34.0)	W	0.75-1.25 (1.9-3.2)	NA	28-F
6.0	T-2A-79331-1S	11.83 (30.0)	14.17 (36.0)	8.82 (22.4)	140 (63.5)	W	0.75-1.25 (1.9-3.2)	NA	28-F
9.0	T-2A-79332-1S	14.03 (36.0)	17.77 (45.1)	11.52 (29.3)	180 (81.6)	W	0.75-1.25 (1.9-3.2)	NA	28-F
15.0	T-3-79333-1S	18.86 (47.9)	20.30 (51.6)	9.03 (22.9)	250 (113.0)	F ①	NA	NA	28-I
30.0	T-13102-3S	25.50 (64.8)	24.39 (61.9)	19.37 (49.2)	325 (147.0)	F ①	NA	WS-A-1	29-E
45.0	T-13103-3S	25.50 (64.8)	24.39 (61.9)	19.37 (49.2)	400 (181.0)	F ①	NA	WS-A-1	29-E
75.0	T-13104-3S	29.41 (74.7)	28.15 (71.5)	22.37 (56.8)	600 (272.0)	F ①	NA	WS-A-2	29-E

GROUP K

ENCAPSULATED TRANSFORMERS, 115° C RISE

600 DELTA PRIMARY VOLTS — 208Y/120 SECONDARY VOLTS — 3Ø, 60 Hz

KVA	CATALOG NO.	APPROX. DIMENSIONS Inches (Cm.)			APPROX. SHIP WEIGHT Lbs. (Kg.)	TYPE MTG. W – Wall F – Floor	KNOCKOUTS Inches (Cm.)	WEATHER SHIELD P/N	Wiring Diagrams & Design Figures Begin on Page 146
		HEIGHT	WIDTH	DEPTH					
30.0	T-3-79334-3S	24.81 (63.0)	27.13 (68.9)	11.14 (28.3)	613 (278.1)	F	NA	NA	29-I
45.0	T-3-79335-3S	25.31 (64.3)	30.18 (76.7)	12.76 (32.4)	780 (354.0)	F	NA	NA	29-I
75.0	T-3-79336-3S	26.82 (68.1)	34.68 (88.1)	15.25 (38.7)	1126 (511.0)	F	NA	NA	29-I

① Wall mounting brackets are available for these sizes, refer to page 157.

GROUP M



600 DELTA PRIMARY VOLTS — 480Y/277 SECONDARY VOLTS — 3Ø, 60 Hz

KVA	CATALOG NO.	APPROX. DIMENSIONS Inches (Cm.)			APPROX. SHIP WEIGHT Lbs. (Kg.)	TYPE MTG. W – Wall F – Floor	KNOCKOUTS Inches (Cm.)	WEATHER SHIELD P/N	Wiring Diagrams & Design Figures Begin on Page 146
		HEIGHT	WIDTH	DEPTH					
3.0	T-2A-79516-1S	10.38 (26.4)	12.37 (31.4)	7.47 (19.0)	75 (34.0)	W	0.75-1.25 (1.9-3.2)	NA	55-F
6.0	T-2A-79517-1S	11.83 (30.0)	14.17 (36.0)	8.82 (22.4)	140 (63.5)	W	0.75-1.25 (1.9-3.2)	NA	55-F
9.0	T-2A-79518-1S	14.03 (38.8)	17.77 (45.1)	11.52 (29.3)	180 (81.6)	W	0.75-1.25 (1.9-3.2)	NA	55-F
15.0	T-3-79519-1S	18.86 (47.9)	20.30 (51.6)	9.03 (22.9)	250 (113.0)	F ①	NA	NA	55-I
30.0	T-2A-79520-3S	29.41 (74.7)	28.15 (71.5)	22.37 (56.8)	400 (181.0)	F ①	NA	WS-A-2	51-E
45.0	T-2A-79521-3S	29.41 (74.7)	28.15 (71.5)	22.37 (56.8)	425 (193.0)	F ①	NA	WS-A-2	51-E
75.0	T-3-79522-3S	29.41 (74.7)	28.15 (71.5)	22.37 (56.8)	700 (318.0)	F ①	NA	WS-A-2	51-E
112.5	T-2A-79523-3S	35.47 (90.1)	31.90 (81.0)	26.88 (68.3)	750 (340.0)	F	NA	WS-A-3	51-E
150.0	T-2-79524-3S	41.52 (105.5)	32.90 (83.6)	29.87 (75.9)	1125 (510.0)	F	NA	WS-A-4	51-E

GROUP O

208 DELTA PRIMARY VOLTS — 208Y/120 SECONDARY VOLTS — 3Ø, 60 Hz

KVA	CATALOG NO.	APPROX. DIMENSIONS Inches (Cm.)			APPROX. SHIP WEIGHT Lbs. (Kg.)	TYPE MTG. W – Wall F – Floor	KNOCKOUTS Inches (Cm.)	WEATHER SHIELD P/N	Wiring Diagrams & Design Figures Begin on Page 146
		HEIGHT	WIDTH	DEPTH					
3.0	T-2A-79268-1S	10.38 (26.4)	12.37 (31.4)	7.47 (19.0)	75 (34.0)	W	0.75-1.25 (1.9-3.2)	NA	60-F
6.0	T-2A-79269-1S	11.83 (30.0)	14.17 (36.0)	8.82 (22.4)	140 (63.5)	W	0.75-1.25 (1.9-3.2)	NA	60-F
9.0	T-2A-79270-1S	14.03 (36.0)	17.77 (45.1)	11.52 (29.3)	180 (81.6)	W	0.75-1.25 (1.9-3.2)	NA	60-F
15.0	T-3-79271-1S	18.86 (48.0)	20.30 (51.6)	9.03 (22.9)	245 (111.0)	F ①	NA	NA	60-I
30.0	T-2-79272-4S	25.50 (64.8)	24.39 (61.9)	19.37 (49.2)	300 (136.0)	F ①	NA	WS-A-1	61-E
45.0	T-2-79273-4S	25.48 (64.7)	24.39 (61.9)	19.37 (49.2)	365 (166.0)	F ①	NA	WS-A-1	61-E
75.0	T-2-79274-4S	29.41 (74.7)	28.15 (71.5)	22.37 (56.8)	500 (227.0)	F ①	NA	WS-A-2	61-E
112.5	T-2-79275-4S	35.47 (90.1)	31.90 (81.0)	26.88 (68.3)	700 (318.0)	F	NA	WS-A-3	61-E
150.0	T-2-79276-4S	41.52 (105.5)	32.90 (83.6)	29.87 (75.9)	970 (440.0)	F	NA	WS-A-4	61-E
225.0	T-2-79277-4S	41.52 (105.5)	32.90 (83.6)	29.87 (75.9)	1200 (544.0)	F	NA	WS-A-4	61-E

GROUP P

600 DELTA PRIMARY VOLTS — 240 DELTA/120 TAP SECONDARY VOLTS — 3Ø, 60 Hz

KVA	CATALOG NO.	APPROX. DIMENSIONS Inches (Cm.)			APPROX. SHIP WEIGHT Lbs. (Kg.)	TYPE MTG. W – Wall F – Floor	KNOCKOUTS Inches (Cm.)	WEATHER SHIELD P/N	Wiring Diagrams & Design Figures Begin on Page 146
		HEIGHT	WIDTH	DEPTH					
30.0	T-13142-3S	25.50 (64.8)	24.39 (61.9)	19.37 (49.2)	299 (135.6)	F ①	NA	WS-A-1	69-E
45.0	T-13143-3S	25.48 (64.7)	24.39 (61.9)	19.37 (49.2)	353 (160.1)	F ①	NA	WS-A-1	69-E
75.0	T-13144-3S	29.41 (74.7)	28.15 (71.5)	22.37 (56.8)	463 (210.0)	F ①	NA	WS-A-2	69-E

GROUP Q

240 DELTA PRIMARY VOLTS — 480Y/277 SECONDARY VOLTS — 3Ø, 60 Hz

KVA	CATALOG NO.	APPROX. DIMENSIONS Inches (Cm.)			APPROX. SHIP WEIGHT Lbs. (Kg.)	TYPE MTG. W – Wall F – Floor	KNOCKOUTS Inches (Cm.)	WEATHER SHIELD P/N	Wiring Diagrams & Design Figures Begin on Page 146
		HEIGHT	WIDTH	DEPTH					
15.0	T-3-79693-1S	18.86 (48.0)	20.30 (51.6)	9.03 (22.9)	245 (111.1)	F ①	NA	NA	70-I
30.0	T-2-79694-4S	25.50 (64.8)	24.39 (61.9)	19.37 (49.2)	330 (149.7)	F ①	NA	WS-A-1	71-E
45.0	T-2-79695-4S	25.48 (64.7)	24.39 (61.9)	19.37 (49.2)	380 (172.4)	F ①	NA	WS-A-1	71-E
75.0	T-2-79696-4S	29.41 (74.7)	28.15 (71.5)	22.37 (56.8)	455 (206.4)	F ①	NA	WS-A-2	71-E
112.5	T-2-79697-4S	35.47 (90.1)	31.90 (81.0)	26.88 (68.3)	687 (311.6)	F	NA	WS-A-3	71-E
150.0	T-2-79698-4S	41.52 (105.5)	32.90 (83.6)	29.87 (75.9)	973 (441.3)	F	NA	WS-A-4	71-E

① Wall mounting brackets are available for these sizes, refer to page 157.

GROUP R



380 DELTA PRIMARY VOLTS — 208Y/120 SECONDARY VOLTS — 3Ø, 60 Hz

KVA	CATALOG NO.	APPROX. DIMENSIONS Inches (Cm.)			APPROX. SHIP WEIGHT Lbs. (Kg.)	TYPE MTG. W – Wall F – Floor	KNOCKOUTS Inches (Cm.)	WEATHER SHIELD P/N	Wiring Diagrams & Design Figures Begin on Page 146
		HEIGHT	WIDTH	DEPTH					
3.0	T-2A-79708-4S	10.38 (26.4)	12.37 (31.4)	7.47 (19.0)	75 (34.0)	W	0.75-1.25 (1.9-3.2)	NA	33-F
6.0	T-2A-79709-4S	11.83 (30.0)	14.17 (36.0)	8.82 (22.4)	120 (54.4)	W	0.75-1.25 (1.9-3.2)	NA	33-F
9.0	T-2A-79710-4S	14.03 (36.0)	17.77 (45.1)	11.52 (29.3)	175 (79.4)	W	0.75-1.25 (1.9-3.2)	NA	33-F
15.0	T-3-79711-4S	18.86 (48.0)	20.30 (51.6)	9.03 (22.9)	245 (111.1)	F ①	NA	NA	33-I
30.0	T-3-79712-3S	25.50 (64.8)	24.39 (61.9)	19.37 (49.2)	295 (133.8)	F ①	NA	WS-A-1	72-E
45.0	T-3-79713-3S	25.48 (64.7)	24.39 (61.9)	19.37 (49.2)	353 (160.1)	F ①	NA	WS-A-1	72-E
75.0	T-3-79714-3S	29.41 (74.7)	28.15 (71.5)	22.37 (56.8)	457 (207.3)	F ①	NA	WS-A-2	72-E
112.5	T-2A-79715-3S	35.47 (90.1)	31.90 (81.0)	26.88 (68.3)	679 (308.0)	F	NA	WS-A-3	72-E

GROUP T

380 DELTA PRIMARY VOLTS — 220Y/127 SECONDARY VOLTS — 3Ø, 50/60 Hz

KVA	CATALOG NO.	APPROX. DIMENSIONS Inches (Cm.)			APPROX. SHIP WEIGHT Lbs. (Kg.)	TYPE MTG. W – Wall F – Floor	KNOCKOUTS Inches (Cm.)	WEATHER SHIELD P/N	Wiring Diagrams & Design Figures Begin on Page 146
		HEIGHT	WIDTH	DEPTH					
15.0	T-3-79551-1S	20.80 (52.8)	20.90 (53.1)	10.20 (25.9)	435 (197.3)	F	NA	NA	24-I
30.0	T-2A-79552-3S	25.50 (64.8)	24.40 (62.0)	19.40 (49.3)	365 (165.6)	F ①	NA	WS-A-1	20-E
45.0	T-2A-79553-3S	29.41 (74.7)	28.15 (71.5)	22.37 (56.8)	468 (212.3)	F ①	NA	WS-A-2	20-E
75.0	T-2A-79554-3S	35.47 (90.1)	31.90 (80.0)	26.88 (68.3)	693 (314.3)	F	NA	WS-A-3	20-E
112.5	T-2A-79555-3S	41.52 (105.5)	32.90 (83.6)	29.87 (75.9)	970 (440.0)	F	NA	WS-A-4	20-E
150.0	T-2-79556-3S	41.52 (105.5)	32.90 (83.6)	29.87 (75.9)	1100 (499.0)	F	NA	WS-A-4	20-E
225.0	T-3-79557-3S	45.60 (115.8)	39.50 (100.3)	35.50 (90.2)	1600 (725.7)	F	NA	WS-A-5	20-E

GROUP U

440 DELTA PRIMARY VOLTS — 220Y/127 SECONDARY VOLTS — 3Ø, 50/60 Hz

KVA	CATALOG NO.	APPROX. DIMENSIONS Inches (Cm.)			APPROX. SHIP WEIGHT Lbs. (Kg.)	TYPE MTG. W – Wall F – Floor	KNOCKOUTS Inches (Cm.)	WEATHER SHIELD P/N	Wiring Diagrams & Design Figures Begin on Page 146
		HEIGHT	WIDTH	DEPTH					
10.0	TF-22010-5S	18.90 (48.0)	20.30 (51.6)	9.00 (22.9)	245 (111.1)	F ①	NA	NA	73-I
15.0	TF-22015-5S	25.50 (64.8)	24.40 (62.0)	19.40 (49.3)	291 (132.0)	F ①	NA	WS-A-1	73-E
25.0	TF-22025-5S	25.50 (64.8)	24.40 (62.0)	19.40 (49.3)	375 (170.1)	F ①	NA	WS-A-1	73-E
50.0	TF-22050-5S	29.41 (74.7)	28.15 (71.5)	22.37 (56.8)	437 (198.2)	F ①	NA	WS-A-2	73-E
100.0	TF-220100-5S	41.52 (105.5)	32.90 (83.6)	29.87 (75.9)	725 (328.9)	F	NA	WS-A-4	73-E
200.0	TF-220200-5S	45.60 (115.8)	39.50 (100.3)	35.50 (90.2)	1025 (464.9)	F	NA	WS-A-5	73-E
250.0	TF-220250-5S	45.60 (115.8)	39.50 (100.3)	35.50 (90.2)	1600 (725.8)	F	NA	WS-A-5	73-E
300.0	TF-220300-5S	57.84 (146.9)	45.50 (115.6)	41.50 (105.4)	1700 (771.12)	F	NA	WS-A-7	73-G
500.0	TF-220500-5S	62.80 (159.5)	54.00 (137.2)	41.50 (105.4)	2418 (1096.8)	F	NA	WS-A-6	73-G

① Wall mounting brackets are available for these sizes, refer to page 157.

NEW

GROUP V



190/200/208/220/240 DELTA PRIMARY VOLTS — 400Y/231 SECONDARY VOLTS — 3Ø, 60 Hz

KVA	CATALOG NO.	APPROX. DIMENSIONS Inches (Cm.)			APPROX. SHIP WEIGHT Lbs. (Kg.)	TYPE MTG. W – Wall F – Floor	KNOCKOUTS Inches (Cm.)	WEATHER SHIELD P/N	Wiring Diagrams & Design Figures Begin on Page 146
		HEIGHT	WIDTH	DEPTH					
15.0	T-3-79083-S	18.86 (47.9)	20.30 (51.6)	9.03 (22.9)	300 (136.1)	F ①	NA	NA	75-I
20.0	T-2A-79084-S	29.90 (75.9)	28.15 (71.5)	22.37 (56.8)	500 (226.8)	F ⑤	NA	WS-A-2	74-E
30.0	T-2A-79085-S	29.90 (75.9)	28.15 (71.5)	22.37 (56.8)	511 (231.8)	F ⑤	NA	WS-A-2	74-E
45.0	T-2A-79087-S	25.50 (64.8)	24.39 (62.0)	19.37 (49.2)	540 (244.9)	F ⑤	NA	WS-A-1	74-E
75.0	T-2A-79088-S	35.90 (91.2)	31.90 (81.0)	26.88 (68.3)	703 (318.9)	F	NA	WS-A-3	74-E

NEW

GROUP W

400 DELTA PRIMARY VOLTS — 240 DELTA/120 SECONDARY VOLTS — 3Ø, 60 Hz

KVA	CATALOG NO.	APPROX. DIMENSIONS Inches (Cm.)			APPROX. SHIP WEIGHT Lbs. (Kg.)	TYPE MTG. W – Wall F – Floor	KNOCKOUTS Inches (Cm.)	WEATHER SHIELD P/N	Wiring Diagrams & Design Figures Begin on Page 146
		HEIGHT	WIDTH	DEPTH					
15.0	T-3-79068-1S	18.86 (47.9)	20.30 (51.6)	9.03 (22.9)	250 (113.4)	F ①	NA	N/A	76-I
30.0	T-3-79069-3S	25.48 (64.7)	24.39 (62.0)	19.37 (49.2)	300 (136.1)	F ⑤	NA	WS-A-1	77-E
45.0	T-3-79070-3S	25.48 (64.7)	24.39 (62.0)	19.37 (49.2)	365 (165.6)	F ⑤	NA	WS-A-1	77-E
75.0	T-3-79071-3S	29.40 (74.7)	28.15 (71.5)	22.37 (56.8)	475 (215.5)	F ⑤	NA	WS-A-2	77-E

AUTO-TRANSFORMERS^②

600 PRIMARY VOLTS — 480 SECONDARY VOLTS — 3Ø, 60 Hz

480 PRIMARY VOLTS — 380 SECONDARY VOLTS — 3Ø, 50/60 Hz ALTERNATE RATING

KVA	600 Pri.	480 Pri.	CATALOG NO.	APPROX. DIMENSIONS Inches (Cm.)			APPROX. SHIP WEIGHT Lbs. (Kg.)	TYPE MTG. W – Wall F – Floor	KNOCKOUTS Inches (Cm.)	WEATHER SHIELD P/N	Wiring Diagrams & Design Figures Begin on Page 146
				HEIGHT	WIDTH	DEPTH					
15.0	12.0	12.0	T-2-52703-1③	15.21 (38.6)	19.25 (48.9)	7.37 (18.7)	104 (47.2)	W	NA	NA	56-F
30.0	24.0	24.0	T-2-52705-1③	15.21 (38.6)	19.25 (48.9)	7.37 (18.7)	152 (68.9)	W	NA	NA	56-F
45.0	36.0	36.0	T-2-52707-1③	15.21 (38.6)	19.25 (48.9)	7.37 (18.7)	156 (70.8)	W	NA	NA	56-F
75.0	60.0	60.0	T-3-52710-1③	18.86 (47.9)	20.30 (51.6)	9.03 (22.9)	300 (136.1)	F ①	NA	NA	56-I
112.5	90.0	90.0	T-2A-52712-1④	25.50 (64.8)	24.40 (62.0)	19.40 (49.3)	325 (147.0)	F ⑤	NA	WS-A-1	57-E
150.0	120.0	120.0	T-2A-52713-1④	25.50 (64.8)	24.40 (62.0)	19.40 (49.3)	350 (158.8)	F ⑤	NA	WS-A-1	57-E
225.0	180.0	180.0	T-2A-52715-1④	29.41 (74.7)	28.15 (71.5)	22.37 (56.8)	600 (272.0)	F ⑤	NA	WS-A-2	57-E
300.0	240.0	240.0	T-2A-52717-1④	29.41 (74.7)	28.15 (71.5)	22.37 (56.8)	650 (294.8)	F ⑤	NA	WS-A-2	57-E
450.0	360.0	360.0	T-2A-52718-1④	35.47 (90.1)	31.90 (81.0)	26.88 (68.3)	750 (340.0)	F	NA	WS-A-3	57-E
500.0	400.0	400.0	T-2A-52719-1④	35.47 (90.1)	31.90 (81.0)	26.88 (68.3)	790 (358.3)	F	NA	WS-A-3	57-E

① Wall mounting brackets use PL-79911.

② If used on unbalanced loads, these units should only be used on a 4 wire system with the supply neutral connected to the transformer. If used on balanced loads, such as motor loads, then they may be used on a 3 wire system without a neutral or 4th wire.

③ These units are encapsulated with a 115° C temperature rise.

④ These units are ventilated with 150° C temperature rise.

⑤ Wall mounting brackets use PL-79912.

E A A

U

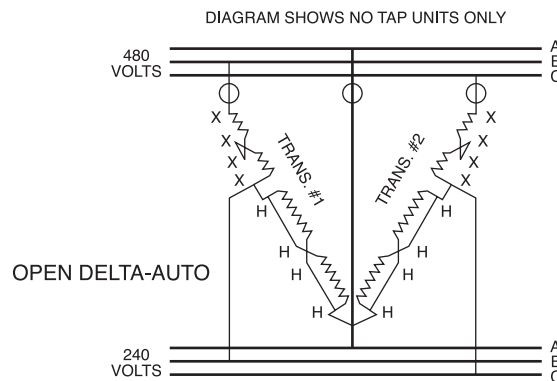


THREE PHASE

480 PRIMARY (open delta) VOLTS ---

240 SECONDARY (open delta) VOLTS --- 3Ø, 60 Hz

KVA ①	Qty. ②	Catalog No. ③	Primary Full Load Amps	Secondary Full Load Amps	Max. Size Fuse or Breaker
3.0	2	T-2-53010-S	3.60	7.20	10
5.0	2	T-2-53011-S	6.00	12.00	10
6.0	2	T-2-53012-S	7.20	14.40	15
10.0	2	T-2-53013-4S	12.00	24.00	15
17.0	2	T-2-53014-4S	20.50	40.80	30
26.0	2	T-2-53515-3S	31.50	63.00	40
34.0	2	T-2-53516-3S	41.00	81.60	60
52.0	2	T-2-53517-3S	63.00	125.00	80
86.0	2	T-2-53518-3S	104.00	206.30	150
130.5	2	T-2-53019-3S	157.00	314.00	200
173.0	2	T-2-53020-3S	209.00	418.00	300
259.0	2	T-2-53021-3S	312.00	623.00	400
346.0	2	T-2A-53022-3S	417.00	834.00	600
578.0	2	T-1-53023-3S	696.00	1392.00	1000
865.0	2	T-1-53024-3S	1041.00	2082.00	1600

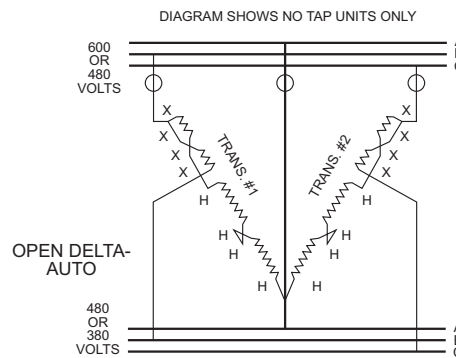


⑤ = Fuse Location NEC 450-4, 1990.

600 PRIMARY VOLTS — 480 SECONDARY (open delta) VOLTS — 3Ø, 60 Hz

480 PRIMARY VOLTS — 380 SECONDARY (open delta) VOLTS — 3Ø, 50/60 Hz

Pri. 600V Sec. 480V KVA ①	Pri. Amps	Sec. Amps	Pri. 480V Sec. 380V KVA ①	Pri. Amps	Sec. Amps	Qty ②	Catalog No. ③	Max. Size Fuse or Breaker
8.0	7.70	9.60	6.5	7.80	9.60	2	T-2-53010-S	15
12.0	11.55	14.40	9.5	11.55	14.40	2	T-2-53011-S	15
17.0	16.33	20.41	13.5	16.33	20.41	2	T-2-53012-S	25
25.0	24.06	30.01	20.0	24.06	30.01	2	T-2-53013-4S	30
43.0	41.38	51.70	34.0	41.38	51.70	2	T-2-53014-4S	60
64.0	61.59	77.00	51.0	61.59	77.00	2	T-2-53515-3S	80
86.0	82.76	103.44	68.0	82.76	103.44	2	T-2-53516-3S	110
129.0	124.13	155.20	103.0	124.13	155.20	2	T-2-53517-3S	175
216.0	207.85	259.80	172.0	207.85	259.80	2	T-2-53518-3S	300
324.0	311.78	389.70	259.0	311.78	389.70	2	T-2-53019-3S	400
433.0	416.67	520.83	346.0	416.67	520.83	2	T-2-53020-3S	600
650.0	625.00	781.00	519.0	625.00	781.00	2	T-2-53021-3S	800
865.0	833.00	1040.00	692.0	833.00	1051.00	2	T-2A-53022-3S	1200
1445.0	1391.00	1738.00	1156.0	1391.00	1756.00	2	T-1-53023-3S	2000
2164.0	2083.00	2602.00	1731.0	2083.00	2629.00	2	T-1-53024-3S	3000



⑤ = Fuse Location NEC 450-4, 1990.

① KVA capacity of three phase autotransformer bank, using two single phase, 60 Hz transformers connected open delta.

② Catalog No. is for 1 transformer, 2 units are required.

③ Can be reverse connected with no change in KVA.

④ For transformer dimensions, refer to appropriate table in section 1, page 17.

⑤ For proper overcurrent protection, refer to Article 450-4 of N.E.C.

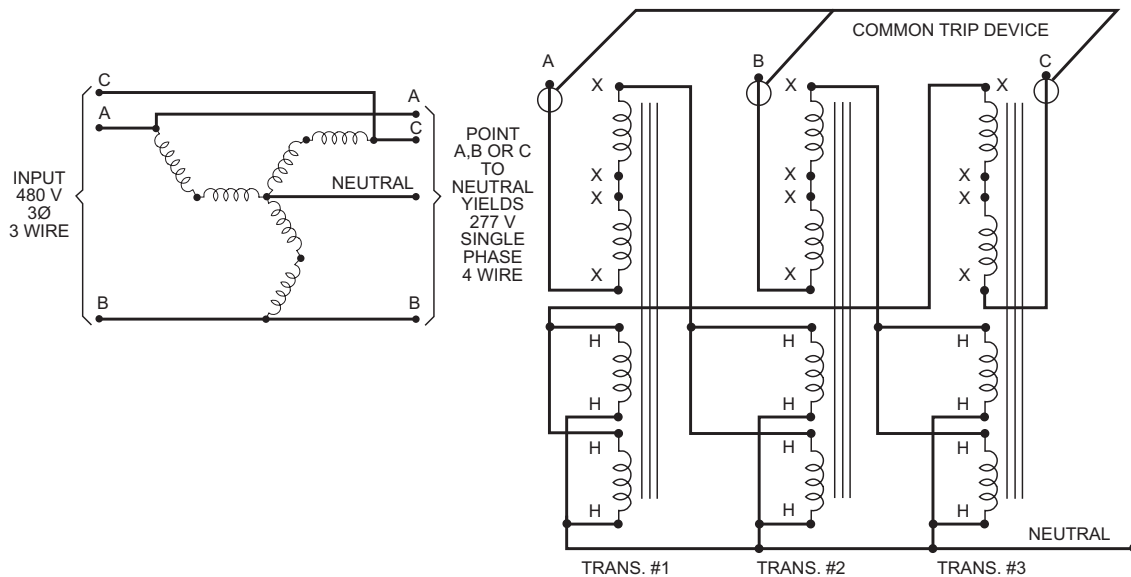
A - G T
F
3-PRIMARY (INPUT): 480 VOLTS
3Ø, 3 WIRE

① 50/60 Hz

SECONDARY (OUTPUT): 480Y/277 VOLTS
3Ø, 4 WIRE

Use 3 Pieces of Type No. ④	Available In	Nameplate KVA For Each Tfmr.	No. of Tfmr. Required	Three Phase KVA	Max. Continuous Amp. Load Per Phase (277 Volts)
T-2-53010-S	No Taps Only	1.0	3	10.80	12.50
T-2-53011-S	No Taps Only	1.5	3	15.60	18.75
T-2-53012-S	No Taps Only	2.0	3	20.70	25.00
T-2-53013-4S	Taps & No Taps	3.0	3	31.20	37.50
T-2-53014-4S	Taps & No Taps	5.0	3	51.90	62.50
T-2-53515-3S	With Taps Only	7.5	3	78.00	93.50
T-2-53516-3S	With Taps Only	10.0	3	103.80	125.00
T-2-53517-3S	With Taps Only	15.0	3	156.00	187.50
T-2-53518-3S	With Taps Only	25.0	3	259.50	312.00
T-2-53019-3S	With Taps Only	37.5	3	390.00	468.00
T-2-53020-3S	With Taps Only	50.0	3	519.00	625.00
T-2-53021-3S	With Taps Only	75.0	3	780.00	935.00
T-2A-53022-3S	With Taps Only	100.0	3	1038.00	1250.00
T-1-53023-3S	With Taps Only	167.0	3	1734.00	2085.00

See Footnote ②



= Fuse Location NEC 450-4, 1990. ③

- ① Applicable for the above connection only.
- ② Connection diagram (using 3 pieces of 1 phase, 60 hertz transformers connected zig-zag auto) for developing a neutral (4th wire) from a 3 phase, 3 wire supply.
- ③ For proper over-current protection, refer to the N.E.C. Article 450-5.
- ④ For transformer dimensions, refer to appropriate table in section 1, page 17.

D Y H N -S T P

V A ?

Many non-standard voltage correction problems can be solved by using standard off-the-shelf single phase transformers. The following is a list of such voltage combinations that can be supplied by the Power Distribution Products Division. Drawings

for these products can be downloaded from our website at www.acmepowerdist.com. If you don't find the particular combination you are looking for, contact our technical services department for further assistance at 1-800-334-5214.

THREE PHASE



VOLTAGES		AVAILABLE KVA RANGE	TYPE OF CIRCUIT	ACME DRAWING NO.
INPUT	OUTPUT			
208 Delta	208Y/120	3-75	Isolation	A-125879
208 Delta	208Y/120	3-86	Auto Zig-Zag ①	A-125895
208 Delta	240 Delta/120	1.68-25.2	O.D. ISO	A-700314
208 Delta	240 Delta	3-75	Isolation	A-125880
208 Delta	416Y/240	3-75	Isolation	A-700598
208 Delta	416Y/240	112.5-300	Isolation	A-700591
208Y/120	208Y/120	3-75	Isolation	A-125857
208Y/120	374Y/216	22.5-75	Isolation	A-125883
208Y/120	374Y/216	112.5-750	Isolation	A-102730
208Y/120	480Y/277	3-75	Isolation	B-39881 (pg 2)
240 Delta	208Y/120	3-15	Isolation	A-125855
240 Delta	208Y/120	9-15	Isolation	A-102723
240 Delta	208Y/120	22.5-75	Isolation	A-102722-B
240 Delta	208Y/120	112.5-750	Isolation	A-125856
240 Delta	208Y/120	3-75	Isolation	A-125858
240 Delta	240 Delta	3-75	Isolation	A-125859
240 Delta	240Y/138	10.3-258.75	Auto Zig-Zag ①	A-125896
240 Delta	374Y/216	22.5-75	Isolation	A-125881
240 Delta	374Y/216	112.5-750	Isolation	A-125882
240 Delta	480Y/277	3-75	Isolation	B-39881 (pg 1)
380 Delta	240 Delta	3-75	Isolation	A-700592
380 Delta	240 Delta	112.5-300	Isolation	A-700593
380 Delta	228 Delta	1.4-7.0	O.D. Auto	A-35633
380 Delta	228 Delta	4.2-7.0	O.D. Auto	A-125892
380 Delta	228 Delta	10.4-34.5	O.D. Auto	A-125893
380 Delta	228 Delta	51-227	O.D. Auto	A-125894
380 Delta	416Y/240	3-75	Isolation	A-700599
380 Delta	416Y/240	112.5-300	Isolation	A-700594
380Y/220	240 Delta	3-75	Isolation	A-700600
380Y/220	240 Delta	112.5-300	Isolation	A-700595
416Y/240	440 Delta	3-75	Isolation	A-700602
416Y/240	440 Delta	112.5-300	Isolation	A-700597
416 Delta	240 Delta	3-75	Isolation	A-700601
416 Delta	240 Delta	112.5-300	Isolation	A-700596

VOLTAGES		AVAILABLE KVA RANGE	TYPE OF CIRCUIT	ACME DRAWING NO.
INPUT	OUTPUT			
416Y/240	208Y/120	3-15	Isolation	A-700319
416Y/240	208Y/120	22.5-75	Isolation	A-700322
480 Delta	240 Delta/120	1.68-5.04	O.D. ISO Hi-Leg ①	A-125849
480 Delta	240 Delta/120	3.36	O.D. ISO Hi-Leg ①	A-125850
480 Delta	240 Delta/120	5.04	O.D. ISO Hi-Leg ①	A-125851
480 Delta	240 Delta/120	8.4	O.D. ISO Hi-Leg ①	A-125852
480 Delta	240 Delta/120	12.6-25.2	O.D. ISO Hi-Leg ①	A-125853
480 Delta	240 Delta/120	42	O.D. ISO Hi-Leg ①	A-125854
480 Delta	240 Delta/120	63-266	O.D. ISO Hi-Leg ①	A-111702
480 Delta	240 Delta	1.68-8.4	O.D. ISO	A-32817-B
480 Delta	240 Delta	5.04-8.4	O.D. ISO	A-125872
480 Delta	240 Delta	12.6-42	O.D. ISO	A-125873
480 Delta	240 Delta	63-420	O.D. ISO	A-125874
480 Delta	416Y/240	3-15	Isolation	A-125875
480 Delta	416Y/240	9-15	Isolation	A-125876
480 Delta	416Y/240	22.5-75	Isolation	A-125877
480 Delta	416Y/240	112.5-750	Isolation	A-125878
480 Delta	394Y/228	9-15	Isolation	A-125884
480 Delta	394Y/228	22.5-75	Isolation	A-125885
480 Delta	394Y/228	112.5-750	Isolation	A-125886
600 Delta	208Y/120	3-6	Isolation	A-102758
600 Delta	208Y/120	9-75	Isolation	A-125863
600 Delta	208Y/120	112.5-500	Isolation	A-125864
600 Delta	240 Delta	3-6	Isolation	A-125860
600 Delta	240 Delta	9-75	Isolation	A-125861
600 Delta	240 Delta	112.5-500	Isolation	A-125862
600 Delta	240 Delta/120	1.68-2.52	O.D. ISO Hi-Leg ①	A-125865
600 Delta	240 Delta/120	3.36	O.D. ISO Hi-Leg ①	A-125866
600 Delta	240 Delta/120	5.04-25.2	O.D. ISO Hi-Leg ①	A-125867
600 Delta	240 Delta/120	42	O.D. ISO Hi-Leg ①	A-125868
600 Delta	240 Delta/120	63-168	O.D. ISO Hi-Leg ①	A-125869
600 Delta	240 Delta	1.68-3.36	O.D. ISO	A-33227-A
600 Delta	240 Delta	5.04-42	O.D. ISO	A-125870
600 Delta	240 Delta	63-280	O.D. ISO	A-125871



① Cannot Be Reverse Connected.