

MISCELLANEOUS

DUCT SEAL COMPOUND



DSC1

Asbestos-free, non-drying, non-toxic, permanently soft.
Adheres to most clean, dry surfaces.
Will not adversely affect plastic materials or corrode metals.

CATALOG NUMBER	UPC/DCI/NAED MFG #01 8997	TRADE SIZE	UNIT PKG	STD PKG
DSC1	43600	1 LB	1	50
DSC5	43605	5 LB	1	10



R15221

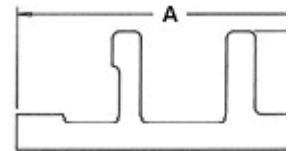
SWITCH BOX SUPPORTS

Galvanized steel



SBS

CATALOG NUMBER	UPC/DCI/NAED MFG #01 8997	TRADE SIZE	UNIT PKG	STD PKG	DIM A	DIM B	DIM C
SBS	18055	----	100	1000	5.135	2.135	.020



UL/CSA NOT APPLICABLE

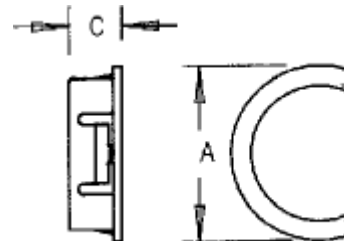
SNAP-IN BUSHINGS

For knock-outs. All-plastic, snap-in type.



4400

CATALOG NUMBER	UPC/DCI/NAED MFG #01 8997	TRADE SIZE	UNIT PKG	STD PKG	DIM A	DIM B	DIM C
4400	04400	1/2	100	1000	1.140	.679	.505
4401	04401	3/4	100	1000	1.420	.900	.505
4402	04402	1	50	500	1.770	1.157	.505
4403	04403	1-1/4	25	250	2.281	1.509	.505
4404	04404	1-1/2	25	250	2.598	1.748	.505
4405	04405	2	20	200	2.919	2.223	.563
4406	04409	2-1/2	20	200	3.421	2.725	.563



E178435 LR 49636

[Products Index](#)

[Table of Contents](#)

[Next](#)



Arlington Industries, Inc.

800-233-4717 | FAX 570-562-0646 | 1 STAUFFER INDUSTRIAL PARK. SCRANTON, PA 18517

[CONTACT US](#) Copyright © 2000 All rights reserved. Revised: October 07, 2003.