

WEBLINK NETWORK APPLIANCE FOR LI COMPLETE CONTROL | WL-BASE

IP connectivity to Lighting Integrator panel network

Set up control schedules through Web browser interface



Multi-user access for those using WinControl software

Integrate with BAS system via BACnet protocol

Description

The WebLink Network Appliance is one option for connectivity between a standard IP network and a Lighting Integrator (LI) panel network. It enables multiple users to access and control a network of LI Complete Control (LIC) panels from any location on an Ethernet network (e.g., LAN, WAN or internet). Optional WebLink Scheduler Software provides scheduling capabilities via a standard web browser. Optional My Lights Software offers personal lighting control via individual desktop PCs. Optional BACnet Integration exposes relays and group codes as BACnet objects.

Operation

WebLink connects to and automatically maintains communications directly with a LIC network through a Data Communications Link (HLINKCC) serial connection. The WebLink provides web browser-based access to panels on the network for viewing panel status and overriding relays. It allows panel network connectivity to be shared among multiple user connections for simultaneous access, providing an IP connection to other installations of WinControl software on remote PCs over a dedicated or enterprise LAN or WAN.

Features

- Enables IP network connectivity to LIC panel network for multiple users via WinControl
- Compatible with legacy CC panels
- Configurable for DHCP services or static IP address
- Optional shelf for rack mounting
- Labels and descriptors of LIC network devices (i.e., relays, switches) automatically synchronize with WinControl for easy device selection
- Provides connectivity with BAS systems using industry standard BACnet protocol
- BAA/TAA-compliant models available

WebLink Scheduler Software

With optional WebLink Scheduler Software, users can employ their browser instead of WinControl to schedule a full calendar. Annual, monthly, weekly and daily calendars are displayed to multiple PCs as web pages. Users can set up new events for any time period by selecting a specific date, time and action, or easily perform modifications of one-time or recurring events. Schedule templates enable creation and storage of alternative schedules for special events that need unique lighting scenarios, an ideal feature for convention and multiuse centers, stores and arenas.

My Lights Software

Optional My Lights software offers personal space lighting control via desktop PC. In its manual mode, My Lights provides users with on/off control via a display on their PC. In automatic mode, My Lights maintains space lighting by monitoring PC mouse and keyboard activity; when activity ceases, My Lights turns lighting off after a preset interval initiated by a blink warning. Users may override this automatic off with any mouse or keyboard movement.

PROJECT

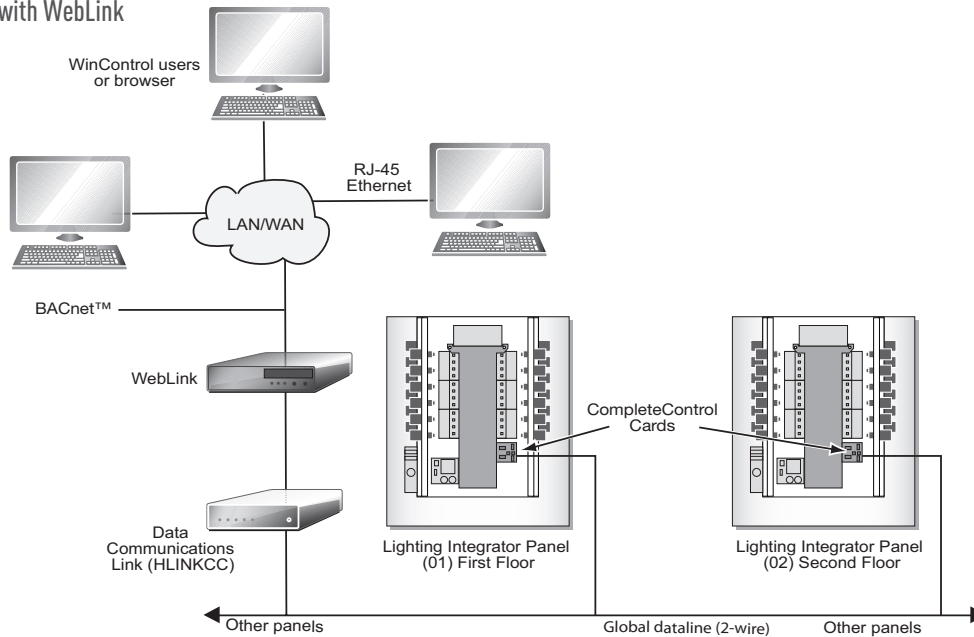
LOCATION/
TYPE

Specifications

- Includes AC Adapter: Input (AC 100~240 V)
- USB port and Serial DB9 connector — for connection to HLINK
- 10/100 RJ45 Ethernet LAN connector
- Dimensions: 7.5" x 8.5" x 2.5" (190.5 mm x 215.9 mm x 63.5 mm) W x H x D
- Shipping weight: 3.2 lbs (1.45 kg)
- One-year warranty.

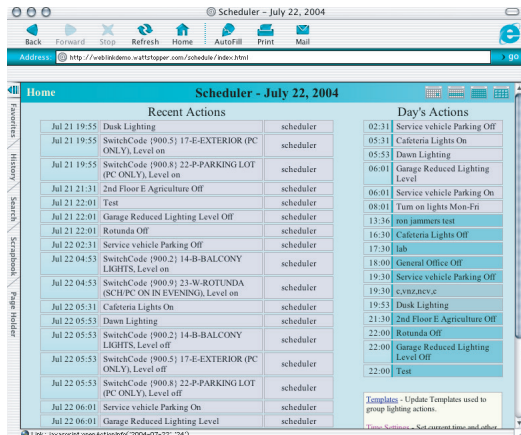
System Layout

LIC Panel System with WebLink



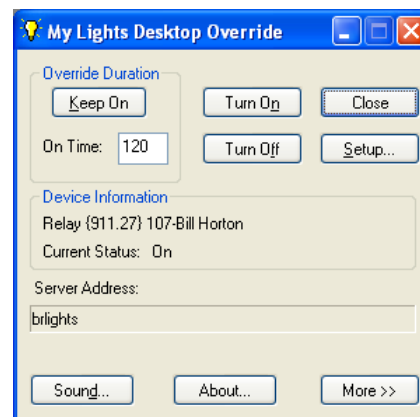
WebLink Options

Main Scheduler Screen



WebLink's main scheduler screen shows recent actions on the LI network, actions scheduled for the day, and quick links to alternate views.

My Lights



Individual users can access this control display from desktop PCs launched from a simple applet in the Windows system tray.

Ordering Information

Catalog #	Description
<input type="checkbox"/> WL-BASE	WebLink v2 Network Appliance with AC adapter
<input type="checkbox"/> WL-OPTSCHEd	WebLink Scheduler Software (browser-based)
<input type="checkbox"/> WL-MYLIGHTS	My Lights Software for personal desktop PC control and override
<input type="checkbox"/> WL-RACKSHELF	Black Shelf for rack mounting up to 50 lbs., 5.25"x17.25"x12.13" (133.4mm x 438.2mm x 308.1mm) HxWxD
<input type="checkbox"/> WL-UPS	UPS backup for WebLink