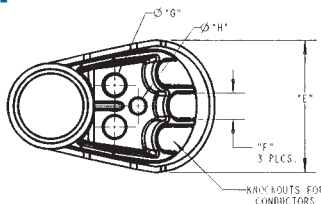


Service Entrance Caps



Cat. No.	Size (in.)	Std Ctn Qty	Dimensions (in.)			
			E	F	G	H
E998D	1/2	5	1.76	0.45	0.45	—
E998E	3/4	20	1.76	0.45	0.45	—
E998F	1	15	2.26	0.59	0.58	—
E998G	1-1/4	20	3.52	0.74	0.71	0.50
E998H	1-1/2	10	3.52	0.74	0.71	0.50
E998J	2	5	4.26	0.83	0.78	0.56
E998K-UPC	2-1/2	2	7.47	1.70	1.31	1.00
E998L	3	2	7.47	1.70	1.31	1.00
E998N	4	2	10.45	2.25	1.88	1.31

End Caps



Cat. No.	Size (in.)	Std Ctn Qty	Std Ctn Wt. (lb)
E958D	1/2	100	3
E958E	3/4	100	4
E958F	1	75	5
E958G	1-1/4	40	4
E958H	1-1/2	30	4
E958J	2	25	5
E958K	2-1/2	10	4
E958L	3	10	5
E958N	4	5	17
E958P	5	5	11
E958R	6	5	13

Meter Hubs



Cat. No.	Size (in.)	Std Ctn Qty	Std Ctn Wt. (lb)
E991G	1-1/4	20	3.8
E991G-UPC	1-1/4	12	2.3
E991H	1-1/2	25	8.0
E991J	2	6	1.0
E991J-UPC	2	12	2.0

Meter Offset



Cat. No.	Size (in.)	Std Ctn Qty	Offset	A
E995G	1-1/4	15	0.758	4.230
E995J	2	8	0.684	4.270

Offset



Cat. No.	Size (in.)	Std Ctn Qty	Std Ctn Wt. (lb)
E994D	1/2	25	3
E994E	3/4	25	3
E994F	1	50	12

End Bells



Cat. No.	Size (in.)	Std Ctn Qty	Std Ctn Wt. (lb)
E997F	1	50	2.6
E997G	1-1/4	35	2.5
E997H	1-1/2	30	2.5
E997J	2	40	5.0
E997K	2-1/2	30	2
E997L	3	50	10
E997M	3-1/2	40	11
E997N	4	30	16
E997P	5	15	8
E997R	6	10	7
E997T	8	3	15