

A

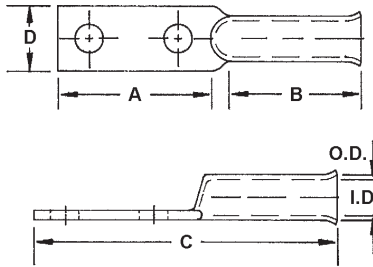
**TYPE
CLNF**

Features

- Manufactured from high strength seamless copper tubing
- Electro-Tin plated
- Chamfered entry
- Color coded
- Suitable for use in circuits rated 35KV or less, proper high voltage spacing and insulation techniques must be used
- UL Listed and CSA Certified with ILSCO and major competitor's compression tools
- Rated to 90° C

Benefits

- Offers maximum conductivity and excellent crimping characteristics
- Provides low contact resistance
- For easy conductor insertion
- Identifies the proper compression die
- Application versatility
- Reduces inventory requirements



Catalog Number	Wire Size	Alt Wire Size	Expanded* Wire Range	Bolt Size	Stud Hole Dia.	Stud Hole Spacing	Dimensions					Die Color Code	Die Index	O.D.	I.D.
							A	B	C	D	G				
CLNF-2/0-12-134	2/0 AWG	1/0 FLEX	2/0-4 AWG	1/2	0.531	1.750	3.000	1.938	5.219	0.813	0.546	Black	I-45	0.562	0.437
CLNF-2/0-38	2/0 AWG	1/0 FLEX	2/0-4 AWG	3/8	0.406	-	0.875	1.938	3.094	0.813	0.414	Black	I-45	0.562	0.437
CLNF-3/0-12-134	3/0 AWG	2/0 FLEX	3/0-2 AWG	1/2	0.531	1.750	3.000	1.938	5.250	0.906	0.546	Orange	I-50	0.609	0.484
CLNF-3/0-12	3/0 AWG	2/0 FLEX	3/0-2 AWG	1/2	0.531	-	1.000	1.938	3.250	0.906	0.546	Orange	I-50	0.609	0.484
CLNF-4/0-12-134	4/0 AWG	3/0 FLEX	4/0-1 AWG	1/2	0.531	1.750	3.000	2.125	5.469	1.000	0.546	Purple	I-54	0.687	0.546
CLNF-4/0-12	4/0 AWG	3/0 FLEX	4/0-1 AWG	1/2	0.531	-	1.000	2.125	3.469	1.000	0.546	Purple	I-54	0.687	0.546
CLNF-250-12-134	250kcmil	4/0 FLEX	250kcmil-1/0 AWG	1/2	0.531	1.750	3.000	2.125	5.563	1.090	0.546	Yellow	I-62	0.750	0.593
CLNF-250-12	250kcmil	4/0 FLEX	250kcmil-1/0 AWG	1/2	0.531	-	1.125	2.125	3.688	1.090	0.546	Yellow	I-62	0.750	0.593
CLNF-300-12-134	300kcmil	250 G, H FLEX	300kcmil-2/0 AWG	1/2	0.531	1.750	3.000	2.250	5.937	1.188	0.546	White	I-66	0.812	0.660
CLNF-300-58	300kcmil	250 G, H FLEX	300kcmil-2/0 AWG	5/8	0.656	-	1.125	2.250	3.875	1.188	0.671	White	I-66	0.812	0.660
CLNF-350-12-134	350kcmil	250 I,K,M FLEX 262.2 DLO	350kcmil-3/0 AWG	1/2	0.531	1.750	3.000	2.563	6.000	1.280	0.546	Red	I-71	0.890	0.703
CLNF-350-58	350kcmil	250 I,K,M FLEX 262.2 DLO	350kcmil-3/0 AWG	5/8	0.656	-	1.125	2.563	4.125	1.280	0.671	Red	I-71	0.890	0.703
CLNF-400-12-134	400kcmil	300 G,H,I,K,M FLEX 313.1 DLO	400kcmil-4/0 AWG	1/2	0.531	1.750	3.000	2.688	6.313	1.375	0.546	Blue	I-76	0.937	0.750
CLNF-400-58	400kcmil	300 G,H,I,K,M FLEX 313.1 DLO	400kcmil-4/0 AWG	5/8	0.656	-	1.500	2.688	4.813	1.375	0.671	Blue	I-76	0.937	0.750
CLNF-500-12-134	500kcmil	350 G,H,I,K,M FLEX 373.7 DLO	500kcmil-250kcmil	1/2	0.531	1.750	3.000	2.813	6.313	1.531	0.546	Brown	I-87	1.062	0.828
CLNF-500-58	500kcmil	350 G,H,I,K,M FLEX 373.7 DLO	500kcmil-250kcmil	5/8	0.656	-	1.500	2.813	4.813	1.531	0.671	Brown	I-87	1.062	0.828

All wire sizes, unless noted otherwise, are American Wire Gauge (AWG)

* When installed with specified dieless tools

See pages 98 to 103 for complete tooling information.

UL File E6207

SureCrimp® Copper Compression Lugs

Long Barrel - Flared End, w/o Sight Hole

Conductor Range: 1111 kcmil - 600kcmil

TYPE CLNF

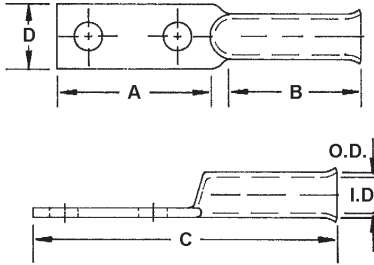
Features

- Manufactured from high strength seamless copper tubing
- Electro-Tin plated
- Chamfered entry
- Color coded
- Suitable for use in circuits rated 35KV or less, proper high voltage spacing and insulation techniques must be used
- UL Listed and CSA Certified with ILSCO and major competitor's compression tools
- Rated to 90° C

Benefits

- Offers maximum conductivity and excellent crimping characteristics
- Provides low contact resistance
- For easy conductor insertion
- Identifies the proper compression die
- Application versatility
- Reduces inventory requirements

A



Catalog Number	Wire Size	Alt Wire Size	Expanded* Wire Range	Bolt Size	Stud Hole Dia.	Stud Hole Spacing	Dimensions					Die Color Code	Die Index	O.D.	I.D.
							A	B	C	D	G				
CLNF-600-12-134	600kcmil	400 G,H,I,K,M FLEX 444.4 DLO	600kcmil-250kcmil	1/2	0.531	1.750	3.000	2.875	6.813	1.680	0.546	Green	I-94	1.187	0.920
CLNF-600-58	600kcmil	400 G,H,I,K,M FLEX 444.4 DLO	600kcmil-250kcmil	5/8	0.656	-	1.500	2.875	5.375	1.680	0.671	Green	I-94	1.187	0.920
CLNF-700-12-134	700kcmil	500 G,H,I,K,M FLEX 535.3 DLO	700kcmil-350kcmil	1/2	0.531	1.750	3.000	2.813	6.625	1.844	0.546	Pink	I-99	1.250	0.991
CLNF-700-58	700kcmil	500 G,H,I,K,M FLEX 535.3 DLO	700kcmil-350kcmil	5/8	0.656	-	1.750	2.563	5.375	1.844	0.671	Pink	I-99	1.250	0.991
CLNF-750-12-134	750kcmil	600 G,H,I,M FLEX 646.4 DLO	750kcmil-500kcmil	1/2	0.531	1.750	3.000	2.813	6.625	1.906	0.546	Black	I-106	1.313	1.031
CLNF-750-58	750kcmil	600 G,H,I,M FLEX 646.4 DLO	750kcmil-500kcmil	5/8	0.656	-	1.938	2.813	5.563	1.906	0.671	Black	I-106	1.313	1.031
CLNF-1000-12-134	1000kcmil	750 G,H, I FLEX 777.7 DLO	1000kcmil-750kcmil	1/2	0.531	1.750	3.000	3.563	7.438	2.188	0.546	White	I-125	1.500	1.172
CLNF-1000-58	1000kcmil	750 G,H, I FLEX 777.7 DLO	1000kcmil-750kcmil	5/8	0.656	-	2.125	3.563	6.563	2.188	0.671	White	I-125	1.500	1.172
CLNF-1111-12-134	1111kcmil	-	-	1/2	0.562	1.750	3.000	3.313	7.438	2.600	0.546	White	IDT-12	1.750	1.458
CLNF-1111-58	1111kcmil	-	-	5/8	0.656	-	2.250	3.563	6.688	2.600	0.671	White	IDT-12	1.750	1.458

All wire sizes, unless noted otherwise, are American Wire Gauge (AWG)

* When installed with specified dieless tools

See pages 98 to 103 for complete tooling information.

UL File E6207