

# 2-, 3-, 4-Gang and 4" Square Switch/Outlet Boxes – Nonmetallic

## Switch/Outlet Boxes

- Meets NEMA OS-2
- UL Listed to UL 514C
- Classified for fire wall assemblies



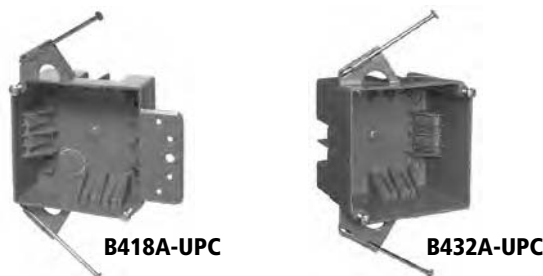
### Two-Gang

### Three-Gang

### Four-Gang

Part No.	Volume (cu. in.)	Description	Size	Integral Clamps	Std. Ctn. Qty.	Std. Ctn. Wt. (lbs.)
•B232A-UPC	32	Two-Gang with captive nails	3"D x 4"W x 3 3/4"L	8 (4 each side)	50	16
B232B-UPC	32	Two-Gang with bracket for 3/8" to 5/8" wallboard – steel or wood stud mounting	3"D x 4"W x 3 3/4"L	8 (4 each side)	50	20
•B344AB	44	Three-Gang with captive nails and bracket support	2 11/16"D x 3 3/4"W x 5 5/8"L	12 (6 each side)	30	14
•B455A-UPC	55	Four-Gang with captive nails and bracket support	2 1/2"D x 3 7/10"W x 7 3/5"L	16 (8 each side)	25	14
•B455AH	55	Four-Gang with captive nails, bracket support, and Hanger Bar	2 1/2"D x 3 7/10"W x 7 3/5"L	16 (8 each side)	25	18

- Suitable for masonry walls

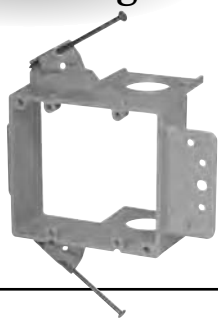


### 4" Square

Part No.	Volume (cu. in.)	Description	Size	Integral Clamps	Std. Ctn. Qty.	Std. Ctn. Wt. (lbs.)
•B418A-UPC	18	Four Square with captive nails	1 5/8"D x 4"W x 4"L	10 (3 top, 3 bottom, 2 each side)	75	19
•B432A-UPC	32	Four Square with captive nails	2 5/8"D x 4"W x 4"L	10 (3 top, 3 bottom, 2 each side)	50	16
•B432AR-UPC	32	Four Square with captive nails	2 5/8"D x 4"W x 4"L	10 (3 top, 3 bottom, 2 each side)	8	3

- Suitable for masonry walls

## Low Voltage Backless Bracket



Open-backed to easily accommodate the bend radiuses required for low voltage cabling and deep devices such as volume controls, and is designed to fit a standard two-gang faceplate. It also features an easy nail-on mounting or screw-in bracket, while more hard shell provides increased durability and no racking. Accepts 3/4" Resi-Gard only.



Part No.	Volume (cu. in.)	Description	Size	Knockouts	Std. Ctn. Qty.	Std. Ctn. Wt. (lbs.)
SC200A	–	Two Gang Backless Bracket	5.35"W x 3.81"L	–	24	7.7