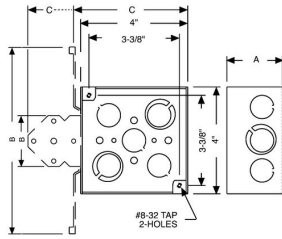




LIFE SAFETY SUPPORT BOXES & EXTENSION RINGS

Life Safety Steel Wall Boxes and Extension Rings - Painted Red
1-1/2 in. Depth, 4 in. Square, Drawn Extension Ring

A30



Catalog #: 911-6

APPLICATIONS

RACO® Extension rings provide a means for adding cubic capacity or as an outlet box for surface conduit
N/A
RACO® Red boxes and covers allow inspector or building owner to immediately identify alarm/fire or life safety systems

PRODUCT FEATURES

Combination screw heads provide for faster installation
Red boxes, covers and extensions for dedicated life safety alarm circuits

UL LISTED

File E195978

FIRE RESISTANCE

Acceptable for use in 2-hour rated walls

GENERAL PRODUCT INFORMATION

Wiring System: Conduit
Color: Red
Country of Origin: USA

CONFIGURATION

Bracket Type: No Bracket
Drawn or Welded: Drawn
Side Knockout(s): (8) 1/2 in. & (4) 3/4 in.
Bottom Knockouts(s): ---

DRAWING DIMENSIONS

Dimension A: 1-1/2 in.

PRODUCT MEASUREMENTS

Depth: 1-1/2 in.
Cubic Inches (cm3): 22.5 (368.7)
Wt. Ea. (Lbs.): 0.459
Product Length (in.): 1.56
Product Width (in.): 4.00
Product Height (in.): 4.00

PACKAGING

Minimum Pack Qty.: 50
Std. Pkg.: 50
Product UPC-A Labeled: No
Weight (Lbs. Per/C): 45.90
Ship Carton Length (in.): 21.10
Ship Carton Width (in.): 8.80
Ship Carton Height (in.): 8.70
Ctn Weight (Lbs.): 22.95
Pallet Qty: 2750
UPC Number: 050169091166
I2of5: 50050169091161