

Straight-Sided Utility Channel



FEATURES

- Die formed steel housing with heat sink embossments for cooler running ballasts
- Ballast cover retained by ¼ turn fasteners
- Individual or row mounting, surface or suspended
- Channel ends double as joiners
- All metal parts are treated with a five stage phosphate bonding process and finished with baked white enamel
- UL listed 1598, cUL or CSA. Damp Location standard

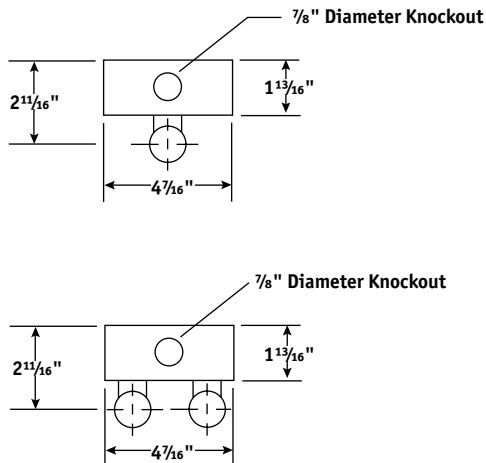
ORDERING INFORMATION

| MODEL | SIZE | NO. OF LAMPS IN CROSS SECTION | LAMP TYPE | BALLAST | VOLTAGE | OPTIONS |
|--|---|--|--|---|---------------------------------------|---|
| CS Straight-Sided Utility Channel | 2 2' 3 3' 4 4' 6 6' 8 8' 16 16' (Two housings) | 1 One 2 Two 3 Three See Product Availability table below. | 14 2', T5: 14 Watt 17 2', T8: 17 Watt 21 3', T5: 21 Watt 24 2', T5HO: 24 Watt 25 3', T8: 25 Watt 28 4', T5: 28 Watt 32 4', T8: 32, 30, 28 or 25 Watt 39 3', T5HO: 39 Watt 48 4", 12 54 4', T5HO: 54 or 51 Watt 96 8', T12: 75 or 60 Watt 96T8 8', T8: 59 Watt | NOTE: See Technical Section for other ballast options. E Electronic T8, Instant Start 3E 3-Lamp Electronic T8, Instant Start 4E 4-Lamp Electronic T8, Instant Start 24E (1) 2-Lamp and (1) 4-Lamp Electronic T8, Instant Start EP Electronic T5 or T8, Programmed Start 3EP 3-Lamp Electronic T5 or T8, Programmed Start 4EP 4-Lamp Electronic T5HO (N/A 347V) or T8, Programmed Start | U 120V-277V 347 347V | BC1 Branch Circuit Wiring, Single Circuit (For more branch circuit wiring options see page 113) GLR Fast Blow Fuse EL Emergency Battery Pack PAF Paint After Fabrication |

ACCESSORIES (ORDER SEPARATELY)

- CSWG3** 3' Wire Guard
- CSWG4** 4' Wire Guard
- CSR4** 4' Symmetric Reflector
- CSRA4** 4' Asymmetric Reflector
- CSRU4** 4' Symmetric Reflector 5% Uplight
- S18** 18" Stem, 8° Swivel Stem and Canopy
- SS18** 18", 45° Swivel Stem, and Canopy
- CSHC** Chain Hanger Assembly

For more accessories see pages 99-101.



PRODUCT AVAILABILITY

| SIZE | NO. OF LAMPS IN CROSS SECTION | NO. OF LAMPS IN FIXTURE | LAMP TYPE | WIDTH | LENGTH | HEIGHT |
|------|-------------------------------|-------------------------|----------------|---------|--------|----------|
| 2' | 1 | 1 | 14, 17, 24 | 4 7/16" | 24" | 1 13/16" |
| | 2 | 2 | 14, 17, 24 | 4 7/16" | 24" | 1 13/16" |
| | 3 | 3 | 17 | 4 7/16" | 24" | 1 13/16" |
| 3' | 1 | 1 | 21, 25, 39 | 4 7/16" | 36" | 1 13/16" |
| | 2 | 2 | 21, 25, 39 | 4 7/16" | 36" | 1 13/16" |
| | 3 | 3 | 25 | 4 7/16" | 36" | 1 13/16" |
| 4' | 1 | 1 | 28, 32, 48, 54 | 4 7/16" | 48" | 1 13/16" |
| | 2 | 2 | 28, 32, 48, 54 | 4 7/16" | 48" | 1 13/16" |
| | 3 | 3 | 28, 32, 54 | 4 7/16" | 48" | 1 13/16" |
| 6' | 1 | 2 | 21, 25, 39 | 4 7/16" | 72" | 1 13/16" |
| | 2 | 4 | 21, 25, 39 | 4 7/16" | 72" | 1 13/16" |
| | 3 | 6 | 21, 25, 39 | 4 7/16" | 72" | 1 13/16" |
| 8' | 1 | 2 | 28, 32, 54 | 4 7/16" | 96" | 1 13/16" |
| | 1 | 1 | 96, 96T8 | 4 7/16" | 96" | 1 13/16" |
| | 2 | 4 | 28, 32, 54 | 4 7/16" | 96" | 1 13/16" |
| | 2 | 2 | 96, 96T8 | 4 7/16" | 96" | 1 13/16" |
| | 2 | 6 | 28, 32 | 4 7/16" | 96" | 1 13/16" |
| | 3 | 6 | 28, 32 | 4 7/16" | 96" | 1 13/16" |
| 16' | 1 | 4 | 28, 32, 54 | 4 7/16" | 192" | 1 13/16" |
| | 1 | 2 | 96, 96T8 | 4 7/16" | 192" | 1 13/16" |
| | 2 | 8 | 28, 32, 54 | 4 7/16" | 192" | 1 13/16" |
| | 2 | 4 | 96, 96T8 | 4 7/16" | 192" | 1 13/16" |