

Single Meter Sockets Without Bypass

200 Amp Self-Contained



204

APPLICATION

- Single meter position
- Designed to receive watt-hour meters that meet ANSI C12.10
- Surface or semi-flush mounting
- Overhead or underground feed

CONSTRUCTION

- Type 3R construction
- Some styles available in stainless steel (SS)
- Snap type sealing ring included
- 5th jaw provision at nine o'clock
- Ring style

STANDARDS

- UL 414 listed, complies with ANSI C12.7

FINISH

- ANSI 61 gray acrylic electrocoat finish

ACCESSORIES

- 5th jaw kit — catalog #50365
- Screw type sealing ring — catalog #25016D (included with MS73 catalog numbers)
- Steel and clear lexan covers for socket opening
- AW hubs

Overhead-Surface Mount

CATALOG NUMBER	AIC RATING	AMPACITY MAX.	CONT.	VOLTAGE	SERVICE TYPE	NUMBER OF JAWS	HUB PROV.	CONDUCTOR LUG RANGE		FIGURE NUMBER	DIMENSIONS (INCHES)		
								PHASE CONDUCTOR LINE/LOAD	NEUTRAL CONDUCTOR		HEIGHT (H)	WIDTH (W)	DEPTH (D)
204	†	200	--	600	1Ø 3W	4	AW	6 AWG - 250 kcmil	6 AWG - 250 kcmil	Fig. 7	15	8 ¼	4 ⅝
204MS68*	†	200	--	600	1Ø 3W	4	AW	6 AWG - 250 kcmil	6 AWG - 250 kcmil	Fig. 7	15	8 ¼	4 ⅝
204MS68A**	†	200	--	600	1Ø 3W	4	AW	6 AWG - 250 kcmil	6 AWG - 250 kcmil	Fig. 7	15	8 ¼	4 ⅝

*2" hub included **Includes 2" hub and screw type sealing ring

Overhead-Flush Mount

CATALOG NUMBER	AIC RATING	AMPACITY MAX.	CONT.	VOLTAGE	SERVICE TYPE	NUMBER OF JAWS	HUB PROV.	CONDUCTOR LUG RANGE		FIGURE NUMBER	DIMENSIONS (INCHES)		
								PHASE CONDUCTOR LINE/LOAD	NEUTRAL CONDUCTOR		HEIGHT (H)	WIDTH (W)	DEPTH (D)
204F	†	200	--	600	1Ø 3W	4	NONE	6 AWG - 250 kcmil	6 AWG - 250 kcmil	Fig. 1,8	15	8	6
204FMS73	†	200	--	600	1Ø 3W	4	NONE	6 AWG - 250 kcmil	6 AWG - 250 kcmil	Fig. 1,8	15	8	6

Underground-Surface Mount

CATALOG NUMBER	AIC RATING	AMPACITY MAX.	CONT.	VOLTAGE	SERVICE TYPE	NUMBER OF JAWS	HUB PROV.	CONDUCTOR LUG RANGE		FIGURE NUMBER	DIMENSIONS (INCHES)		
								PHASE CONDUCTOR LINE/LOAD	NEUTRAL CONDUCTOR		HEIGHT (H)	WIDTH (W)	DEPTH (D)
U204	†	200	--	600	1Ø 3W	4	NONE	6 AWG - 250 kcmil	6 AWG - 250 kcmil	Fig. 2	15	12	4 ⅝
U204MS73	†	200	--	600	1Ø 3W	4	NONE	6 AWG - 250 kcmil	6 AWG - 250 kcmil	Fig. 2	15	12	4 ⅝
U204MSCD	†	250	200	600	1Ø 3W	4	NONE	6 AWG - 250 kcmil	6 AWG - 250 kcmil	Fig. 2	15	12	4 ⅝
U204MS73CD	†	250	200	600	1Ø 3W	4	NONE	6 AWG - 250 kcmil	6 AWG - 250 kcmil	Fig. 2	15	12	4 ⅝

Overhead/Underground-Surface Mount

CATALOG NUMBER	AIC RATING	AMPACITY MAX.	CONT.	VOLTAGE	SERVICE TYPE	NUMBER OF JAWS	HUB PROV.	CONDUCTOR LUG RANGE		FIGURE NUMBER	DIMENSIONS (INCHES)		
								PHASE CONDUCTOR LINE/LOAD	NEUTRAL CONDUCTOR		HEIGHT (H)	WIDTH (W)	DEPTH (D)
U204MS21	†	200	--	600	1Ø 3W	4	AW	6 AWG - 250 kcmil	6 AWG - 250 kcmil	Fig. 4	15	12	4 ⅝
U204SSMS21	†	200	--	600	1Ø 3W	4	AW	6 AWG - 250 kcmil	6 AWG - 250 kcmil	Fig. 4	15	12	4 ⅝
U207	†	250	200	600	3Ø 4W	7	AW	6 AWG - 250 kcmil	6 AWG - 250 kcmil	Fig. 6	18	12	5
U207MS73	†	250	200	600	3Ø 4W	7	AW	6 AWG - 250 kcmil	6 AWG - 250 kcmil	Fig. 6	18	12	5

MS21 = 2" AW Hub installed

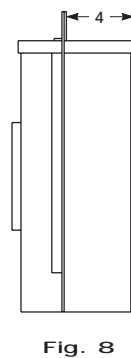
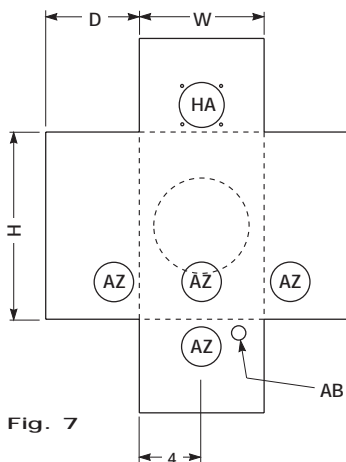
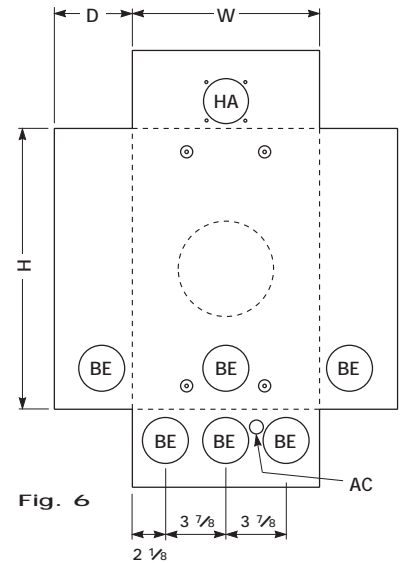
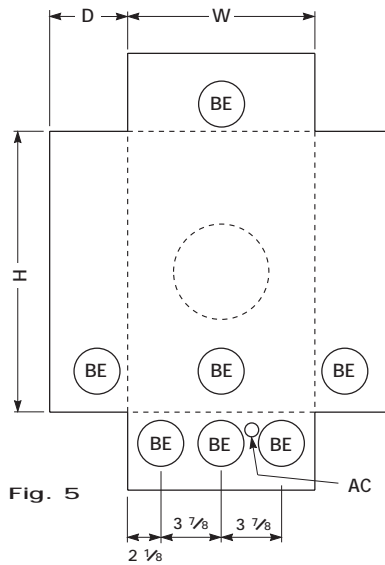
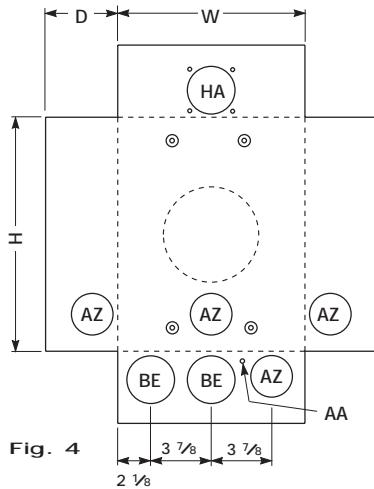
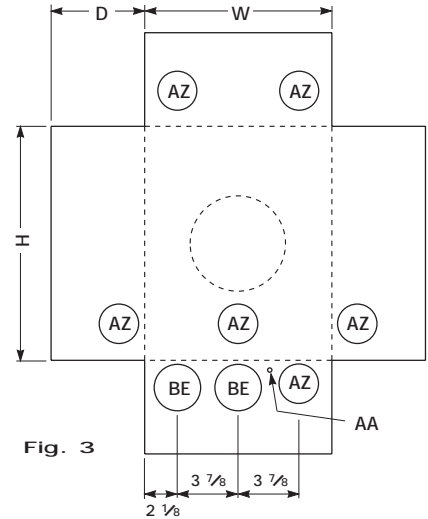
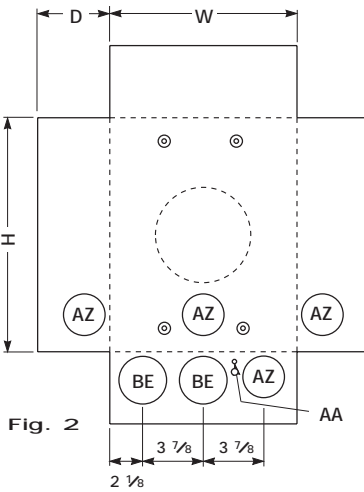
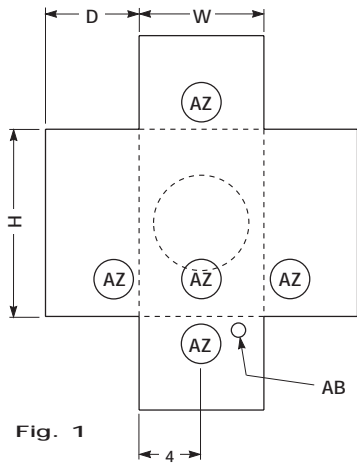
Single Meter Sockets Without Bypass

200 Amp Self-Contained

Underground-Flush Mount

CATALOG NUMBER	AIC RATING	AMPACITY MAX.	CONT.	VOLTAGE	SERVICE TYPE	NUMBER OF JAWS	HUB PROV.	CONDUCTOR LUG RANGE		NEUTRAL CONDUCTOR	FIGURE NUMBER	DIMENSIONS (INCHES)		
								PHASE CONDUCTOR LINE/LOAD				HEIGHT (H)	WIDTH (W)	DEPTH (D)
U204F	†	200	--	600	1Ø 3W	4	NONE	6 AWG - 250 kcmil		6 AWG - 250 kcmil	Fig. 3,8	15	12	6
U204FMS73	†	200	--	600	1Ø 3W	4	NONE	6 AWG - 250 kcmil		6 AWG - 250 kcmil	Fig. 3,8	15	12	6
U204FSS	†	200	--	600	1Ø 3W	4	NONE	6 AWG - 250 kcmil		6 AWG - 250 kcmil	Fig. 3,8	15	12	6
U204FMSCD	†	250	200	600	1Ø 3W	4	NONE	6 AWG - 250 kcmil		6 AWG - 250 kcmil	Fig. 3,8	15	12	6
U204FMS73CD	†	250	200	600	1Ø 3W	4	NONE	6 AWG - 250 kcmil		6 AWG - 250 kcmil	Fig. 3,8	15	12	6
U207F	†	250	200	600	3Ø 4W	7	NONE	6 AWG - 250 kcmil		6 AWG - 250 kcmil	Fig. 5	18	12	5

† = Meter sockets shown on pages 4 & 5 have certain short circuit current ratings when used in conformance with the tables on page 8.
MS73 = Includes screw type sealing ring



Knockouts — Conduit Sizes

- AA = 1/4"
- AB = 1/2"
- AC = 1/2" - 1/4"
- AZ = 2" - 1 1/2" - 1 1/4" - 1"
- BE = 2 1/2" - 2" - 1 1/2" - 1 1/4"
- HA = AW HUB

Single Meter Sockets Without Bypass

200 Amp Self-Contained

Single Meter Sockets/
Without Bypass

1



UG204

APPLICATION

- Single meter position
- Designed to receive watthour meters that meet ANSI C12.10
- Surface or flush mounting
- Underground feed

CONSTRUCTION

- Type 3R construction
- Dedicated straight wire line section
- Some styles available in stainless steel (SS)
- Snap type sealing ring included
- 5th jaw provision at nine o'clock
- Ring style

STANDARDS

- UL 414 listed, complies with ANSI C12.7

FINISH

- ANSI 61 gray acrylic electrocoat finish

ACCESSORIES

- 5th jaw kit — catalog #50365
- Screw type sealing ring — catalog #25016D
- Steel and clear lexan covers for socket opening

Underground-Surface Mount

CATALOG NUMBER	AIC RATING	AMPACITY MAX. CONT.	VOLTAGE	SERVICE TYPE	NUMBER OF JAWS	HUB PROV.	CONDUCTOR LUG RANGE		DIMENSIONS (INCHES)			
							PHASE CONDUCTOR LINE/LOAD	NEUTRAL CONDUCTOR	FIGURE NUMBER	HEIGHT (H)	WIDTH (W)	DEPTH (D)
UG204	†	200 --	600	1Ø 3W	4	NONE	6 AWG - 250 kcmil	6 AWG - 250 kcmil	Fig. 1	17	14	4 5/8
UG204MS82	†	200 --	600	1Ø 3W	4	NONE	6 AWG - 350 kcmil/6 AWG - 250 kcmil	6 AWG - 250 kcmil	Fig. 1	17	14	4 5/8
UG204MSCD	†	250 200	600	1Ø 3W	4	NONE	6 AWG - 250 kcmil	6 AWG - 250 kcmil	Fig. 1	17	14	4 5/8
UG204MS82CD	†	250 200	600	1Ø 3W	4	NONE	6 AWG - 350 kcmil/6 AWG - 250 kcmil	6 AWG - 250 kcmil	Fig. 1	17	14	4 5/8
UG204SS	†	200 --	600	1Ø 3W	4	NONE	6 AWG - 250 kcmil	6 AWG - 250 kcmil	Fig. 1	17	14	4 5/8

Underground-Flush Mount

CATALOG NUMBER	AIC RATING	AMPACITY MAX. CONT.	VOLTAGE	SERVICE TYPE	NUMBER OF JAWS	HUB PROV.	CONDUCTOR LUG RANGE		DIMENSIONS (INCHES)			
							PHASE CONDUCTOR LINE/LOAD	NEUTRAL CONDUCTOR	FIGURE NUMBER	HEIGHT (H)	WIDTH (W)	DEPTH (D)
UG204F	†	200 --	600	1Ø 3W	4	NONE	6 AWG - 250 kcmil	6 AWG - 250 kcmil	Fig. 2,3	17	14	6
UG204FMS82	†	200 --	600	1Ø 3W	4	NONE	6 AWG - 350 kcmil/6 AWG - 250 kcmil	6 AWG - 250 kcmil	Fig. 2,3	17	14	6
UG204FMSCD	†	250 200	600	1Ø 3W	4	NONE	6 AWG - 250 kcmil	6 AWG - 250 kcmil	Fig. 2,3	17	14	6
UG204FMS82CD	†	250 200	600	1Ø 3W	4	NONE	6 AWG - 350 kcmil/6 AWG - 250 kcmil	6 AWG - 250 kcmil	Fig. 2,3	17	14	6
UG204FSS	†	200 --	600	1Ø 3W	4	NONE	6 AWG - 250 kcmil	6 AWG - 250 kcmil	Fig. 2,3	17	14	6

† = Meter sockets shown on this page have certain short circuit current ratings when used in conformance with the tables on page 8.

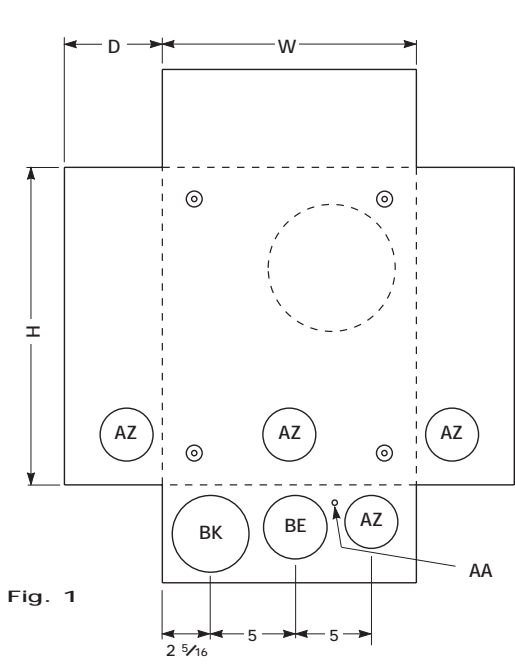


Fig. 1

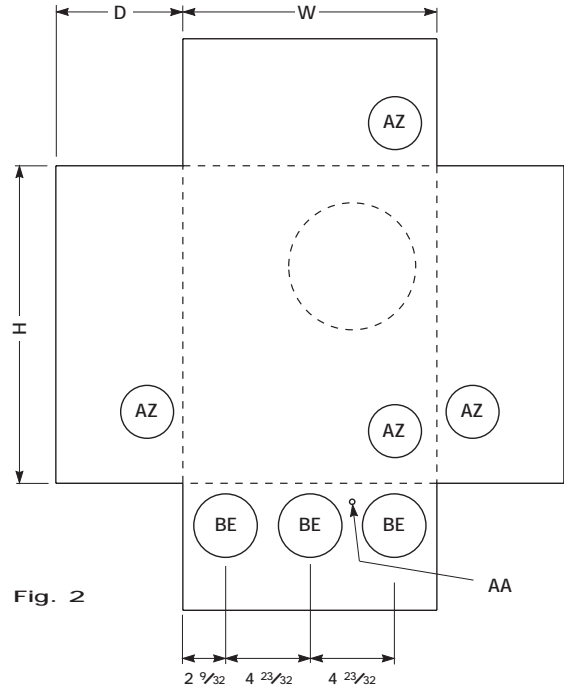


Fig. 2

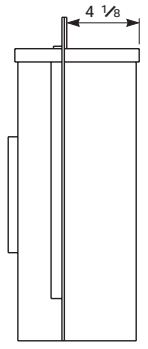


Fig. 3

Knockouts — Conduit Sizes	
AA	= 1/4"
AZ	= 2" - 1 1/2" - 1 1/4" - 1"
BE	= 2 1/2" - 2" - 1 1/2" - 1 1/4"
BK	= 3" - 2 1/2" - 2" - 1 1/2"