

## SSF Series

The SSF series standard strip incorporates a 4-1/4" channel and is available in one, two or three lamp configuration utilizing T5, T8, and T12 lamping. Designed with our easy-to-use Flip-Up socket design, the SSF significantly reduces installation time. The performance and application versatility of this series can be increased by incorporating symmetrical or asymmetrical reflectors. The SSF series is ideal for a variety of applications including commercial, industrial, retail and residential applications.



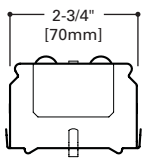
## SNF Series

The SNF series narrow strip incorporates a 2-3/4" channel and is available in a one or two lamp configuration utilizing T5 and T8 lamps and a one lamp configuration utilizing a T12 lamp. Designed with our easy-to-use Flip-Up socket design, the SNF significantly reduces installation time. The performance and application versatility of this series can be increased by incorporating symmetrical or asymmetrical reflectors. The small size of the SNF makes it an ideal choice for size-restricted architectural applications.

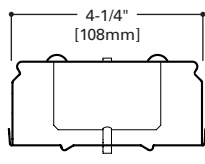


### Standard or Narrow channel

The new family of strips is available in two sizes, a standard channel width of 4-1/4" in the SSF series and a narrow channel width of 2-3/4" in the SNF series. This choice of sizes ensures the SSF and the SNF series can be used in a variety of applications including areas that have size restrictions.



Narrow (SNF)



Standard (SSF)

### Variety of mounting methods

There are a variety of mounting options available for the SSF/SNF family of strips including stem, cable, chain, gripper hanger, tong hanger, and channel connector. The gripper hanger allows for easy mounting to a T-bar grid and can be utilized for stem or surface mounting. The tong hanger is a heavy gauge channel hanger for surface mounting. The CLC channel hanger is a special rigid channel connector designed to give extra support to a continuous channel installation.



Gripper



Tong Hanger



Channel Hanger

# T8

## SSF Ordering Information for T8

SAMPLE NUMBER: SSF-232-UNV-EB81-U

**Tandem Blank**=2', 3' or 4' Length  
8T=8' Length

**Series**  
SSF=Commercial Standard Stripline

**Number of Lamps** (Not Included)  
1=1 Lamp  
2=2 Lamps  
3=3 Lamps<sup>(1)</sup>

**Wattage**  
17=17W T8 (24")  
25=25W T8 (36")  
28T8=28W T8 (48")<sup>(7)</sup>  
32=32W T8 (48")  
96T8=59W T8 SL (96")  
48T8HO=44W (48")  
96T8HO=86W (96")

**Voltage**<sup>(2)</sup>  
120V=120 Volt  
277V=277 Volt  
347V=347 Volt  
UNV=Universal Voltage 120-277

**Options**  
GL=Single Element Fuse  
GM=Double Element Fuse  
EL4=Emergency Installed<sup>(4)</sup> <sup>(5)</sup>  
EL8=Emergency Installed<sup>(8)</sup>

**Ballast Type**<sup>(2)</sup>  
EB8 =T8 Electronic Instant Start.  
Total Harmonic Distortion < 10%  
No. of Ballast  
1 or 2  
EB8 /PLUS= T8 Electronic Instant Start.  
High Ballast Factor >1.13.  
Total Harmonic Distortion < 10%  
No. of Ballast  
1 or 2  
ER8 = T8 Electronic Program Rapid Start.  
Total Harmonic Distortion < 10%  
No. of Ballast  
1 or 2  
ER8 /PLUS= T8 Electronic Program Start.  
High Ballast Factor >1.13.  
Total Harmonic Distortion < 10%  
No. of Ballast  
1 or 2

**HPT8 Ballast**  
HB8\_L=T8 Electronic Instant Start. Low Ballast Factor .77  
HB8 =T8 Electronic Instant Start. Ballast Factor .88  
HB8\_N=T8 Electronic Instant Start. Normal Ballast Factor 1.0  
HB8\_H=T8 Electronic Instant Start. High Ballast Factor 1.15-1.2  
HR8\_DIM=T8 Electronic Program Start Step Dimming. Ballast Factor .88  
HR8\_L=T8 Electronic Program Start. Low Ballast Factor .77 max.  
HR8 =T8 Electronic Program Start. Ballast Factor .88  
HR8\_H=T8 Electronic Program Start. High Ballast Factor 1.15-1.2

**Options**<sup>(3)</sup>  
RIF1=Radio Interference Suppressor  
6-3/18 SJT-C&P-515P=Cord & Plug (120V), (15 AMP)<sup>(6)</sup>  
6-3/18 SJT-C&P-L715P=Cord & Plug (277V) (15 AMP)<sup>(6)</sup>  
PI/CPI=Plug-In Option<sup>(6)</sup>  
TILW=Tandem In-Line Wiring Option (Consult TILW Option Catalog Page)<sup>(6)</sup>

**Packaging**  
U=Unit Pack  
4B=4 Bulk Packing (48" and 96")

### ACCESSORIES (Order Separately)

A1B/Spacer-U=Spacer 1-1/2" to 2-1/2" from ceiling (Use 2 Per Fixture)  
GRP-SSF=Gripper Hanger (Use 2 Per Fixture)  
AYC-Chain/Set=36" Chain Hanger (Use 1 Set Per Fixture)  
SCF=Fixed Stem Set (Specify Length)  
SCS=Swivel Stem Set (Specify Length)  
SCA=Adjustable 48" Stem Set  
CLC-SSF=Long Channel Connector SSF  
SSF-ASY-3=3" Asymmetric Reflector (Specify 2', 3', or 4')<sup>(6)</sup>  
SSF-REV-3=3" Asymmetric Reverse Reflector SSF (Specify 2', 3', or 4')<sup>(6)</sup>  
SSF-SYM-3=6" Symmetric Reflector Specify (2', 3' or 4')  
SSF-SYM12-4=12" Symmetric Reflector  
WG/SSF-2FT=2' Wire Guard  
WG/SSF-3FT=3' Wire Guard  
WG/SSF-4FT=4' Wire Guard  
TOGGLE=Single Toggle NO. 2 (Specify Length)  
Y-TOGGLE=Y Toggle NO. 2 (Specify Length)

NOTES: <sup>(1)</sup> Available in 28T8 and 32 watt. <sup>(2)</sup> Products also available in non-US voltages and frequencies for international markets. Voltage must be specified when ordered with plugs or emergency ballast. <sup>(3)</sup> For SilverLining reflector add SS in Catalog Number, Example: SSF-ASY-SS-4. <sup>(4)</sup> Not available for 2' version. <sup>(5)</sup> For other emergency options specify manufacturer part number and consult the factory for availability (example: EL-FBP240H). <sup>(6)</sup> Socket brackets left uninstalled. <sup>(7)</sup> When utilizing 28W T8 lamps, HPT8 Ballast must be specified. Other ballast restrictions may apply. <sup>(8)</sup> Available for 96T8, 48T8HO and 96T8HO. <sup>(9)</sup> For T12 or T8 applications only (no T12 Slimline or T12 HO).

Specifications & dimensions subject to change without notice. Consult your Cooper Lighting Representative for availability and ordering information.

# T12

## SSF Ordering Information for T12

SAMPLE NUMBER: SSF-220-LTS-120V-U

**Tandem Blank**=2', 3', 4' or 8' Length

**Series**  
SSF=Commercial Standard Stripline

**Number of Lamps**  
1=1 Lamp (Not Included)  
2=2 Lamps (Not Included)

**Wattage**  
20=20W T12 (24")  
30=30W T12 (36")  
48=40W T12 SL (48")  
48HO=60W T12 HO (48")  
96=75W T12 SL (96")  
96HO=110W T12 (96")

**Ballast Start Type**  
LTS=Low Trigger Start (20W only) (120V only)  
HTS=High Trigger Start (20W only)  
LRS=Low Rapid Start (30W only) (120V only)  
HRS=High Rapid Start (30W only) (120V only)

**Voltage**<sup>(1)</sup>  
120V=120 Volt  
277V=277 Volt  
347V=347 Volt

**Options**<sup>(1)</sup>  
GL=Single Element Fuse  
GM=Double Element Fuse  
EL4=Emergency Installed<sup>(3)</sup> <sup>(4)</sup>

**Ballast Type**<sup>(1), (4)</sup>  
Blank=Standard Magnetic Ballast  
LE3=T12 Electronic Ballast  
EB2 = T12 Electronic Rapid Start.  
Total Harmonic Distortion < 20%  
No. of Ballast  
1 or 2

**Options**<sup>(2)</sup>  
RIF1=Radio Interference Suppressor  
6-3/18 SJT-C&P-515P=Cord & Plug (120V) (15 AMP)<sup>(5)</sup>  
6-3/18 SJT-C&P-L715P=Cord & Plug (277V) (15 AMP)<sup>(5)</sup>  
PI/CPI=Plug-In Option<sup>(5)</sup>  
TILW=Tandem In-Line Wiring Option (Consult TILW Option Catalog Page)<sup>(5)</sup>

**Packaging**  
U=Unit Pack  
4B=4 Bulk Packing (48" and 96")

### ACCESSORIES (Order Separately)

A1B/Spacer-U=Spacer 1-1/2" to 2-1/2" from ceiling (Use 2 Per Fixture)  
GRP-SSF=Gripper Hanger (Use 2 Per Fixture)  
AYC-Chain/Set=36" Chain Hanger (Use 1 Set Per Fixture)  
SCF=Fixed Stem Set (Specify Length)  
SCS=Swivel Stem Set (Specify Length)  
SCA=Adjustable 48" Stem Set  
CLC-SSF=Long Channel Connector SSF  
SSF-ASY-3=3" Asymmetric Reflector (Specify 2', 3', or 4')<sup>(6)</sup>  
SSF-REV-3=3" Asymmetric Reverse Reflector SSF (Specify 2', 3', or 4')<sup>(6)</sup>  
SSF-SYM-3=6" Symmetric Reflector Specify (2', 3' or 4')  
SSF-SYM12-4=12" Symmetric Reflector  
WG/SSF-2FT=2' Wire Guard  
WG/SSF-3FT=3' Wire Guard  
WG/SSF-4FT=4' Wire Guard  
TOGGLE=Single Toggle NO. 2 (Specify Length)  
Y-TOGGLE=Y Toggle NO. 2 (Specify Length)

NOTES: <sup>(1)</sup> Products also available in non-US voltages and frequencies for international markets. <sup>(2)</sup> For SilverLining reflector add SS in Catalog Number, Example: SSF-ASY-SS-4. <sup>(3)</sup> Not available for 2' version. For other emergency options specify manufacturer part number and consult the factory for availability (example: EL-FBP240H). <sup>(4)</sup> Maximum width clearance for ballast in channel is 2-7/32". <sup>(5)</sup> Socket brackets left uninstalled. <sup>(6)</sup> For T12 or T8 applications only (no T12 Slimline or T12 HO).

Specifications & dimensions subject to change without notice. Consult your Cooper Lighting Representative for availability and ordering information.