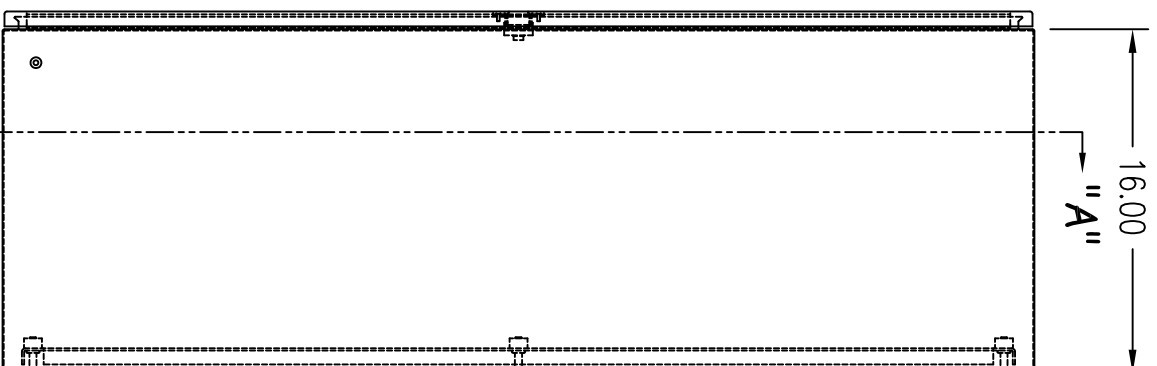
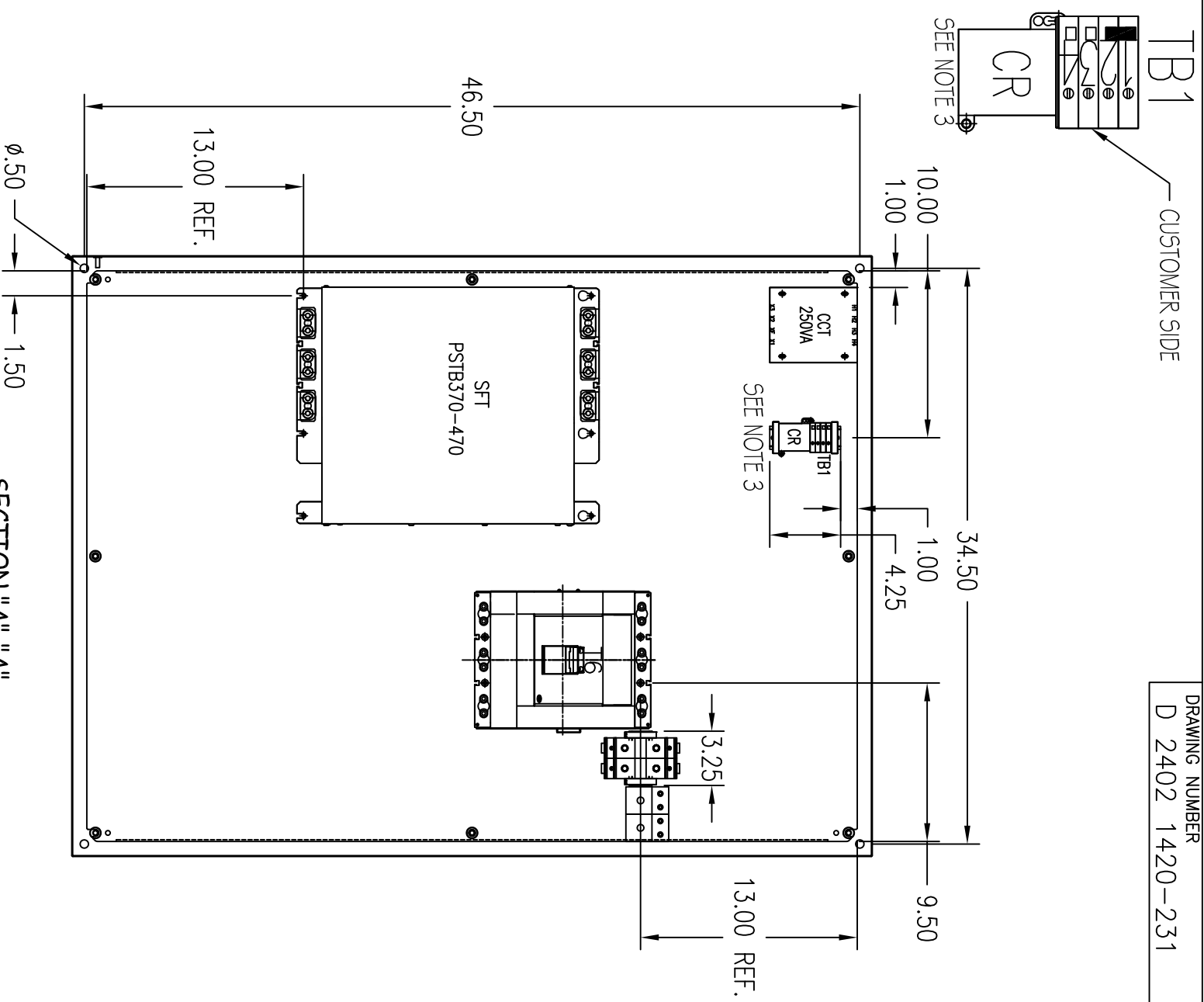


FRONT VIEW



**"A-A"
SIDE VIEW**



SECTION "A-A"

- NOTES:
1. PLACE RUN LIGHT ABOVE DEVICE USED TO STOP MOTOR. IF EQUIPPED, PLACE POWER LIGHT BELOW RUN LIGHT.
 2. FOR MODELS EQUIPPED WITH HOA AND START-STOP, PLACE STOP TO LEFT OF HOA, PLACE RUN LIGHT ABOVE HOA IF REQUIRED.
 3. T.B. & CR WILL BE ADDED PER BOM AND SCHEMATIC.

DRAWING NUMBER D 2402 1420-231		REV. LET.		REVISIONS		DATE		REV. OR APPO BY		REV. LET.		DO NOT SCALE DRAWING		SCALE: 7/64		DIMENSIONS ARE IN INCHES		THIS DRAWING IS THE PROPERTY OF ABB Inc. AND CONTAINS PROPRIETARY AND CONFIDENTIAL INFORMATION WHICH MUST NOT BE OR DISCLOSED WITHOUT THE AUTHORIZATION BY ABB Inc.		DATE 2/18/08		REV. C		TITLE PSTB SOFTSTARTER INTERNAL AC1 BYP/SUS PSTB370-470 & S6	
												STANDARD TOLERANCES 3 PL DEC.		Material: C-S0483616 48 X 36 X 16 N4.12		Finish:				DRAWN HK		REV. B		DRAWING NUMBER D 2402 1420-231	
												±.030		±.030		±1°				PROJECT NO.		SIZE B			