



Project: \_\_\_\_\_

Fixture Type: \_\_\_\_\_

Location: \_\_\_\_\_

Contact/Phone: \_\_\_\_\_

## FLEX 12

Flexible Low Voltage Trac System

## TRAC SECTIONS, CONNECTORS, MONOPOINTS & TOOLS

### TF4, TF8, TFW4, TF23, TF24, TF30, TF40 & TF540

#### PRODUCT DESCRIPTION

Flex 12's unique trac construction consists of a flexible insulating core that separates two flat aluminum conductors. It can be installed in straight sections or curved in the field to suit most any application. It may be used in conjunction with 12V or 24V step down transformers, plus the wide variety of Flex 12 connectors, lampholders and pendants.

#### PRODUCT SPECIFICATIONS

**Construction** Parallel, flat aluminum conductors separated by a thin, flexible insulator • Available in 4' or 8' lengths • Standard lengths may be cut-to-length by installer • Natural aluminum finish.

**Electrical** Rated 25 amps at 12V (300VA) or 24V (600VA)  
• Electrical feeds are ordered separately (see [D5.1.1](#) and [D5.1.2](#)).

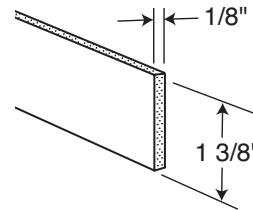
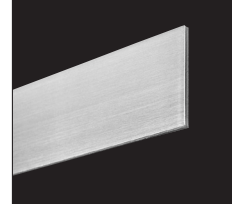
**Labels** UL listed, CSA certified • New York City Approved.

Product specifications subject to change without notice.

#### PRODUCT INSTALLATION

Trac may be installed in straight sections or field curved to conform to architectural surroundings • Trac may be curved at a 4" minimum radius, with 15" minimum radius at electrical feed or fixture locations • Trac may be cut-to-length in the field using shear or fine-tooth hacksaw • TF23 Straight Connector may be used to electrically and/or mechanically join sections of trac • A variety of ceiling mount accessories are offered for close-to-ceiling or suspended applications (see [D5.1.1](#)) • A variety of wall mount accessories are offered for wall installations (see [D5.1.2](#)).

#### DIMENSIONS



#### PRODUCT CODES

Catalog Number	Description	Actual Length	Finish
TF4SL	4' Flexible Section	48"	Silver (Natural Aluminum)
TF8SL	8' Flexible Section	96"	Silver (Natural Aluminum)

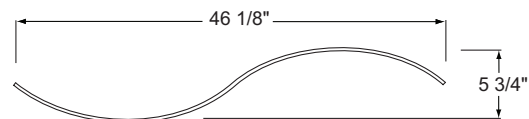
#### Wave Trac

##### TFW4SL

Wave Trac

Flex 12 Trac section, factory-formed into a sine wave pattern. Nominal 4' length. 25" bend radius. Natural aluminum finish.

Dimensions: 46 1/8" L x 5 3/4" W x 1 3/8" H



# FLEX 12

Flexible Low Voltage Trac System

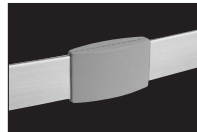
## TRAC SECTIONS, CONNECTORS, MONOPOINTS & TOOLS

### TF4, TF8, TFW4, TF23, TF24, TF30, TF40 & TF540

#### Straight Connector

##### TF23SL

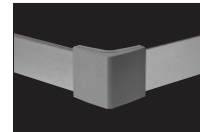
Straight Connector  
Electrically and/or mechanically joins sections of Flex 12 Trac. 25 amp capacity. Silver finish.



#### Right Angle Connector

##### TF24SL

Right Angle Connector  
Electrically and/or mechanically joins two sections of Trac at a right angle (90°). 25 amp capacity. Silver finish.



#### End Cover

##### TF30SL

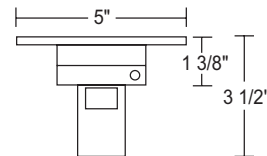
End Cover  
Optional vinyl sleeve protects end of trac and conceals sharp corners. Silver finish.



#### Monopoint

##### TF40SL

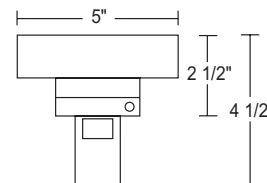
Monopoint  
Designed to accept Flex 12 lampholders or pendants. Operates with remote mounted transformer (order separately). Canopy mounts over standard 4" ceiling outlet box. Silver finish.



#### Monopoint with Integral Transformer

##### TF540SL

Monopoint w/Integral Electronic Transformer  
Designed to accept halogen Flex 12 lampholders or pendants. Includes integral 12V, 50VA electronic transformer. Mounts over standard 4" ceiling outlet box. Silver finish.



##### TF540U-SL

LED-Compatible Monopoint w/Integral Electronic Transformer  
Same as above except compatible with both LED and halogen fixtures. Uses Hatch RS-12-60M-LED 60VA 12VAC solid state electronic transformer. Compatible with most 12VAC LED lamps (by others) — contact lamp manufacturer to confirm compatibility. Also compatible with 50W max. 12VAC halogen lamps.

Product specifications subject to change without notice.



1300 S. Wolf Road • Des Plaines, IL 60018 • Phone (847) 827-9880 • Fax (847) 827-2925  
220 Chrysler Drive • Brampton, Ontario • Canada L6S 6B6 • Phone (905) 792-7335 • Fax (905) 792-0064  
Visit us at [www.junolightinggroup.com](http://www.junolightinggroup.com)

Printed in U.S.A. ©2014 Juno Lighting, LLC.