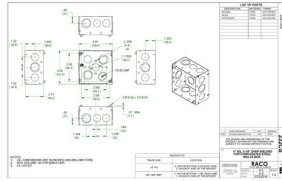




## 4 IN. SQUARE WELDED BOXES - 2-1/8 IN. DEEP WITH CONDUIT KO'S

4 in. Square Boxes, 2-1/8 in. Deep - Welded with Elevated Conduit KO's  
600V, Elevated Side Knockouts, Raised Ground

A13



Catalog #: 232CS

### APPLICATIONS

RACO® Boxes are installed in walls or ceilings for lighting fixtures, switches or receptacles  
Square boxes are used where multiple conductor runs are split into two or more directions to bring power to a number of electrical devices

### PRODUCT FEATURES

Elevated Knockouts on two sides help to eliminate the need for bends or offsets by allowing the conduit runs to enter straight into the box  
TKO® Knockouts offer greater flexibility with RACO patented combination 1/2" and 3/4" knockout  
Combination screw heads provide for faster installation

### UL LISTED

File E195978

### COMPLIANCES

All RACO® single gang, two gang, 4 in. square, and single gang gangable UL listed steel boxes are acceptable for use in 2-hour fire rated walls. For additional information, consult UL "Fire Resistance Directory" or the UL website at [www.ul.com](http://www.ul.com)  
600V Per UL 514-A, suitable for use without a bonding jumper in circuits up to 600 volts  
MSDS  
[www.hubbell-rtb.com/certifications/Hubbell-RACO MSDS for Steel Boxes & Covers.pdf](http://www.hubbell-rtb.com/certifications/Hubbell-RACO%20MSDS%20for%20Steel%20Boxes%20&%20Covers.pdf)

### FIRE RESISTANCE

Acceptable for use in 2-hour rated walls

### GENERAL PRODUCT INFORMATION

Wiring System: Conduit  
Country of Origin: USA

### CONFIGURATION

Bracket Type: No Bracket  
Drawn or Welded: Welded  
Raised Ground: Yes  
Side Knockout(s): (8) 1/2 in. & (4) TKO®  
Bottom Knockouts(s): (2) 1/2 in. & (2) TKO®

### DRAWING DIMENSIONS

Dimension A: 2-1/8 in.

### PRODUCT MEASUREMENTS

Depth: 2-1/8 in.  
Cubic Inches (cm<sup>3</sup>): 30.3 (496.5)  
Wt. Ea. (Lbs.): 0.898  
Product Length (in.): 2.19  
Product Width (in.): 4.00  
Product Height (in.): 4.00

### PACKAGING

Minimum Pack Qty.: 25  
Std. Pkg.: 25  
Product UPC-A Labeled: No  
Weight (Lbs. Per/C): 89.80  
Ship Carton Length (in.): 18.75  
Ship Carton Width (in.): 8.88  
Ship Carton Height (in.): 7.38  
Ctn Weight (Lbs.): 22.45  
Pallet Qty: 1750  
UPC Number: 050169932322  
I2of5: 50050169932327