

THIS COPY IS PROVIDED ON A RESTRICTED BASIS AND IS NOT TO BE USED IN ANY WAY DETRIMENTAL TO THE INTERESTS OF PANDUIT CORP.

NOTES:

- UL LISTED AND CSA CERTIFIED FOR:
  - A. 600 V MAX. VOLTAGE RATING
  - B. TEMPERATURE RATING OF INSULATION: 150° (221° F)
  - C. SOLID OR STRANDED, COPPER WIRE
- MATERIAL:
  - A. STAMPING (22-18 & 16-14) - .03 [0.8] THK COPPER, TIN PLATED
  - B. STAMPING (12-10) - .04 [1.0] THK COPPER, TIN PLATED
  - C. BRAZED SEAM
  - D. HOUSING - NYLON
- ALL DIMENSIONS ARE IN INCHES EXCEPT DIMENSIONS IN BRACKETS WHICH ARE MILLIMETERS
- INSTALLATION TOOLS: CT-100, CT-1550, CT-1551
- \* 12-10 AWG STRANDED AND 12 AWG SOLID COPPER WIRE WITH CT-1550 & CT-1551 TOOLS
  - \*\* 18-14 AWG WIRE RANGE WITH CT-1550 AND CT-1551 TOOLS
  - \*\*\* 22-16 AWG WIRE RANGE WITH CT-1550 AND CT-1551 TOOLS
- WIRE STRIP LENGTH:
 

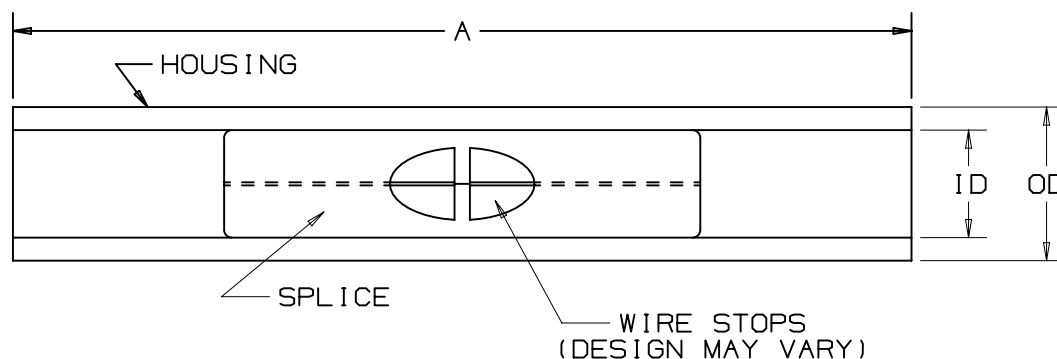
BSN18 & BSN14 -	9/32	+	1/32	[	7.1	+	0.8	]	-	0
										0
BSN10 -	9/32	+	1/32	[	7.1	+	0.8	]	-	0
										0
- SEE [WWW.PANDUIT.COM](http://WWW.PANDUIT.COM) FOR PACKAGE QUANTITIES INDICATED BY PART NUMBER SUFFIX

PANDUIT PART NUMBER	WIRE RANGE (AWG)	COLOR CODE	DIMENSIONS in.			
			MAX WIRE INSUL DIA	A ±.020 (.51)	ID ±.020 (.51)	OD ±.020 (.51)
BSN18	***22-18	RED	.115 (2,92)	1.15 (29,2)	0.13 (3,3)	0.20 (5,1)
BSN14	**16-14	BLUE	.148 (3,76)	1.15 (29,2)	0.15 (3,9)	0.20 (5,1)
BSN10	*12-10	YELLOW	.210 (5,33)	1.14 (29,0)	0.21 (5,3)	0.27 (6,8)



LISTED  
587H  
E52164

CERTIFIED  
LR31212



REV	DATE	BY	CHK	APR	DESCRIPTION	ECN
13	2/15	TMR	TMR	RGB	ADDED NOTE ON BRAZED SEAM AND PACKAGING REVISED TITLE BLOCK	N41182BA-DC

TITLE <b>NYLON INSULATED BUTT SPLICES</b>		CUSTOMER DRAWING	
ITEM REVISION NAME N41182BA/13		<div style="font-size: 2em; font-weight: bold; margin: 0;">PANDUIT</div>	
DATASET FILE NAME N41182BA/13			
UNLESS OTHERWISE SPECIFIED, DIMENSIONAL TOLERANCES ARE: IN [ mm ]			MATERIAL:
.X ±	.XXX ±	DRAWING NUMBER: <b>A41182</b>	
.XX ±	ANGLES ±		
DRAWN BY	DATE	CHK	SCALE
FES		RLS	N/A
SHT 1 OF 1			SIZE <b>A</b>

D101000A/16