



# Cutler-Hammer

## POW-R-WAY III Low Voltage Bus Plug

Installation Manual IM017010003E

Effective March 2005  
New Information

### CAUTION

- THE POWER TO THE BUSWAY / BUS DUCT SHOULD BE TURNED OFF TO ENSURE THAT THE INSTALLATION OF THE BUS PLUG IS PERFORMED IN THE SAFEST MANNER POSSIBLE.
- PRIOR TO INSTALLING THIS BUS PLUG, INSPECT IT FOR DAMAGE.
- MAKE SURE THERE ARE NO MISSING PARTS.
- SAFETY WHILE WORKING ON THIS EQUIPMENT MUST BE EXERCISED.
- THE HANDLE MUST BE IN THE OFF POSITION BEFORE MOUNTING BUS PLUG INTO BUSWAY.

1. The handle can be placed on either side or end of the bus plug (Figures 1 & 2). On vertical mounts, the handle should be mounted on the side, and on horizontal mounts. The handle should be mounted on the end.



FIGURE 1.



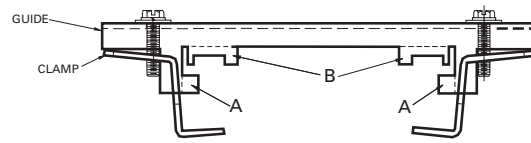
FIGURE 2.

2. Make sure handle is in the OFF position before mounting bus plug onto busway.
3. Back the screws on the clamp and guide far enough so that the clamps can be positioned as shown in **Figure 3** and can clear the flanges of the busway. If installing a bus plug over a joint cover or if the plug has a 200% neutral, refer to **Figure 4**.
4. Open outlet cover of the plug-in opening on the busway (**Figure 5**). Do not remove screw from cover. The screw may be used to close cover later (**Figure 6**).
5. Align bus plug with busway. Use the aligning pin mounted on the end of the bus plug as a reference point.
6. Insert aligning pin into the hole in the busway as shown in **Figures 7 and 8**.
7. Push bus plug onto busway. A reasonable amount of force is required to ensure that the stabs are engaged onto the bus bars. To ensure that the bus plug is properly seated, refer to the arrows in **Figure 9**. The corners of the molded insulators should be touching all four corners.
8. Position the clamps as shown in **Figure 10**. Make sure that the clamp is flush against the flange of the busway before torquing the hardware down. Tighten the hardware until screw can no longer be turned without doing damage to the threads.
9. Tighten the clamp closest to the guide pin first (**Figure 11**) and then tighten the clamp on the opposite side (**Figure 12**) of the bus plug. Continue until all clamps are secure.
10. To ensure that the bus plug is mounted level, check the load end of the bus plug as indicated in **Figure 12**. The guide mounted on the back of the bus plug should be touching the flanges of the busway.
11. To remove, turn the handle to the OFF position. Turn the power to the busway off. Perform this procedure (**Steps 9 – 3**) in reverse.



**FIGURE 3.**

Before assembling plug-in units to busway, observe the instructions below.



1. When clamp and guide is located on top of a joint cover in the busway:
  - (A) Break off tabs "B" for all types of busway.
  - (B) Break off tabs "A" for busway with 200% (500 TK.) neutral bars and when tabs interfere with joint cover hardware.
2. When clamp and guide is not located on top of a joint cover in the busway:
  - (A) Do not break off tabs "B."
  - (B) Break off tabs "A" only for busway with 200% (500 TK.) neutral bar and 50% (1.25 TK.) internal ground bar.

**FIGURE 4.**



**FIGURE 5.**



**FIGURE 6.**



FIGURE 7.



FIGURE 10.



FIGURE 8.



FIGURE 11.

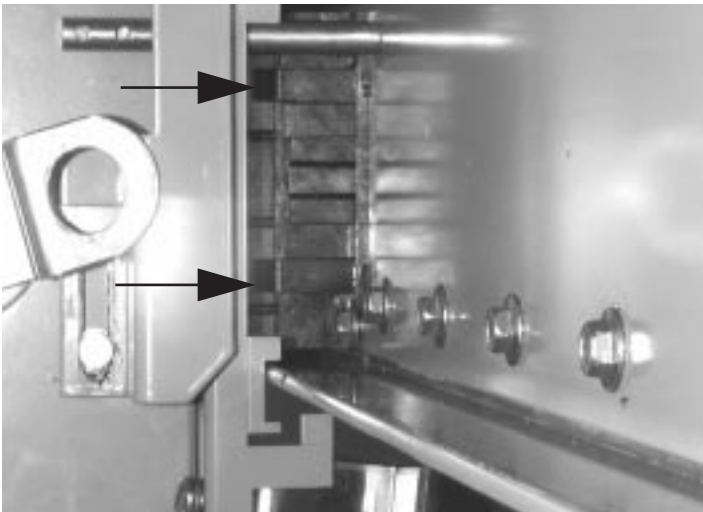


FIGURE 9.



FIGURE 12.

Eaton Electrical Inc.  
1000 Cherrington Parkway  
Moon Township, PA 15108-4312  
United States  
tel: 1-800-525-2000  
[www.EatonElectrical.com](http://www.EatonElectrical.com)

**EAT•N**

**Cutler-Hammer**

© 2005 Eaton Corporation  
All Rights Reserved  
Printed in USA  
Publication No. IM017010003E / Z3204  
March 2005