



**RAIL-BASED
MOUNTING SYSTEM
FOR TILE AND
COMPOSITION
SHINGLE ROOFS**

CLICKFIT

**QUICK
RELIABLE
INNOVATIVE**

FOR INSTALLERS, BY INSTALLERS

EcoFasten develops, engineers and supplies solar rooftop mounting solutions for the commercial, industrial and residential markets. Built on continuous innovation, rigorous quality standards and excellent customer service, EcoFasten has more than 6 GW of installed capacity worldwide. All mounting systems are designed and developed by installers for installers. EcoFasten has simplified installations with the fastest, most economical mounting solutions on the market.

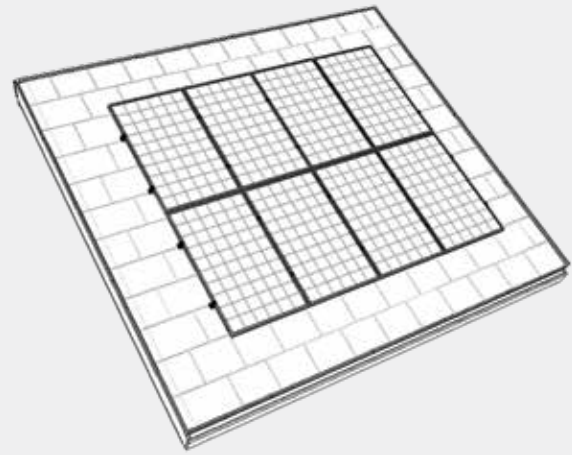


4141 W Van Buren St, Ste 2
Phoenix, AZ 85009

☎ 1-877-859-3947

✉ info@ecofastensolar.com

CLICKFIT RAIL-BASED MOUNTING SYSTEM FOR TILE AND COMPOSITION SHINGLE ROOFS



FLEXIBLE DESIGN AND LAYOUT

- Fully height adjustable
- Suitable for all tile and composition shingle roofs
- Fully compatible with all EcoFasten roof attachments



FAST INSTALLATION TIME

- Minimal lightweight, modular components
- Screwless, click-in assembly
- Pre-assembled components



ROBUST AND RELIABLE

- Secure click-in place rail system
- UL 2703 and UL 1703 Class A certified
- 20-year warranty

CLICKFIT



DESIGNED FOR INSTALLERS BY INSTALLERS

ClickFit is the solution for the installer looking for a high-quality and low-cost solar mounting system. The ClickFit system incorporates the best mounting design into a newly developed product. Its universal components allow it to be compatible with both composition shingle and tile roofs. The components of ClickFit are made from sturdy, lightweight aluminum, making it easy for installers to handle.

ClickFit benefits from a smart and simple design and includes many unique features. The mounting system can be installed in a variety of configurations due to its full height adjustability. ClickFit's cable management allows for a streamlined final assembly. The flashing design has multi-stage waterproofing, ensuring a watertight seal. The system is designed for the rails to click in place for both composition shingle and tile roofs.



Quick and easy assembly



UL 2703 and
UL 1703 Class A certified



One-tool approach



20 year warranty