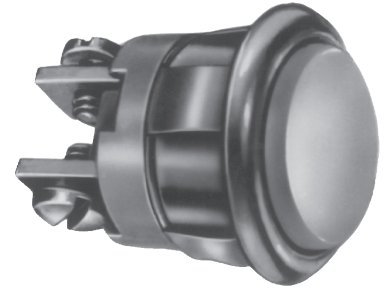


Low Voltage Industrial Push Buttons

Panel Mount

620 Series



Low voltage, panel mount push buttons with large terminals. Available with an illuminated center for use in unlighted areas.

Use for low voltage, low cost, industrial and commercial applications requiring long life. May be used with the Cat. No. 147-1 mounting plate (page 10-11) or 147-10 room annunciator mounting plate (page 14-8).

Polished chrome or brass
 Insulated for mounting on metal cabinets
 Snap fit

Contact ratings:
 8V: 2 amps AC, 2 amps DC
 24V: .67 amps AC, .5 amps DC
 48V: .3 amps AC, .3 amps DC
 Mounting hole dia: 5/8" (16mm)
 Mounting hole depth: 3/4" (19mm)
 Normally open momentary contacts

Cat. No.	Volts	Finish	
		Rim	Center
620	8V AC or DC	Chrome	Ivory
621*	24V AC or DC		
620-B	48V AC or DC	Brass	Ivory
621-B*			
620-L	6-16 V AC	Chrome	Lighted Ivory
620-LB		Brass	Lighted Ivory

*500 unit bulk pack