

# REMOVABLE PLUGS

## Close-Up Plugs

### STANDARD FEATURES

- Tapered thread close-up plugs for explosionproof conduit entrances. Provides 5 full threads of engagement.. Style A is made of aluminum alloy, these plugs have screw-driver slots and fit practically flush when installed.

#### STYLE A - ALUMINUM ALLOY SLOTTED HEAD

Catalog #	Conduit Size (in.)	Standard Package	
		Qty.	Weight (lbs.)
OX2	½	100	6 ¾
OX3	¾	100	10 ¼
OX4	1	50	9
OX5	1 ¼	50	12
OX6	1 ½	50	12
OX8	2	50	12
OX10	2 ½	15	20 ½
OX12	3	15	30
OX14	3 ½	15	40

#### STYLE B - PLATED STEEL SQUARE DRIVE

Catalog #	Conduit Size (in.)	Standard Package	
		Qty.	Weight (lbs.)
3-265	½	100	6 ¾
3-275	¾	100	10 ¼

Dimensions are nominal (inches).



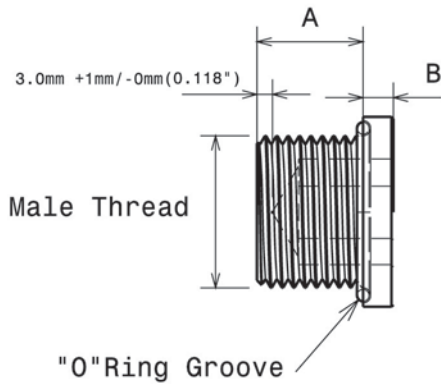
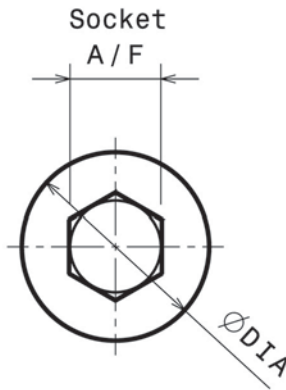
Style A



Style B

# REMOVABLE PLUGS

## Close-Up Plugs - Type 'U'



### STANDARD FEATURES

- Used to seal unused cable gland or conduit entries in Exe approved enclosures, maintaining the hazardous location certification and the overall integrity of the installation.

PART NUMBER BUILD **U5** **20** **S** **NT**

BASE CATALOG NUMBER

**O-RING**  
Nitrile (std.) - NT  
Silicone - SC

**MATERIAL**  
Nickel Plated Brass - N  
316 Stainless Steel - SC

THREAD DESIGNATION						
Metric	NPT	NPS	ISO	ISO	ET	PG
16	½	½S	½P	½T	½E	7
20	¾	¾S	¾P	¾T	¾E	9
25	1	1S	1P	1T	1E	11
32	1¼	1¼S	1¼P	1¼T	1¼E	13
40	1½	1½S	1½P	1½T	1½E	16P
50	2	2S	2P	2T	2E	21
63	2½	2½S	2½P	2½T	2½E	29
75	3	2S	3P	3T	3E	36
80	3½	3½S	3½P	3½T		42
85	4	4S	4P	4T		48
90	Note: Metric sizes M80 and larger are 2.0mm					
95	pitch is Standard, for 1.5mm pitch add *					
100						

### CERTIFICATIONS

Class I, Div 1 Groups A, B, C & D  
AExd IIC / AExe II Class I, Zone 1

II 2 GD Exd IIC/Exe II Category 2 & 3  
CSA Standard C22.2 No. 30

