

Insulating Bushings

For Threaded Rigid Conduit & IMC

Features:


- High impact black thermosetting phenolic bushings, with at 150°C UL temperature rating, that will not soften, melt or burn.

Type A

Use:

To insulate end of threaded rigid and IMC

Third Party Certification:

 UL Listed: E-11853

 CSA Certified: 11584

Type BB

Use:

To insulate cables passing through metal boxes or troughs

Third Party Certification:

 UL Listed: E-20933

 CSA Certified: 11584

Type BBL

Use:

Type BB provided with a steel locknut

Third Party Certification:

 UL Listed: E-20933

 CSA Certified: 11584

Type ABB

Use:

A combination of Type "A" and "BB" Bushings. For insulating cables passing through metal boxes or troughs

Third Party Certification:

 UL Listed: E-20933

 CSA Certified: 011584

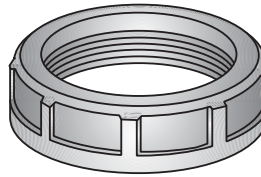
Applicable Third Party Standards:

UL Standard: 514B

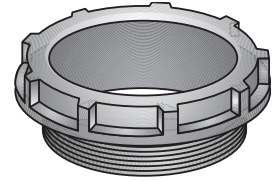
CSA Standard: C22.2 No. 18

Fed. Spec: W-F-408E

NEMA: FB-1



Type A

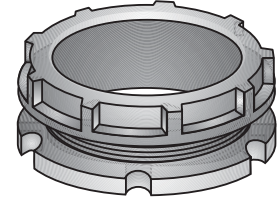


Type BB

Trade Size (inches)	Type A Catalog Number	Dimensions in Inches	
		Outside Dia.	Overall Height
1/2	A-50	1 1/8	1/2
3/4	A-75	1 3/8	1/2
1	A-100	1 3/4	5/8
1 1/4	A-125	2 1/8	3/4
1 1/2	A-150	2 3/8	3/4
2	A-200	2 7/8	3/4
2 1/2	A-250	3 3/8	7/8
3	A-300	4	7/8
3 1/2	A-350	4 3/8	7/8
4	A-400	5 1/8	7/8
5	A-500	6 1/4	1 1/8
6	A-600	7 3/8	1 1/8

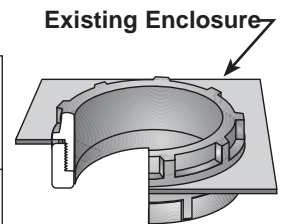
Trade Size (inches)	Type BB Catalog Number	Dimensions in Inches		
		Outside Dia.	Bushing Hole Dia.	Thread Length
1/2	BB-50	1 1/8	5/8	3/8
3/4	BB-75	1 3/8	3/4	3/8
1	BB-100	1 3/4	1	1/2
1 1/4	BB-125	2 1/8	1 1/4	1/2
1 1/2	BB-150	2 3/8	1 1/2	1/2
2	BB-200	2 7/8	2	1/2
2 1/2	BB-250	3 3/8	2 3/8	5/8
3	BB-300	4	3	5/8
3 1/2	BB-350	4 3/8	3 1/2	5/8
4	BB-400	5 1/8	3 3/8	5/8
5	BB-500	6 1/4	4 1/8	3/4
6	BB-600	7 3/8	5 1/8	3/4

Trade Size (inches)	Type BBL Catalog Number	Dimensions in Inches			Max Dia.
		Bushing Outside Dia.	Hole Dia.	Locknut Thread Length	
1/2	BBL-50	1 1/8	5/8	3/8	1 1/8
3/4	BBL-75	1 3/8	3/4	3/8	1 1/2
1	BBL-100	1 3/4	1	1/2	1 3/4
1 1/4	BBL-125	2 1/8	1 1/4	1/2	2 3/8
1 1/2	BBL-150	2 3/8	1 1/2	1/2	2 5/8
2	BBL-200	2 7/8	2	1/2	3 3/8
2 1/2	BBL-250	3 3/8	2 3/8	5/8	3 3/8
3	BBL-300	4	3	5/8	4 3/8
3 1/2	BBL-350	4 3/8	3 1/2	5/8	5
4	BBL-400	5 1/8	3 3/8	5/8	5 1/2
5	BBL-500	6 1/4	4 1/8	3/4	6 1/8
6	BBL-600	7 3/8	5 1/8	3/4	8



Type BBL

Trade Size (inches)	Type ABB Catalog Number	Dimensions in Inches					Max. Encl. Thick
		Outside Dia.	Hole Dia.	Thread Length	Shd. Ht. Type "BB"	Type "A"	
1/2	ABB-50	1 1/8	5/8	3/8	1/4	1/2	1/8
3/4	ABB-75	1 3/8	3/4	3/8	1/4	1/2	1/8
1	ABB-100	1 3/4	1	1/2	3/8	5/8	1/4
1 1/4	ABB-125	2 1/8	1 1/4	1/2	3/8	3/4	1/4
1 1/2	ABB-150	2 3/8	1 1/2	1/2	3/8	3/4	1/4
2	ABB-200	2 7/8	2	1/2	1/2	3/4	1/4
2 1/2	ABB-250	3 3/8	2 3/8	5/8	1/2	7/8	1/4
3	ABB-300	4	3	5/8	1/2	7/8	1/4
3 1/2	ABB-350	4 3/8	3 1/2	5/8	1/2	7/8	1/4
4	ABB-400	5 1/8	3 3/8	5/8	1/2	7/8	1/4
5	ABB-500	6 1/4	4 1/8	3/4	1/2	1 1/8	1/4
6	ABB-600	7 3/8	5 1/8	3/4	1/2	1 1/8	1/4



Type ABB