

# Zinc 2- Screw Connectors

## Type C

### For Oval Service Entrance Cables

#### Use:

To terminate oval Type SE or Type USE cable.

#### Features:

- Furnished with locknuts.
- Male hub threads NPS

#### Material/Finish:

Zinc Die Cast Body  
Zinc Plated Steel Clamp (C-750, C-1000)  
Zinc Die Cast Clamp (C-1250, C-1500, C-2000)

#### Third Party Certification:



C-750 and C-1000  
UL Listed: E37336



CSA Certified: 208044

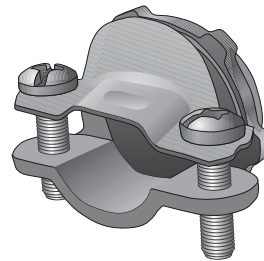
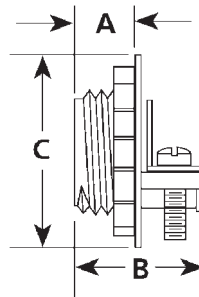
#### Applicable Third Party Standards:

UL Standard: 514B  
CSA Standard: C22.2 No. 18  
NEMA: FB-1

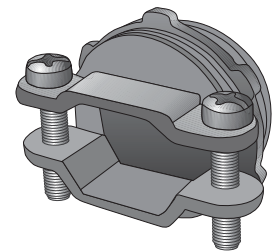
#### Note:

C-750 and C-1000 also listed for use with nonmetallic sheathed cable. See page IA22.

Trade Size (inches)	Catalog Number	Dimensions in Inches			Range
		A	B	C	
¾	C-750	0.42	0.94	0.91	8-3, 6-3 SE
1	C-1000	0.51	1.11	1.20	6-3, 4-3 SE
1¼	C-1250	0.60	1.31	1.87	3-3, 2-3 SE
1½	C-1500	0.59	1.33	2.01	3-2/0 SE
2	C-2000	0.74	1.57	2.62	3-4/0 SE



Type C-750 & C-1000



Type C-1250 thru C-2000

## Type C-R

### For Round Service Entrance Cables

#### Use:

To terminate round Type SE or Type USE cable to a knockout in dry location box or enclosure.

#### Material/Finish:

Zinc Die Cast Body  
Zinc Plated Steel Clamp

#### Third Party Certification:



C-1001-R through C-1501-R  
UL Listed: E37336



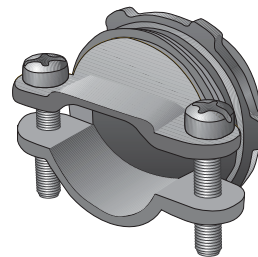
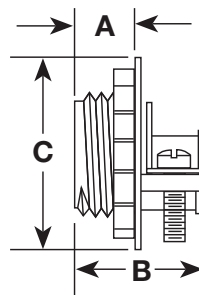
C-1001-R through C-1501-R  
CSA Certified: 208044

#### Applicable Third Party Standards:

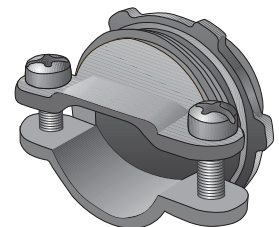
UL Standard: 514B  
CSA Standard: C22.2 No. 18  
NEMA: FB-1

Trade Size (inches)	Catalog Number	Dimensions in Inches			Range
		A	B	C	
1	C-1001-R	0.51	1.11	1.51	6-3, 4-3 SER
1¼	C-1251-R	0.60	1.25	1.82	3-3, 2-3 SER
1½	C-1501-R	0.64	1.44	2.06	3-2/0, 3-3/0 SER
2	C-2001-R*	0.74	1.59	2.58	4-4/0 SER

\* Not UL Listed or CSA Certified.



Type C-1001-R thru C-1501-R



Type C-2001