

Service Entrance Connectors

Type UF For Underground Cable

Use:

Gland type connector for sealing and terminating Type UF cable.

Material/Finish:

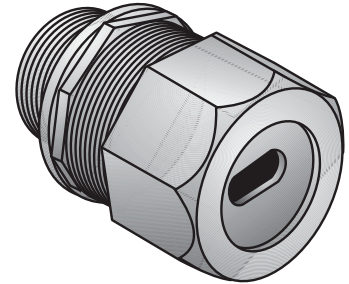
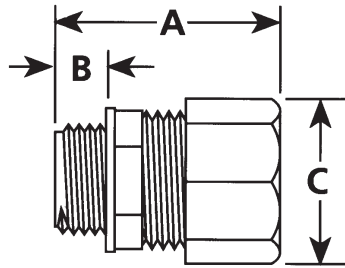
Steel/Zinc Plated

Third Party Certification:



UF-50

UL Listed: E-163167



Type UF

Trade Size (inches)	Catalog Number	Dimensions in Inches			Cable Range
		A	B	C	
½	UF-50	1.31	0.50	1.08	14-2 and 12-2 AWG
¾	UF-75*	1.51	0.52	1.33	14-3, 12-3, 10-3 and 8-2 AWG

*Not UL Listed

Type WC For Oval SE/U Cable

Use:

For terminating and sealing service entrance cable entering an enclosure or conduit hub.

Material/Finish:

Body: Zinc Die Cast

Compression Washer: Steel/Zinc Plated

Third Party Certification:

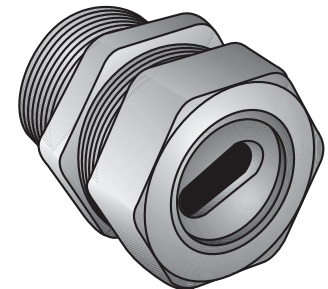
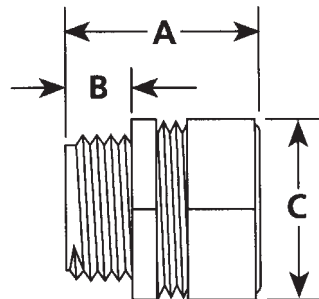


WC-1004 through WC-2004N, except
WC-1501 and WC-2001

UL Listed: E37336



WC-1004 through WC-2004N
CSA Certified: LR14489



Type WC

Trade Size (inches)	Catalog Number	Opening Maximum	Dimensions in Inches		
			A	B	C
1	WC-1004	0.50 x 0.80	1.56	0.55	1.50
1	WC-1006	0.44 x 0.70	1.56	0.55	1.50
1	WC-1008	0.40 x 0.63	1.56	0.55	1.50
1¼	WC-1252	0.57 x 0.85	1.99	0.61	1.84
1¼	WC-1253	0.51 x 0.85	1.99	0.61	1.84
1¼	WC-1252N	0.66 x 0.94	1.99	0.61	1.84
1½	WC-1501	0.70 x 1.19	2.18	0.62	2.15
1½	WC-1502	0.74 x 1.23	2.18	0.62	2.15
2	WC-2001	0.70 x 1.19	2.41	0.76	2.57
2	WC-2002	0.74 x 1.23	2.41	0.76	2.57
2	WC-2003	0.83 x 1.41	2.41	0.76	2.57
2	WC-2004	0.89 x 1.53	2.41	0.76	2.57
2	WC-2004N	1.00 x 1.58	2.41	0.76	2.57

**Connector Selection: SE dimensions are based upon average dimensions given by various manufacturers of cable. Individual manufacturers vary. Actual dimensions must be checked and proper fittings selected based upon "grommet range minimum" column.