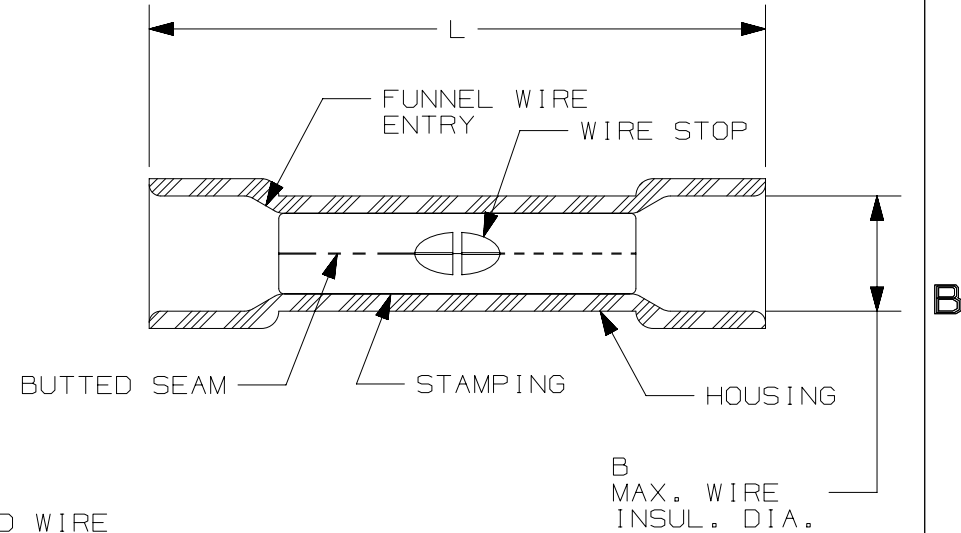


THIS COPY IS PROVIDED ON A RESTRICTED BASIS AND IS NOT TO BE USED IN ANY WAY DETRIMENTAL TO THE INTERESTS OF PANDUIT CORP.

PANDUIT PART #	WIRE SIZE AWG [mm <sup>2</sup> ]	COLOR	DIMENSIONS in. [mm]	
			L± .03 [0,8]	B± .01 [0,3]
ESV18BX	#22-18 [0,5-1,0]	RED	1.03 [26,2]	.17 [4,3]
ESV14BX	#16-14 [1,5-2,5]	BLUE	1.04 [26,4]	.20 [5,1]
ESV10BX	#12-10 [4,0-6,0]	YELLOW	1.18 [30,0]	.25 [6,4]



NOTES:

- USED FOR:
  - A. SOLID OR STRANDED COPPER WIRE
  - B. 221°F [105°C] MAX OPERATING TEMPERATURE
  - C. 600V MAX VOLTGE RATING
  - D. ESV10BX 300V MAX VOLTAGE RATING WITH 10 AWG SOLID WIRE
- INSTALLATION TOOLS: CT-100A, CT-160, CT-260, CT-1550, CT-1551, CT-600A (CT-550CH), CT-2500 (CT-2550CH)
  - A. #22-18 AWG [0,5-1,0 mm<sup>2</sup>]: CT-100A, CT-160, CT-260, CT-400, CT-600A (CT-550CH), CT-2500 (CT-2550CH)
  - B. #16-14 AWG [1,5-2,5 mm<sup>2</sup>]: CT-100A, CT-160, CT-260, CT-400, CT-460, CT-600-A, CT-2500
  - C. #12-10 [4,0-6,0 mm<sup>2</sup>] STRANDED AND #12 AWG SOLID COPPER WIRE WITH CT-1550 & CT-1551 TOOLS: CT-100A, CT-160, CT-260, CT-460, CT-600-A (CT-550CH), CT-2500 (CT-2550CH)
- WIRE STRIP LENGTH: 5/16" <sup>+1/32</sup><sub>-0</sub> [7,9mm <sup>+0,8</sup><sub>-0</sub>]
- MATERIAL:
  - A. STAMPING (#22-18 & #16-14): .03" [0,8] THK COPPER, TIN PLATED
  - B. STAMPING (#12-10): .04" [1,0] THK COPPER, TIN PLATED
  - C. HOUSING: VINYL
- SEE [www.panduit.com](http://www.panduit.com) FOR PACKAGE QUANTITIES INDICATED BY PART NUMBER SUFFIX
- DIMENSIONS IN BRACKETS ARE METRIC EQUIVALENT



LISTED  
587H  
E52164



CERTIFIED  
LR31212

TITLE <b>STRONGHOLD BUTT SPLICE, EXPANDED DIAMETER VINYL INSULATED, BUTTED SEAM #22-10 AWG</b>	
CUSTOMER DRAWING	
ITEM REVISION NAME 00123SHC/00	<b>PANDUIT</b>
DATASET FILE NAME 00123SHC_DC/00A	
UNLESS OTHERWISE SPECIFIED, DIMENSIONAL TOLERANCES ARE: IN [mm] .x ± .1 [2.54]      .xxx ± .005 [0.127] .xx ± .01 [0.25]      ANGLES ± 5°	
DRAWING NUMBER: SH41181	
THIRD ANGLE PROJECTION	
DRAWN BY TMR	DATE 10.10.17
CHK JHNU	SCALE N.T.S.
REV	DATE
BY	CHK
APR	DESCRIPTION
00	10.10.17
TMR	JHNU
RGB	DRAWING RELEASED
00123SH	ECN
SHT 1 OF 1	SIZE A

D10100DA/15