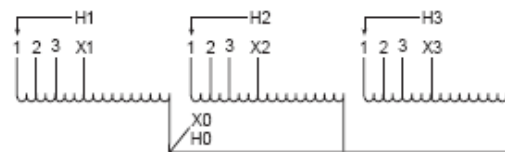
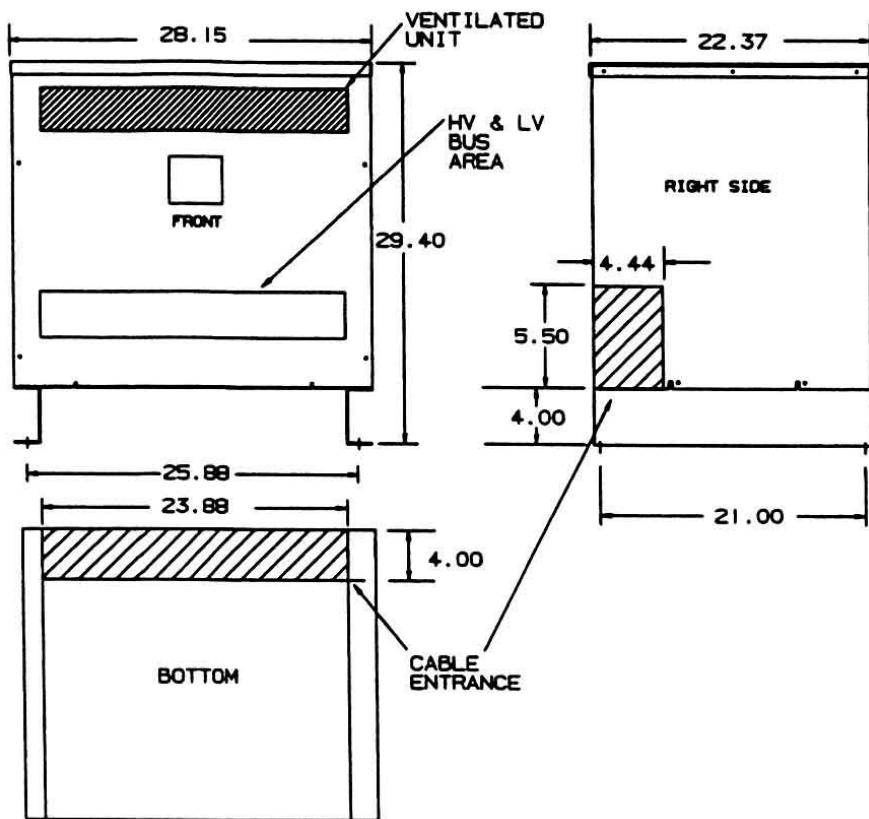


# Revisions



Primary Volts	Alt Rating	Connect Primary Lines To	Inter-Connect	Connect Secondary Lines To
600	480	H1, H2, H3	1	
570	456	H1, H2, H3	2	
540	432	H1, H2, H3	3	
Secondary Volts				
480	380			X1, X2, X3
277 1 phase	220 1 phase			X1 to X0 X2 to X0 X3 to X0



Type No. T-2A-52715-1

KVA	CATALOG NUMBER	VOLTAGE		WEATHER SHIELD	WEIGHT	PHASE	FREQ.
		HIGH	LOW				
225	<b>T-2A-52715-1</b>	600 (Auto)	480 (Auto)	WS-A-2	600 Lbs	3 $\phi$	60 Hz

### TYPICAL PERFORMANCE DATA

Winding Rise	150°C	Regulation @ 100% PF		Impedance		Typical Efficiency	
Insulation	220°C	NEMA Standard		Windings		No Load Losses	
Sound Level	55 dB			AL		Total load Losses	