

Carlon® Round Floor Box Systems – three-way versatility for power, data, and communications.

Carlon round floor boxes give you the same cost-saving advantages over metal boxes as our rectangular boxes. By letting you combine power, data, and communications in the same box, you can dramatically reduce your installation time and cost compared to other nonmetallic boxes. In addition, multi-use covers mean fewer SKUs to deal with and greater jobsite flexibility to increase your savings further. Take a closer look at all their advantages for yourself.

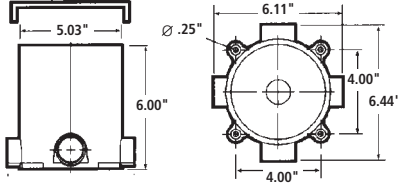
Features

- Nonmetallic PVC construction, watertight gasket, and corrosion-resistant hardware assure long life and reliable performance even in harsh and/or corrosive environments.
- Covers are available for a variety of applications.
- The same box depth simplifies ordering and reduces inventory.
- For tile and carpet applications.
- Cover options include: Brass, Stainless Steel, and Nonmetallic (Ivory, Caramel, Taupe, Slate and Brown).
- Concrete tight and suitable for any on grade/below grade application; concrete or wood floor construction approved.
- Y-connector (E972Y) allows you to feed parallel runs of 3/4" conduit or to feed in/out from the same side for increased wiring flexibility and faster installation.
- PVC molded ports and reducer plugs included.
- Accepts 1/2", 3/4", and 1" conduit, tubing or raceway.
- UL scrub water tested, approved for all types of finish flooring.



Specifications

Round Floor Box



Carlson Round Floor Boxes allow for various thickness of concrete pours. Trim out is easy – just use a handsaw to cut off box at desired height to accommodate carpet, tile, or other flooring. Carlson leveling ring guarantees a level top every time, even if the box is tipped slightly during the pouring process.

Part No.	Internal Volume (cu. in.)	Min. Concrete Depth	Hubs	Reducer Plugs	Std. Ctn. Qty.	Std. Ctn. Wt. lbs.
◆ E971FB	90.0 (15.5 per inch of Depth)	3 1/2"	(2) 1" and (2) 3/4"	(2) 1" x 3/4" and (2) 3/4" x 1/2"	10	15.6

Accessories

Multi-Service Divider Kit



Multi-service divider kit for separate power, data, and communications compartments provides unbeatable flexibility and money-saving installation speed. For use with nonmetallic boxes only.

Part No.	Std. Ctn. Qty.	Std. Ctn. Wt. (lbs.)
◆ E973K	10	3

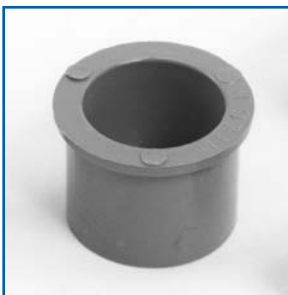
3/4" Y Fitting



The 3/4" Y Fitting provides for in and out service from a single 1" port, and allows for two 3/4" parallel conduit runs to adapt into a single conduit body port.

Part No.	Std. Ctn. Qty.	Std. Ctn. Wt. (lbs.)
E972Y	10	2.1

Reducer Plugs



Part No.	Size	Std. Ctn. Qty.	Std. Ctn. Wt. (lbs.)
E971C	3/4" x 1/2"	100	2.1
E971D	1" x 3/4"	100	3.2



Nonmetallic Covers



Caramel

Slate

Ivory

Taupe

Brown

U.S. Patent 6,450,353

Features

- High impact resistant thermoplastic
- Compatible with standard NEMA Duplex, and 1 1/4" NPS receptacles
- Drill points (3/8") provided for low voltage cable pass throughs
- 1 1/4" NPS plugs may be modified to accept smaller fittings (3/8", 1/2", and 3/4")
- For tile and carpet applications
- UL scrub water tested, approved for all types of finish flooring

Duplex Covers



Part No.	Color	Description	Std. Ctn. Qty.	Std. Ctn. Wt. (lbs.)
E97DSI	Ivory	Duplex Cover	10	5.2
E97DSC	Caramel	Duplex Cover	10	5.7
E97DST	Taupe	Duplex Cover	10	5.7
E97DSS	Slate	Duplex Cover	10	5.6
E97DSB	Brown	Duplex Cover	10	5.8

1 1/4" NPS Covers



Part No.	Color	Description	Std. Ctn. Qty.	Std. Ctn. Wt. (lbs.)
E97SSRB	Brown	NPS Cover	10	3.8
E97SSRC	Caramel	NPS Cover	10	3.8
E97SSRS	Slate	NPS Cover	10	3.8

Clear Cover Carpet Ring

Part No.	Color	Std. Ctn. Qty.	Std. Ctn. Wt. (lbs.)
E97CCR	Clear	10	1.2

Round Floor Box Covers – Brass & Stainless Steel

NEW!
Stainless Steel
Covers



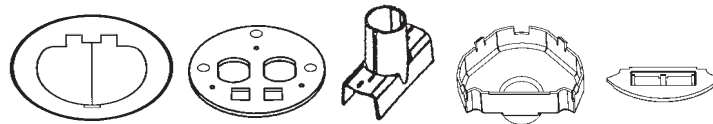
Features



U.S. Patent 6,179,634

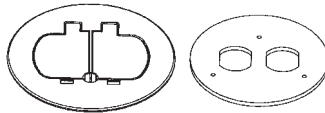
- Screws concealed under doors
- Rugged construction
- Coated with a light lacquer finish for extra protection
- Resistance to wear – suited for high traffic areas
- Gasketed for watertight applications
- Available in four styles – Single Door, Two Door, NPS Opening, and Two Door Dual Service
- For tile and carpet applications
- UL scrub water tested

Two Door Dual Service (Divider Kit included)



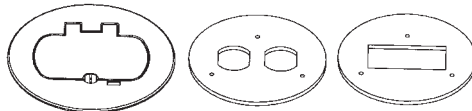
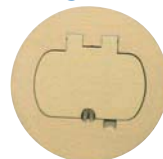
Part No.	Cover	Devices	Std. Ctn. Qty.	Std. Ctn. Wt. (lbs.)
E97BR2D	Brass	Duplex and Two Data Ports	5	9.2
E97SS2D	Stainless Steel	Duplex and Two Data Ports	5	9.1

Two Door



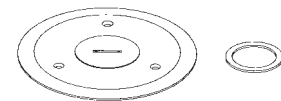
Part No.	Cover	Devices	Std. Ctn. Qty.	Std. Ctn. Wt. (lbs.)
E97BR2	Brass	Duplex	5	7
E97SS2	Stainless Steel	Duplex	5	7.7

Single Door



Part No.	Cover	Devices	Std. Ctn. Qty.	Std. Ctn. Wt. (lbs.)
E97BR	Brass	GFCI and Duplex	5	7
E97SS	Stainless Steel	GFCI and Duplex	5	7.9

NPS Opening



Part No.	Cover	Devices	Std. Ctn. Qty.	Std. Ctn. Wt. (lbs.)
E97BRG	Brass	1-1/4" Outlet and Single Receptacle	5	7.5
E97SSG	Stainless Steel	1-1/4" Outlet and Single Receptacle	5	8.1

Metal Cover Adapter Ring



Part No.	Devices	Std. Ctn. Qty.	Std. Ctn. Wt. (lbs.)
E97ABR2	One-Piece Metal Cover Adapter	10	3.3

NOTE: Carlon metal cover adapter ring (E97ABR2) is required with these covers (sold separately)