

# FVS long twin tube fluorescent luminaires

Cl. I, Div. 2, Groups B, C, D  
Cl. II, Div. 1, Groups E, F, G  
Cl. II, Div. 2, Groups F, G  
Cl. III & Simultaneous Presence

Marine & Wet Locations  
3, 3R, 4, 4X; IP66

5L

## Applications:

FVS long twin tube fluorescent luminaires are used:

- Where low mounting heights or limited mounting room exists
- For task oriented lighting
- Where a cool, efficient light source is required
- In areas that require lamps to reach full illumination immediately
- In industrial and chemical processing
- In pulp and paper facilities
- In waste or sewage treatment facilities
- In non-hazardous commercial and industrial areas
- In food and pharmaceutical plants where a non-glass lens is required
- Where fluorescent lighting has been preferred, but unavailable due to limited space and practicality

## Features:

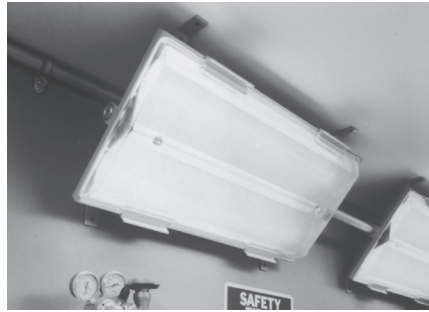
- Compact, lightweight, low profile design is ideal for confined areas and tight corners
- Reaches full illumination immediately and delivers light output equivalent to fixtures twice its size
- Fast-Latch™ closure provides quick and easy access for relamping and maintenance – no tools necessary
- Silicone sealing gasket provides exceptional watertight and dusttight bond, providing excellent performance in wet and corrosive environments
- Power disconnect switch (Eaton's Crouse-Hinds series ESWP) automatically cuts power to the lamps and ballast when the lens is opened
- Shatter-resistant polymeric lens (0.125 thick) provides environmental and corrosion protection
- Available in UNV (120-277) and 347, 50/60 Hz voltages
- Two-lamp fixture, uses single-ended 40 watt lamps
- Multiple mounting capability
- Energy saving electronic ballast is standard

## Size ranges:

- All luminaires are 24.00" L x 12.00" W x 3.12" H
- Conduit entrances are 3/4"

## Electrical ratings:

- 120-277 VAC, 50-60 Hz
- 347V, 60 Hz
- Two 40W long twin tube lamps



## Certifications and compliances:

### NEC/CEC:

- Class I, Division 2, Groups B, C, D
- Class II, Division 1, Groups E, F, G (suffix S813)
- Class II, Division 2, Groups F, G
- Class III & Simultaneous Presence (Class I and Class II)

### Note: Aiming limitations

- Class II, Class III & Simultaneous Presence
- Aim down to horizontal
- Cannot aim up

### UL standards:

- UL844 – Hazardous (Classified) Locations
- UL1598 – Luminaires
- UL1598A – Marine Locations

### CSA standard:

- C22.2 No. 137

## Standard materials:

- Housing – corrosion-resistant die cast copper-free aluminum
- Lens – shatter-resistant nylon; polycarbonate (optional, suffix S813)
- Gasket – silicone rubber
- Hinges and closure hardware – extruded aluminum with stainless steel pivots

## Standard finishes:

- Housing – epoxy powder coat
- Hinges and closure hardware – anodized
- Reflector – highly specular aluminum

## Photometrics:

- Complete photometrics can be found at [www.crouse-hinds.com/photometrics](http://www.crouse-hinds.com/photometrics)

## Temperature performance data:

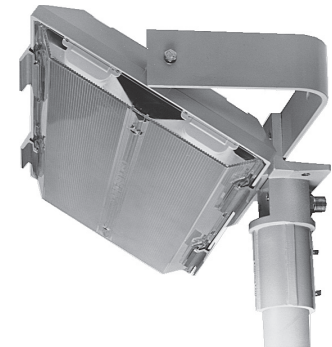
Style	Ambient temp. °C	Class I, Div. 2	Class II		Supply wire °C	Minimum operating temp.
			See aiming limitations	Simultaneous presence		
All	40	T3C	T6	T3C / T6	75	-18°C (0°F)
All	55	T3C	–	–	75	-18°C (0°F)

## Options:

- | Description   | Suffix                 |
|---|------------------------|
| • Fused – to protect ballast under abnormal line conditions.....                        | <b>S658</b>            |
| <i>Not available on CSA certified fixtures<br/>Not suitable for marine applications</i> |                        |
| • Fixture supplied with two F40BX/SPX35 lamps.....                                      | <b>S714</b>            |
| • Corro-free epoxy finish, internal and external.....                                   | <b>S753</b>            |
| • Tamperproof .....   | <b>Contact factory</b> |

## Accessories (ordered separately):

- | Description   | Cat. #        |
|---|---------------|
| • Trunnion mount kit .....  | <b>FVS-K5</b> |
| <i>Permits vertical mounting of luminaire on a beam when used with a standard beam clamp<br/>Can be mounted directly to a wall or ceiling<br/>Can be pole mounted when used in conjunction with a SFA6 slipfitter adapter (ordered separately)<br/>Constructed from copper-free aluminum<br/>Supplied with a CGB cord connector</i> |               |
| • Slipfitter adapter to be used with trunnion arm.....  | <b>SFA6</b>   |



FVS with trunnion arm and slipfitter

## Weight:

Type	Luminaire without lamps (lbs.)
Standard 2-lamp FVS	12.00

# FVS long twin tube fluorescent luminaires

Cl. I, Div. 2, Groups B, C, D  
 Cl. II, Div. 1, Groups E, F, G  
 Cl. II, Div. 2, Groups F, G  
 Cl. III & Simultaneous Presence

Marine & Wet Locations  
 3, 3R, 4, 4X; IP66

5L

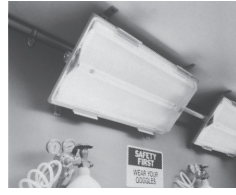
Luminaire includes all necessary provisions for these installations:



Ceiling mount



Pendant mount



Corner mount



Horizontal wall mount



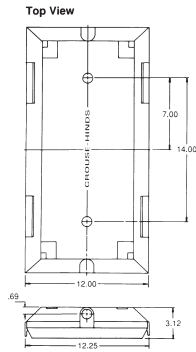
Vertical wall mount

## Ordering information:

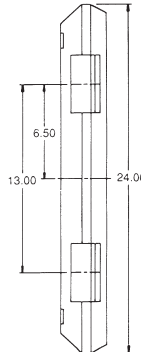
Voltage	Lamp watts	Hub size (4)	Cat. #	Cat. # With Class II, Division 1 suitability
120-277 (50 or 60 Hz)	40	3/4"	FVS20/UNV	FVS20/UNV S813
347 (50 or 60 Hz)	40	3/4"	FVS23	FVS23 S813

## Dimensions:

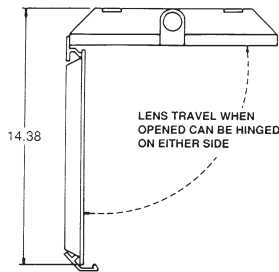
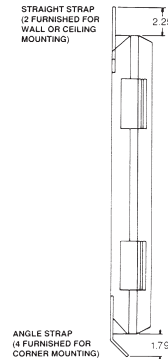
FVS with trunnion arm: 26.25" L x 13.50" W x 3.12" H



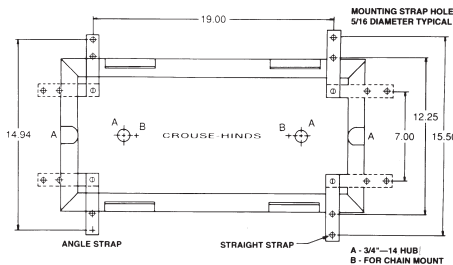
Top view



Side view



FVS with lens open



FVS showing mounting strap positioning