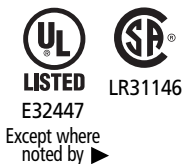


Rigid Nonmetallic Conduit – Fittings (for use with Schedule 40 & 80 conduit)

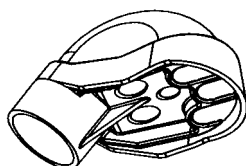
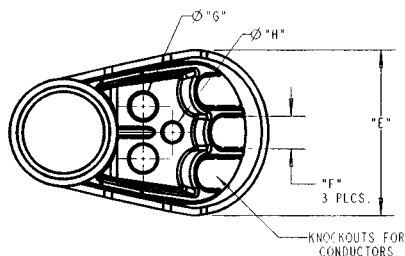
Caps



Service Entrance Caps



Part No.	Size	Std. Ctn. Qty.	Dimensions (in.)			
			E	F	G	H
E998D	1/2	5	1.76	.45	.45	–
E998E	3/4	20	1.76	.45	.45	–
E998E-CAR	3/4	5	1.76	.45	.45	–
E998F	1	15	2.26	.59	.58	–
E998F-CAR	1	5	2.26	.59	.58	–
E998G-CAR	1 1/4	5	3.52	.74	.71	.50
E998H-CAR	1 1/2	5	3.52	.74	.71	.50
E998J-CAR	2	5	4.26	.83	.78	.56
E998K-UPC	2 1/2	2	7.47	1.70	1.31	1.00
E998L	3	2	7.47	1.70	1.31	1.00
E998N	4	2	10.45	2.25	1.88	1.31



End Caps



Part No.	Size	Std. Ctn. Qty.	Std. Ctn. Wt. (lbs.)
▶ E958D	1/2	100	3
▶ E958E	3/4	100	4
▶ E958F	1	75	5
▶ E958G	1 1/4	40	4
▶ E958H	1 1/2	30	4
▶ E958J	2	25	5
▶ E958K	2 1/2	10	4
▶ E958L	3	10	5
▶ E958N	4	5	17
▶ E958P	5	5	11
▶ E958R	6	5	13

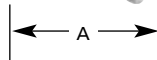
PVC Riser Caps



Part No.	Size	Std. Ctn. Qty.	Std. Ctn. Wt. (lbs.)
▶ E935J	2	25	3
▶ E935L	3	25	5
▶ E935N	4	25	7
▶ E935P	5	25	35
▶ E935R	6	10	7

Offsets

Meter Offset



Part No.	Size	Std. Ctn. Qty.	Offset	A
▶ E995G	1 1/4	15	0.758	4.230
▶ E995J	2	8	0.684	4.270

Offset



Part No.	Size	Std. Ctn. Qty.	Std. Ctn. Qty. Wt. (lbs.)
▶ E994D	1/2	25	3
▶ E994E	3/4	25	3
▶ E994F	1	50	12

End Bells

End Bells



Part No.	Size	Std. Ctn. Qty.	Std. Ctn. Wt. (lbs.)
E997F	1	50	2.6
E997G	1 1/4	35	2.5
E997H	1 1/2	30	2.5
E997J	2	40	5.0
E997K	2 1/2	30	2
E997L	3	50	10
E997M	3 1/2	40	11
E997N	4	30	16
▶ E997P	5	15	8
▶ E997R	6	10	7
▶ E997T	8	3	15

Fabricated End Bells Schedule 40



Part No.	Size	Std. Ctn. Qty.	Std. Ctn. Wt. (lbs.)
▶ E949J5	2" x 5"	50	10
▶ E949J6	2" x 6"	25	12
▶ E949JN	2" x 4"	25	7
▶ E949JX	2" x 8"	12	7
▶ E949LR	3" x 6"	20	21
▶ E949N5	4" x 5"	20	2
▶ E949NR	4" x 6"	15	21
▶ E949R5	6" x 5"	12	27
▶ E949RX	6" x 8"	6	17