

EMT FITTINGS

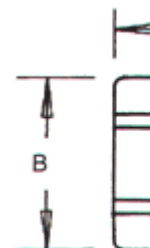


L20

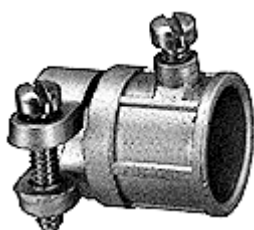
EMT 2-PIECE connectors

Zinc die-cast.

CATALOG NUMBER	UPC/DCI/NAED MFG #01 8997	TRADE SIZE	K.O. SIZE	UNIT PKG	STD PKG	DIM A	DIM B
L20	32000	1/2	1/2	50	250	.770	1.107
L202	32020	3/4	3/4	25	100	.875	1.285



E20643 L

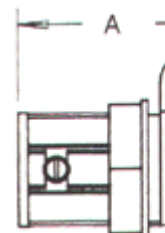


860

COMBINATION COUPLING

EMT to Flex. Zinc die-cast.

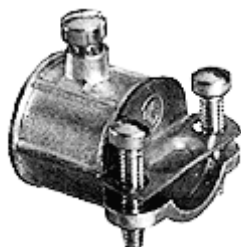
CATALOG NUMBER	UPC/DCI/NAED MFG #01 8997	EMT SIZE	FLEX SIZE	UNIT PKG	STD PKG	DIM A	DIM B	CABLE RANGE
*860	00860	1/2	3/8	50	500	1.300	1.156	.530-.620
861	00861	1/2	1/2	25	250	1.645	1.363	.850-.910
862	00862	3/4	3/4	25	100	1.975	1.553	1.100-1.130



* CSA Only



E20643 L

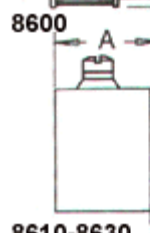
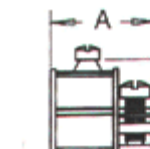


8600

COMBINATION COUPLING

Set-screw EMT to Flex. Zinc die-cast.

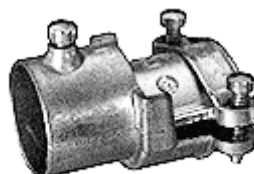
CATALOG NUMBER	UPC/DCI/NAED MFG #01 8997	EMT SIZE	FLEX SIZE	UNIT PKG	STD PKG	DIM A	DIM B	CABLE RANGE
*8600	08600	1/2	3/8	50	500	1.162	1.090	.530-.620
8610	08610	1/2	1/2	50	500	1.736	1.170	.850-.910
8620	08620	3/4	3/4	25	100	1.934	1.360	1.100-1.130
8630	08630	1	1	10	40	2.290	1.625	1.255-1.375



* CSA Only



E20643 L



8610-8630