

# “Jones Bond”<sup>TM</sup> system

## DIRECT-BURIAL BONDING & GROUNDING

**J32-DB**  
New Size  
Rebar Clamp

- Ufer grounding / Concrete-encased electrode
- Swimming pools / spas
- Agricultural / livestock building
- Replaces exothermic welding



PATENT PENDING



The only clamp specifically designed for copper-to-rebar connections.



# GREAVES

**2005 Code requires bonding all “present” concrete-encased electrodes (Ufer grounding) 250.52 (A)(3).**



## "Jones Bond" system

### BONDING & GROUNDING



Ufer grounding / Swimming pools / spas, Agricultural buildings and other difficult environments

### JONES REBAR CLAMP

Use to connect solid copper bond/ground wire to rebar  
Compact for easy coverage in gunite pool wall  
For use on copper wire only

CATALOG NUMBER	WIRE RANGE	REBAR SIZE	
		NO.	INCH
J 29-DB	8 - 6 SOL	#3	3/8
J 30-DB	8 SOL - 4 STR	#4	1/2
J 31-DB	6 SOL - 2/0 STR	#5	5/8
J 32-DB	6 SOL - 4/0 STR	#4,5,6	1/2, 5/8, 3/4



Patent Pending

### Direct Burial



UL Listed and CSA Certified for direct burial in earth or concrete. Not for use on epoxy coated rebar.

### BEAVER TOOTH LUG™ Lay-in Lug

Use to connect copper/ground wire to equipment  
Copper body, stainless steel screw  
For use on copper wire only

CATALOG NUMBER	WIRE RANGE	MOUNTING BOLT SIZE
BTL 4-DB*	#4 - 14 AWG	#10
BTL 414-DB*	#4 - 14 AWG	#1/4



\* For tin-plating, add suffix "P". Tin plate for use on aluminum pool structure.

### Direct Burial

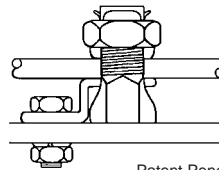


UL Listed 486D, CSA Certified for direct burial in earth or concrete

### BUGLUG™ Lay-in Lug

Use to connect copper/ground wire to equipment  
Heavy duty silicon bronze and copper, tin plated  
For use on copper wire only

CATALOG NUMBER	WIRE MAX	MOUNTING BOLT SIZE
BL 6	#6	#10
BL 4	#4	1/4
BL 2	#2	1/4
BL 1/0	#1/0	5/16



Patent Pending

BL Series is tin-plated for use on aluminum pool structure. Use of oxide-inhibitor is recommended.

### Direct Burial



CSA NRTL/C Certified for direct burial in earth and concrete

### PIPE/REBAR CLAMP

Cast bronze body  
Silicon bronze screws  
For use on copper wire only  
Lay-in feature allows continuous run installation

CATALOG NUMBER	PIPE SIZE IPS	REBAR SIZE		CONDUCTOR RANGE MIN - MAX
		SIZE	INCH	
G1R-DB	1/2 - 1"	#3 - #8	3/8 - 1"	#10 - 2 AWG



### Direct Burial



UL listed for direct burial in earth or concrete on copper wire.

### PIPE CLAMP

Cast bronze body  
Silicon bronze screws  
For use on copper wire only

CATALOG NUMBER	PIPE SIZE IPS	CONDUCTOR RANGE MIN - MAX



### Direct Burial



UL Listed and CSA Certified for direct burial in earth and concrete

### MESH-BUGS™

Use to connect copper conductor to wire mesh  
Copper-alloy bronze construction  
Sizes available for rolled (#10) and heavy (#6) mesh  
UL listed for direct burial in earth and concrete

CATALOG NUMBER	MESH WIRE SIZE	COPPER COND. RANGE (AWG)
A2-DB	#10	#12STR - #8STR
A5-DB	#6	#8SOL - #4STR



### Direct Burial



UL listed for direct burial in earth or concrete on copper wire.

### GROUND ROD CLAMP

Cast bronze body  
Silicon bronze bolt  
For use with copper wire only  
Direct burial in earth and concrete

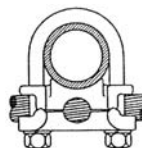


### Direct Burial

UL Listed and CSA Certified for direct burial in earth and concrete

### U-BOLT CLAMP

Use to connect wire to pipe, rod, or fence posts parallel or perpendicular to pipe  
Cast bronze body  
Silicon bronze hardware  
For use on copper wire only



### Direct Burial

CSA Certified for direct burial in earth and concrete



### STAINLESS STEEL HARDWARE

Use to mount BTL4-DB and BL Series lay-in lugs to equipment  
Sets of stainless steel hardware  
Available in #10-24 and 1/4-20 sizes



### Direct Burial

### GREAVES CORPORATION

www.greaves-usa.com  
Guilford, Connecticut 06437  
Phone 203-453-4304 Fax 203-453-8343