

**TWO-GANG BOXES
DIE CAST ALUMINUM**



Applications

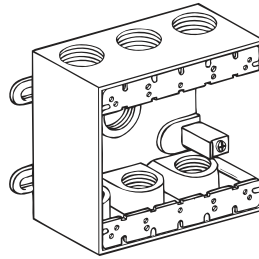
- For use in branch circuit wiring in wet, damp, or dry locations
- Can be used as a weatherproof junction box, or as a housing for receptacles, switches, and GFCI's

Product Features

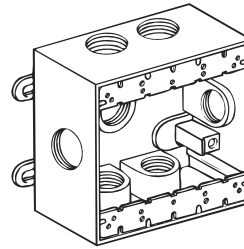
- Seamless die cast aluminum construction
- Reinforced connector outlets
- State-of-the-art powder coat finish
- Eight box mounting options with detachable plugs provided
- Two closure plugs included
- Ground screw installed in boxes
- Multi-lingual instructions in each package

Compliances

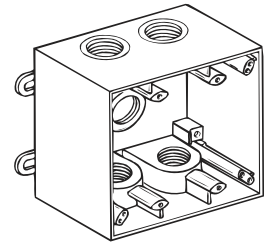
- – Standard 514A
- – C22.2 No. 18
- NEMA 3R Rated



5340-0, 5348-0



5338-0, 5346-0



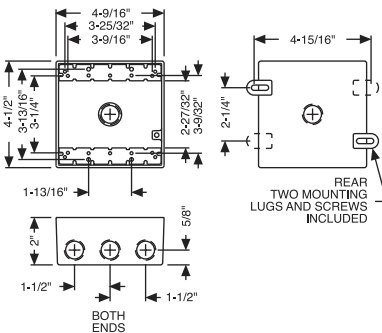
5388-0, 5389-0

ORDERING INFORMATION - DIMENSIONS

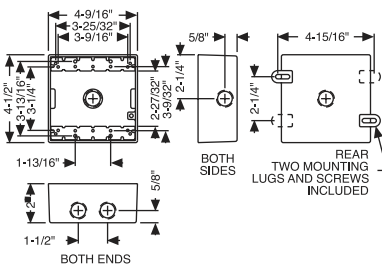
2" DEEP, WITH LUGS - SEVEN THREADED OUTLETS - 4-1/2" x 4-9/16"						
CATALOG NUMBER	CUBIC IN.	DESCRIPTION		PKG. TYPE	STD. PKG.	UPC BAR CODE
		COLOR	OUTLETS			
5340-0	28.0	Gray	7-1/2"	Shrink	12	
5348-0	28.0	Gray	7-3/4"	Shrink	12	
5338-0	29.0	Gray	7-1/2"	Shrink	12	
5346-0	29.0	Gray	7-3/4"	Shrink	12	

Includes two closure plugs

**TWO-GANG BOXES WITH 7 OUTLETS
CAT. NOS. 5340-0, 5348-0**



CAT. NOS. 5338-0, 5346-0



2-5/8" DEEP, WITH LUGS - FIVE THREADED OUTLETS - 4-1/2" x 4-9/16"						
CATALOG NUMBER	CUBIC IN.	DESCRIPTION		PKG. TYPE	STD. PKG.	UPC BAR CODE
		COLOR	OUTLETS			
5388-0	36.8	Gray	5-3/4"	Shrink	9	
5389-0	36.5	Gray	5-1"	Shrink	9	

Includes two closure plugs

**TWO-GANG BOXES WITH 5 OUTLETS
CAT. NOS. 5388-0, 5389-0**

