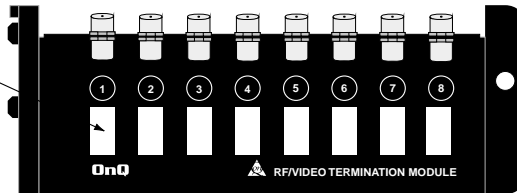


"WHITE FIELDS" ARE PROVIDED FOR THE PURPOSE OF RECORDING "ROOM LOCATIONS"



363915-01

Figure 1

1. Introduction

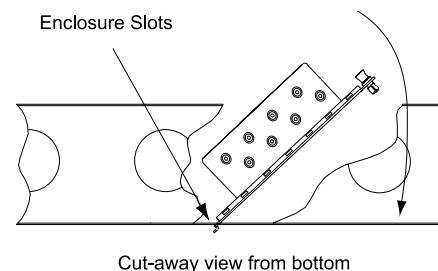
The OnQ 8 Port RF Interface Module, Part Number 363915-01, provides for the management and distribution of RF signals (Cable TV, off air, satellite and internal signals) on coaxial cable throughout the house. When combined with OnQ Video Modules, the RF Interface allows for the combining and distribution of these signals. The RF Interface also provides a convenient location for the termination of any unused coaxial cable to be used in future applications. The modules can be mounted in OnQ Raised Rail or Flat Rail Service Center Enclosures.

2. Description

The RF Termination Module has low-loss "F" style fittings for connecting all incoming and outgoing signals. The module allows for 8 signal inputs/outputs. The 8 Port RF label allows for the identification of "room locations" on the front of the module (**Figure 1**).

3. Installation

- A. Mounting in enclosure (**Figure 2**).
- 1) Align tabs on module with slots on rail of enclosure.
 - 2) Insert tabs by angling module away from the back of the enclosure and sliding forward.
 - 3) Rotate the module and insert fasteners on module into corresponding holes on rail of enclosure. (Plunger must be in the pulled out position for fastener to engage hole.)
 - 4) Push plunger in to lock module. Pull on module to assure module is locked properly in place.



NOTE: Recommended location for RF Termination Module is upper right side; however, module may be mounted in any available space.

NOTE: Do not bend cable in less than about 2 inch radius.

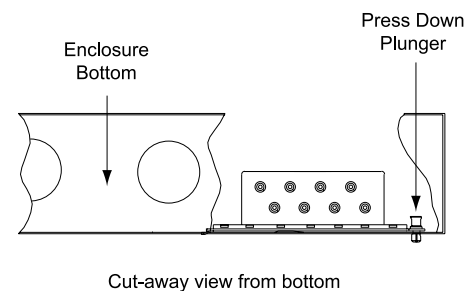


Figure 2

B. Cable Connections

- 1) Identify cable(s) and route to fitting(s) on module. In routing cable, allow slack for bundling cables to the side. Trim cable to allow loose loop of cable to the connection.
- 2) Attach a Series 6 "F" connector to the cable. Connect to fitting on module and finger-tighten.
- 3) Attach RG6 cables from module to desired locations in enclosure.