

Grässlin Mechanical Time Switches

Grässlin Enclosed Timer Module, 24-Hour or 7-Day



GMXSW-O-120

GMX Series

21 A, General Purpose, 1-Circuit Electronic Time Switches

The GMX series time switches are universal mechanical time switches. They are a low cost alternative for applications that do not require more than 21 A or 2 HP @ 240 VAC. The timer is mounted in a UL Type 1 indoor or Type 3R outdoor plastic enclosure. The GMX is a light-duty commercial time switch ideal for 24, 120 or 208/240 VAC single-phase general applications.

Applications

- Lighting Control • HVAC • Pumps/Motor/Fan Control
- General Electrical Circuits • Commercial Refrigeration

Features

- 21 A SPDT Switch
- UL Type 1 indoor or Type 3R outdoor plastic enclosure
- Manual 3-way override
- Captive trippers with 15-minute intervals on 24-hour models and 2-hour intervals on 7-day models
- True clock face, easy to set
- Finger-safe terminals
- Enclosure provides space for field-added contactor or other accessories
- Synchronous drive or quartz drive ("Q" models) with self-charging battery backup



RoHS
Compliant
2002/95/EC



#E10694

Model # Synchronous	Model # Quartz w/ Battery Backup (7-Day Carry-over)	Voltage	MIN ON/OFF Time	Enclosure
24-Hour				
GMXST-I-120	GMXQT-I-120*	120 VAC, 60 Hz	ON/OFF 15-Minutes	Indoor Type 1 Plastic
GMXST-I-240	**	208/240 VAC, 60 Hz	ON/OFF 15-Minutes	Indoor Type 1 Plastic
GMXST-O-24	**	24 VAC, 60 Hz	ON/OFF 15-Minutes	Outdoor Type 3R Plastic
GMXST-O-120	GMXQT-O-120*	120 VAC, 60 Hz	ON/OFF 15-Minutes	Outdoor Type 3R Plastic
GMXST-O-240	**	208/240 VAC, 60 Hz	ON/OFF 15-Minutes	Outdoor Type 3R Plastic
7-Day				
GMXSW-I-120	**	120 VAC, 60 Hz	ON/OFF 2-Hours	Indoor Type 1 Plastic
GMXSW-O-24	**	24 VAC, 60 Hz	ON/OFF 2-Hours	Outdoor Type 3R Plastic
GMXSW-O-120	GMXQW-O-120 *	120 VAC, 60 Hz	ON/OFF 2-Hours	Outdoor Type 3R Plastic
GMXSW-O-240	GMXQW-I-240 *	208/240 VAC, 60 Hz	ON/OFF 2-Hours	Outdoor Type 3R Plastic
**	GMXQW-I-24*	12-24 VAC, 50/60 Hz	ON/OFF 2-Hours	Indoor Type 1 Plastic

*Quartz models operate on 12-24 VAC/VDC, 120 or 208/240VAC, and 50/60 Hz and are Title 20 listed.

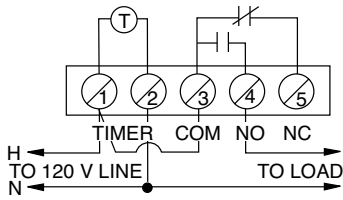
**Considered upon request

Ratings	
Supply Voltage	See Model Chart
Quartz Models	See Model Chart
Power Consumption	1 VA
Switch Type	SPDT
Resistive	21 A, 250 VAC, 60 Hz
Motor	1 HP, 120 VAC; 2 HP, 250 VAC
Operating Temperature	-40° F to 185° F (-40° C to 85° C) -4° F to 131° F (-20° C to 55° C) with battery backup
Operating Humidity	0 to 95%, Non-condensing
Battery Backup Option	7-Day carry-over "Q" Quartz Models
Wiring Connections	Screw terminal accepts up to #12 AWG wire
Shipping Weight	1.607 lbs (0.729 kg)
Warranty	1-year limited

Wiring Diagrams

Typical Wiring for GMX Series

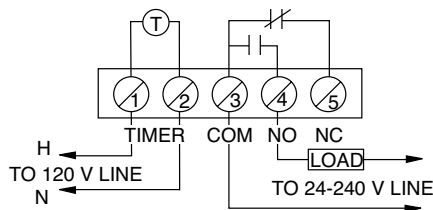
120 V Timer and Load



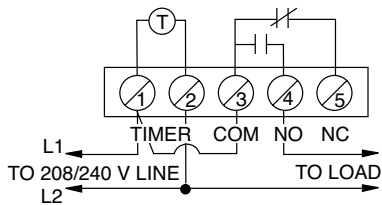
Wiring Diagrams

Typical Wiring for GMX Series

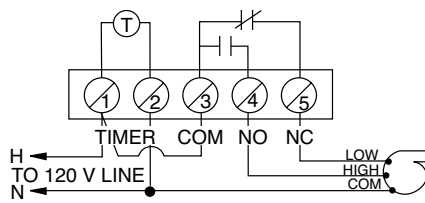
120 V Timer 24-240 V Load



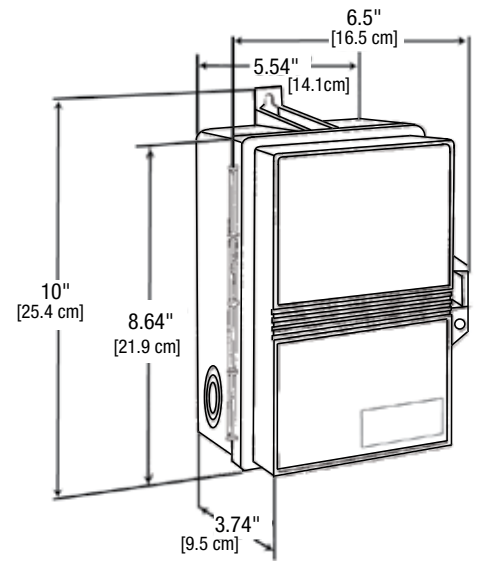
208/240 V Timer and Load



120 V Two Speed Fan

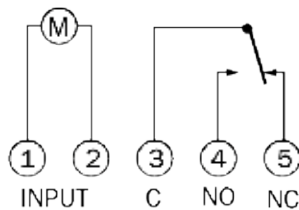


Enclosure Dimensions



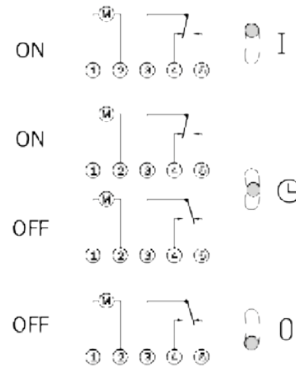
Terminal Connections

Off position with trippers pushed in (trippers pushed out will close contacts 3 and 4 and turn load on)



3 way manual override switch

I = permanent ON
L = automatic
O = permanent OFF



SPECIFIERS GUIDE

Furnish and install a Grässlin GMX____ (24-Hour) (7-Day) Time Switch with____ (15-Minute) (2-Hour) captive trippers and____ (Quartz) (Synchronous) drive. Input voltage shall be____ (12) (24) VDC, (12) (24) (120) (220) (208/240) VAC, and SPDT contacts shall be rated at 21 A, 2 HP @ 240 VAC. To set the starting time and provide time indication, the unit shall have an authentic clock face with hour and minute hands. Enclosure to be____ (UL Type 1) (UL Type 3R). The time switch shall contain a 3-way ON/OFF/AUTO manual override. (The time switch shall have a quartz drive with 7-Day reserve carry-over from a self-recharging battery).