

Accessories

For Types MS116, MS132, MS45x, MS49x

Locking accessories

For use with MS...

116	132	45x	49x	Description	Catalog number
•				Lock adapter	SA1
•	•	•	•	Padlock + 2 keys	SA2
•				Lock adapter + padlock + 2 keys	SA3

Note: Types MS132 and MS4xx have integral locking mechanisms

Door mount kits - Type 12 & IP 65

For use with MS...

116	132	45x	49x	Description	Rotary positions	Catalog number
•	•			Door mount w/ handle, black/gray	On / Trip / Off	DMS132-G
•	•			Door mount w/ handle, red/yellow	On / Trip / Off	DMS132-Y

Note(s): Type MS116 devices trip to the "Off" position
Max. 3 padlocks with bail diameter Ø 4...6.5 mm

Through-door hardware - Types 1, 3R, 12 and IP 64

For use with MS...

116	132	45x	49x	Description	Rotary positions	Catalog number
•	•	•	•	Selector handle, black, defeatable, padlockable	On / Off	MSHD-LB
•	•	•	•		On / Trip / Off	MSHD-LTB
•	•	•	•	Selector handle, red/yellow, defeatable, padlockable	On / Off	MSHD-LY
•	•	•	•		On / Trip / Off	MSHD-LTY
•	•	•	•	Shaft coupler, coded, 6 mm, MSMN	-	1SAM101923R0002
•	•	•	•	Shaft coupler, un-coded, 6 mm, MSMNO	-	1SAM101923R0012
•	•	•	•	Drive spindle, 6 x 30 mm, for horizontal mounting, MSOX-30	-	1SAM101924R0013
•	•	•	•	Drive spindle, 6 x 32 mm, for vertical (standard) mounting, MSOX-32	-	1SAM101924R0003
•	•	•	•	Shaft, 6 x 85 mm	-	OXS6X85
•	•	•	•	Shaft, 6 x 105 mm	-	OXS6X105
•	•	•	•	Shaft, 6 x 130 mm	-	OXS6X130
•	•	•	•	Shaft, 6 x 180 mm	-	OXS6X180
•	•	•	•	Shaft alignment ring, MSH-AR	-	1SAM201920R1000

Note(s): Through-door selector handles are rated Type 1, 3R and 12; IP 64 degree of protection
Max. 3 padlocks with bail diameter Ø 5...8 mm
For coded shaft couplers, the "On" position is dependent on the mounting orientation of the MMP
Must have handle, shaft coupler and shaft for through-door operation. Drive spindles can replace both shaft coupler and shaft.

Enclosures - Type 12 & IP 65

For use with MS...

116	132	45x	49x	Description	Rotary positions	Catalog number
•	•			Molded plastic enclosure, black/gray	On / Trip / Off	IB132-G
•	•			Molded plastic enclosure, red/yellow	On / Trip / Off	IB132-Y
•	•			Adaptor, PG16 to 1/2 NPT	-	PG16-1/2NPT

Note(s): Type E rating for MS132 derated when using IB132 enclosures. Please contact technical support.
Type MS116 devices trip to the "Off" position
Max. 3 padlocks with bail diameter Ø 4...6.5 mm
For UL enclosure type ratings, contact technical support.

4



SA1

SA2

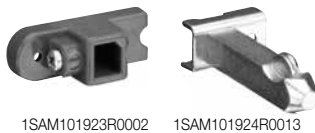


DMS132-G



MSHD-LY

MSHD-LTY



1SAM101923R0002

1SAM101924R0013



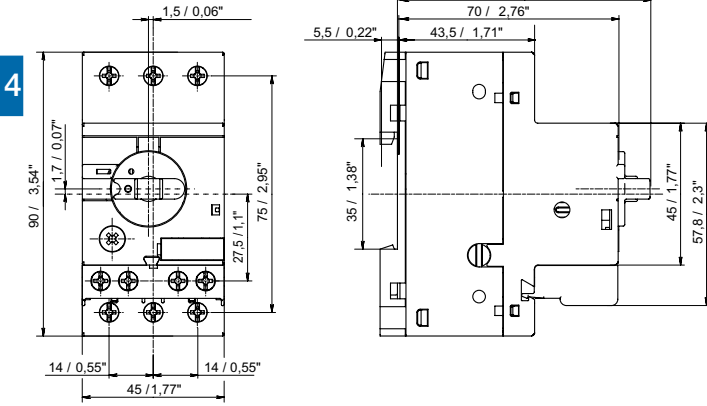
1SAM201920R1000



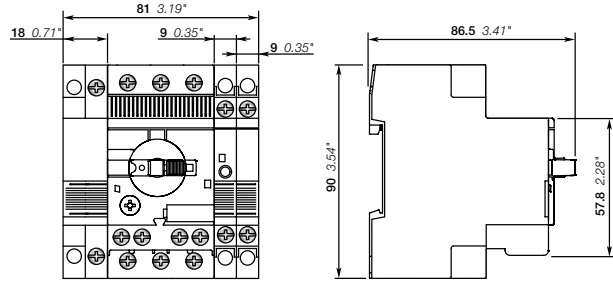
IB132-G

Approximate dimensions

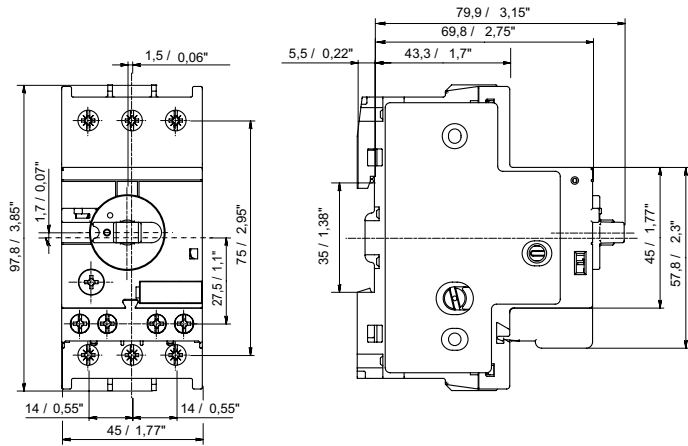
MS116-0.16... MS116-16, MS132-0.16...MS132-10



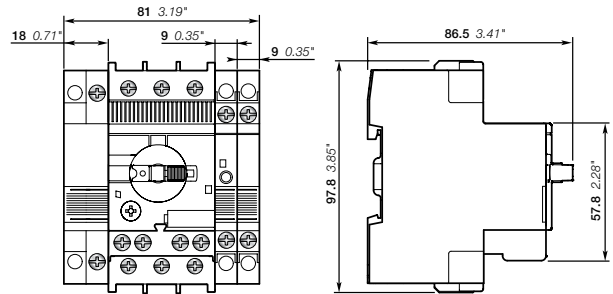
MS116-0.16...MS116-16 or MS132-0.16...MS132-10 + UA1, AA1, SK1, HK1, CK1, HKF1-11



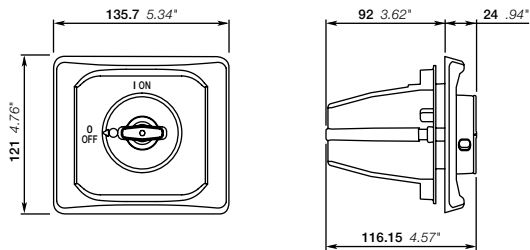
MS116-20... MS116-32, MS132-12... MS132-32



MS116-20... MS116-32 or MS132-12... MS132-32 + UA1, AA1, SK1, HK1, CK1, HKF1-11



DMS132-x



IB132-x

