



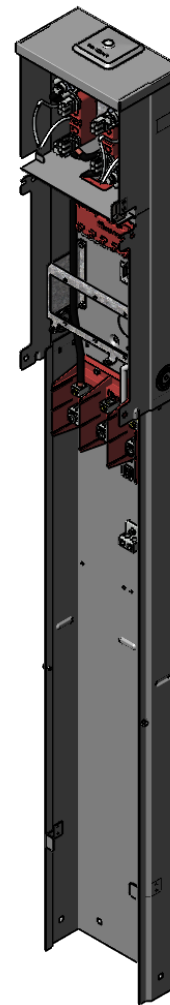
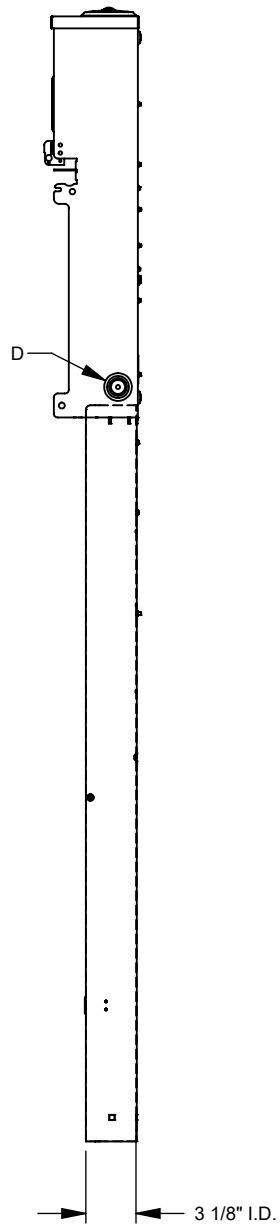
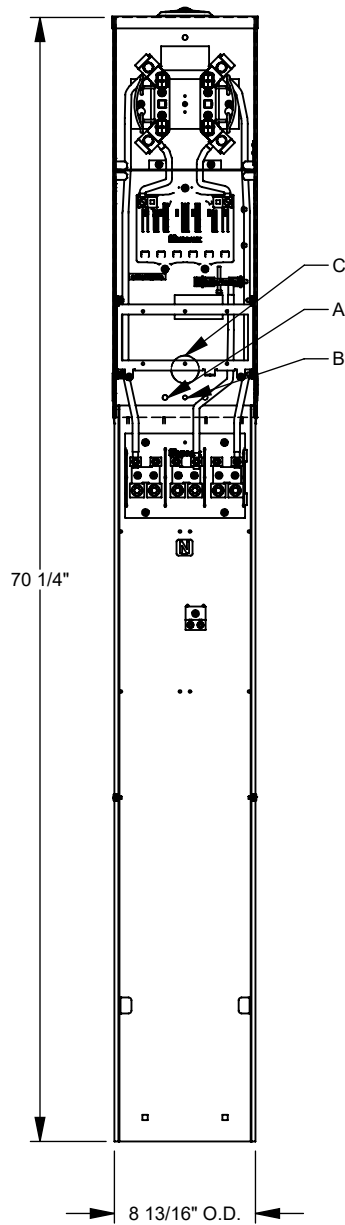
MILBANK
ENERGY AT WORK

U5301-O-75



Catalog Number	U5301-O-75	Cutout Size	One Single Pole 20 Ampere Breaker and One Single Pole 30 Ampere Breaker and One Double Pole 50 Ampere Breaker
Marketing Product Description	4 Terminal Ringless Plain Top 1450 TT30 520GR Single Pedestal Direct Bury	Cable Entry	Underground
UPC	784572370449	Terminal	Double Mechanical
Length (IN)	5.188	Insulation	Glass Polyester
Width (IN)	8.656	Mounting	Pedestal
Height (IN)	70.25	Enclosure	G90 Galvanized Steel with Powder Coat Finish
Brand Name	Milbank	Jaw Quantity	4 Terminal
Type	Ringless Meter Socket	Bypass Type	No Bypass
Special Features	Single Pole 20 Ampere Breaker and Single Pole 30 Ampere Breaker and Double Pole 50 Ampere Breaker	Number of Meter Positions	Single Power Head
Application	RV Power	Equipment Ground	2 Barrel Ground Lug and Ground Bar
Standard	UL Listed;Type 3R	Hub Opening	Plain Top
Voltage Rating	Up to 240 Volts Alternating Current	Number Branch Circuits	2
Amperage Rating	125 Continuous Ampere	Number Of Receptacles	3
Phase	1 Phase	Receptacle Configuration	One NEMA 14-50 and One NEMA TT30 and One NEMA 5-20 Ground Fault
Frequency Rating	60 Hertz		
Size	5.188L x 8.656W x 70.25H		
Number Of Cutouts	3		

Please consult serving utility for their requirements prior to ordering or installing, as specifications and approvals vary by utility and may require local electrical inspector approval. All installations must be installed by a licensed electrician and must comply with all national and local codes, laws and regulations. Milbank reserves the right to make changes in specifications and features shown without notice or obligation.



FEATURE TABLE		
ITEM	QTY	DESCRIPTION
A	3	U/L MNTG.EMBOSS
B	1	1/4 SOLID K.O.
C	1	1 1/4 SOLID K.O.
D	2	1/4, 1/2, 3/4, 1, 1 1/4 CONC. K.O.



Version:

1

**All dimensions are +/- 1/16".
Drawing views are not to scale.**

Please consult serving utility for their requirements prior to ordering or installing, as specifications and approvals vary by utility, and may require local electrical inspector approval. All installations must be installed by a licensed electrician and must comply with all national and local codes, laws and regulations. Milbank reserves the right to make changes in specifications and features shown without notice or obligation.