

Rigid Steel Compression Coupling

Size Range: 1/2" - 4"

Product Series: NT Rigid / IMC Compression Coupling

Material: Solid Alloy Steel Construction

Made in the USA

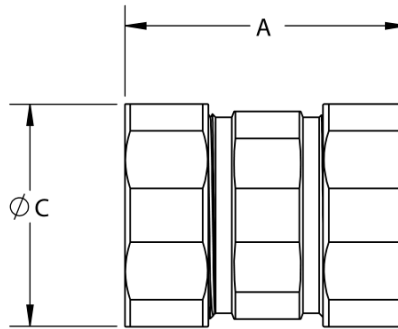
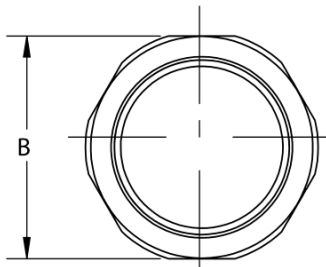
Features:

- Precision Machined Cut Threads
- AMFICO EZ **Torque** Solid Steel Compression Nuts
- Easily Torques Tight and Right
- Zinc Plated with a Chromate Finish **
- UL Rated Concrete Tight
- Suitable for Direct Burial ***

Industrial SPEC-grade
 2 1/2" thru 4" Are UL Listed & Approved For Use on Both EMT & Rigid Conduit



Compression Coupling



Compression Nuts have a Full Flat Hex Surface

Twice the Strength and Durability with
 a Fraction of the Weight and Size of Malleable Iron

Cat #	TRADE SIZE	A LENGTH	B HEX	C DIAMETER	Wt. Per/C
NT2760	1/2"	1-13/16"	1-1/8"	1-3/16"	16
NT2761	3/4"	2-1/8"	1-3/8"	1-7/16"	24
NT2762	1"	2-7/16"	1-11/16"	1-3/4"	48
NT2763	1-1/4"	2-13/16"	2-1/16"	2-3/16"	64
NT2764	1-1/2"	3-1/8"	2-15/16"	2-3/8"	110
NT2765	2"	3-1/4"	2-13/16"	2-7/16"	140
ERC250CPLG (1)	2-1/2"	3-13/16"	3-1/4"	3-7/16"	150
ERC300CPLG (1)	3"	3-15/16"	3-15/16"	4"	192
ERC350CPLG (1)	3-1/2"	3-15/16"	4-7/16"	4-9/16"	229
ERC400CPLG (1)	4"	4"	4-15/16"	5-1/8"	266

(1) 2 1/2" to 4" UL Listed and Rated for both EMT & Rigid Conduit. Product is stamped accordingly.

Compliances:

- Certified Made in the USA
- UL 514B, 467
- Compression Fittings Concrete Tight
- Suitable for Direct Burial ***
- NEMA Standard FB1
- Federal Standard A-A-50553
- Certified for MIL-STD 810 Sinusoidal Vibrations
- CSA Standard: C22.2 No. 18F
- RoHS Compliant
- REACH Compliant
- CA Prop 65 Compliant
- UNSPSC 39121311



Available OPTIONS:

RainTight Configuration - "RT series" See Catalog Page

** Galvanized Plating - Option
 For this Option, Add Suffix "G" to Above Cat Number

Color Coded Painted (powder coated) Fittings - See Catalog Page

*** Rain Tight Series Recommended for
 Direct Burial Requirements