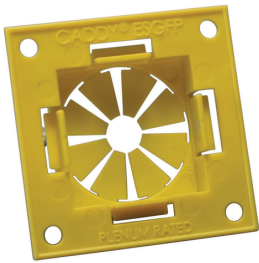




EASY SNAP GROMMET FOR FACTORY PUNCHED HOLES, 1" MAX COPPER TUBE, 1/2", 3/4", 1" EMT, 1/2", 3/4", 1" RIGID/PIPE

CATALOG NUMBER

ESGFP



FEATURES

Snap grommet into a factory punched hole of any shape

Provides anti-rattle protection

Provides 360° protection of conduit, plumbing and fire sprinkler plumbing in metal studs

Compliant with UL® 2043 and suitable for use in air handling (plenum) spaces

PRODUCT ATTRIBUTES

Material: Polyethylene

Copper Tube Size: 1" Max

EMT Conduit Size: 1/2";3/4";1"

Rigid Conduit/Pipe Size: 1/2";3/4";1"

WARNING

nVent products shall be installed and used only as indicated in nVent's product instruction sheets and training materials. Instruction sheets are available at www.nvent.com and from your nVent customer service representative. Improper installation, misuse, misapplication or other failure to completely follow nVent's instructions and warnings may cause product malfunction, property damage, serious bodily injury and death and/or void your warranty.

North America

+1.800.753.9221

Option 1 – Customer Care

Option 2 – Technical Support

Europe

Netherlands:

+31 800-0200135

France:

+33 800 901 793

Europe

Germany:

800 1890272

Other Countries:

+31 13 5835404

APAC

Shanghai:

+ 86 21 2412 1618/19

Sydney:

+61 2 9751 8500



Our powerful portfolio of brands:
nVent.com CADDY ERICO HOFFMAN RAYCHEM SCHROFF TRACER

© 2022 nVent. All nVent marks and logos are owned or licensed by nVent Services GmbH or its affiliates. All other trademarks are the property of their respective owners.

nVent reserves the right to change specifications without notice.