



MasterClass LED PL 4pin 2pin

16.5PL-L/PER/22/840/IF23/P 4P 10/1

Philips LED T8 InstantFit Lamps are an ideal energy saving choice for existing linear fluorescent fixtures.

Product data

General Information	
Cap-Base	2G11 [2G11]
RoHS mark	RoHS mark
Nominal Lifetime (Nom)	50000 h
Switching Cycle	50000X
B50L70	50000 h

Light Technical	
Color Code	840 [CCT of 4000K]
Beam Angle (Nom)	160 °
Luminous Flux (Nom)	2300 lm
Luminous Flux (Rated) (Nom)	2300 lm
Rated Beam Angle	160 °
Correlated Color Temperature (Nom)	4000 K
Color Consistency	<6
Color Rendering Index (Nom)	82
LLMF At End Of Nominal Lifetime (Nom)	70 %

Operating and Electrical	
Input Frequency	40000-160000 Hz
Power (Rated) (Nom)	16.5 W
Lamp Current (Max)	400 mA

Lamp Current (Min)	200 mA
Starting Time (Nom)	0.5 s
Warm Up Time to 60% Light (Nom)	0.5 s
Power Factor (Nom)	0.9
Voltage (Nom)	70-110 V

Temperature	
T-Ambient (Max)	45 °C
T-Ambient (Min)	-20 °C
T-Storage (Max)	65 °C
T-Storage (Min)	-40 °C
T-Case Maximum (Nom)	75 °C

Controls and Dimming	
Dimmable	No

Approval and Application	
Energy Saving Product	Yes
Approval Marks	UL certificate RoHS compliance DLC compliance

MasterClass LED PL 4pin 2pin

DesignLights Consortium Qualified Product List	DesignLights Consortium Qualified Product List
Product Data	
Order product name	16.5PL-L/PER/22/840/IF23/P 4P 10/1
EAN/UPC - Product	046677532918
Order code	929001893704

Numerator - Quantity Per Pack	1
Numerator - Packs per outer box	10
Material Nr. (12NC)	929001893704
Net Weight (Piece)	0.170 kg

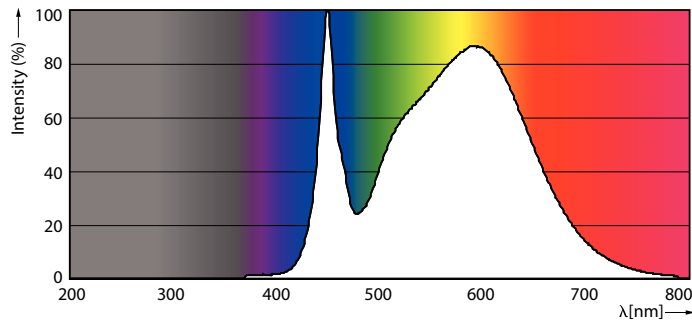
Dimensional drawing



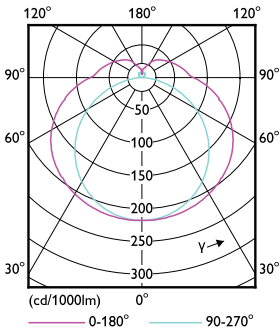
PLED PLL 120V 14-40W 2100lm 4000K 2G11

Product	D	D1	A1	A2	A3
16.5PL-L/PER/22/840/IF23/P 4P 10/1	40.6 mm	20 mm	501 mm	564 mm	570.6 mm

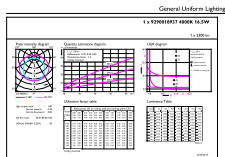
Photometric data



16-5W 2G11



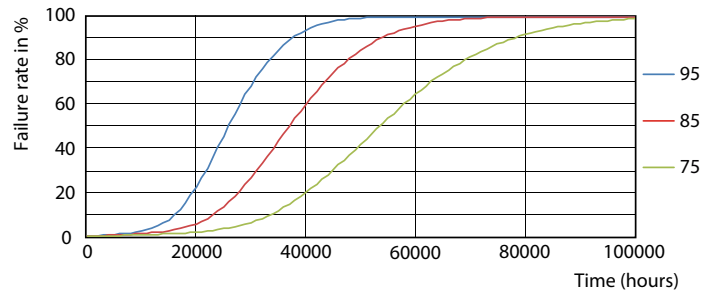
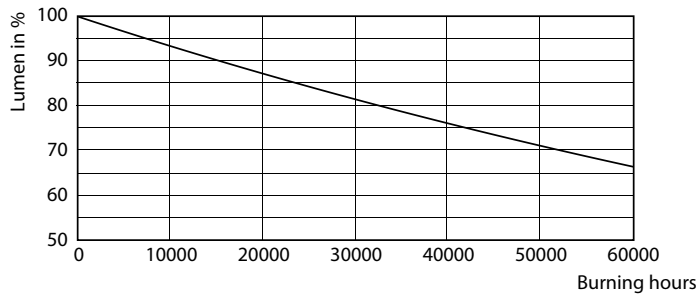
16-5W 2G11 830 3000K



16-5W 2G11 840 4000K

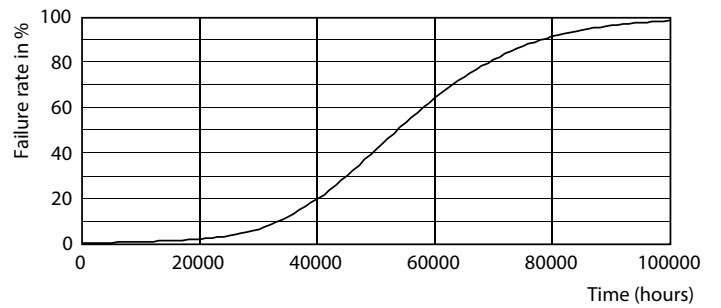
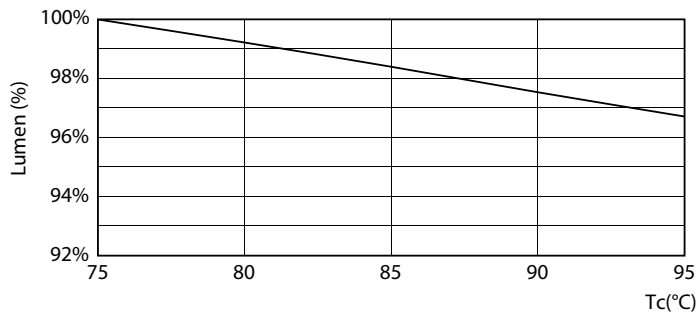
MasterClass LED PL 4pin 2pin

Lifetime



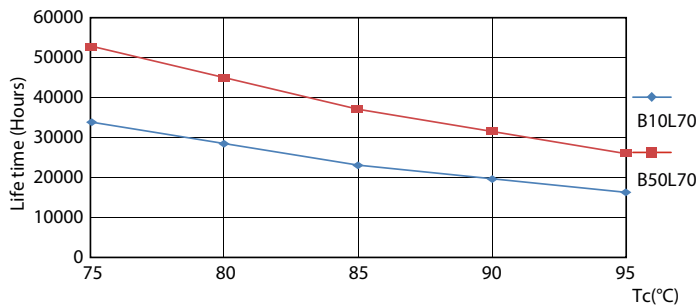
16-5W 2G11

16-5W 2G11



16-5W 2G11

16-5W 2G11



16-5W 2G11

MasterClass LED PL 4pin 2pin

