

Pico®



### Wireless Controller

|                                  |                                  |                                    |                                    |
|----------------------------------|----------------------------------|------------------------------------|------------------------------------|
| PJ-2B<br>3 V <sub>DC</sub> 10 mA | PJ-3B<br>3 V <sub>DC</sub> 10 mA | PJ-2BRL<br>3 V <sub>DC</sub> 10 mA | PJ-3BRL<br>3 V <sub>DC</sub> 10 mA |
|----------------------------------|----------------------------------|------------------------------------|------------------------------------|

#### Important Notes

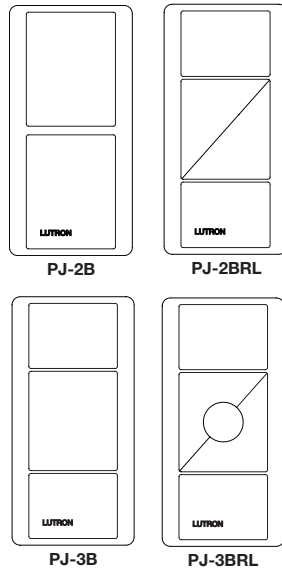
##### Please Read Before Installing

- The Wireless Controller uses one (1) CR2032 battery (pre-installed). **DO NOT** use rechargeable batteries. Using improper batteries could damage the Wireless Controller. **DO NOT** dispose of the battery in normal household waste. Please recycle, take to a proper battery disposal facility, or contact your local waste disposal provider regarding local restrictions on the disposal or recycling of batteries.



**Warning: Risk of fire, explosion and burns. May result in Serious injury or death. DO NOT** recharge, disassemble, crush, puncture, heat above 212 °F (100 °C) or incinerate the battery. The battery in this device contains Perchlorate Material – special handling may apply. For more information visit [www.dtsc.ca.gov/hazardouswaste/perchlorate](http://www.dtsc.ca.gov/hazardouswaste/perchlorate)

- The Wireless Controller must be set up to Dimmer(s)/ Switch(es) before it can communicate.
- Up to 10 Pico® controls can be configured to work together in a Maestro Wireless® system.
- The range of the Pico® is 30 ft (9 m). Performance is highly dependent on a variety of complex factors such as:
  - Distance between system components
  - Geometry of the building structure
  - Construction of walls separating system components
  - Electrical equipment located near system components
- Clean Wireless Controller with a soft damp cloth only. DO NOT** use any chemical cleaners.
- DO NOT** paint Wireless Controller.
- DO NOT** mount the wireless control to a metal surface.



#### Mounting Accessories

(sold separately)

For a complete listing of Pico® mounting accessories, please visit [www.lutron.com/Pico](http://www.lutron.com/Pico)

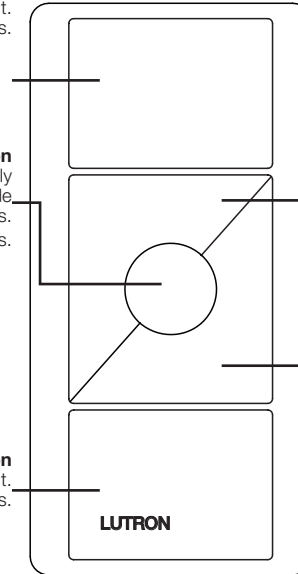


### Operation | Operation | Operation

**Top Button**  
Lights brighten to full intensity; shades/drapes go to open limit.  
Activates Scene 1 when used in scene mode with GRAFIK Eye® QS wireless applications.

**Preset Button**  
3B / 3BRL Only  
Activates Scene 16 when used in scene mode with GRAFIK Eye® QS wireless applications.  
**Tap once:** Devices go to preset levels/positions.  
**Press and Hold:** To save new preset level or position, press and hold for 6 seconds.

**Bottom Button**  
Lights dim to off; shades/drapes go to close limit.  
Activates Off Scene when used in scene mode with GRAFIK Eye® QS wireless applications.



**Raise Button**  
2BRL / 3BRL Only  
Lights increase in intensity; shades/drapes move toward open limit.

**Lower Button**  
2BRL / 3BRL Only  
Lights decrease in intensity; shades/drapes move toward close limit.

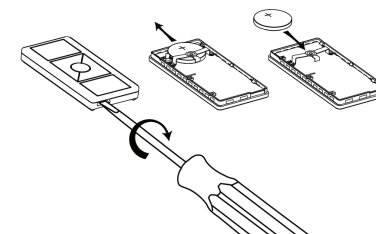
#### Wireless Control of Multiple Dimmers/Switches

If multiple Wireless Dimmers/Switches are set up to the same Wireless Controller, they will perform as follows:

- Pressing the On Button on the Wireless Controller will cause all Dimmers/Switches to turn on fully.
- Pressing the Off Button on the Wireless Controller will cause all Dimmers/Switches to turn off completely.
- Pressing the Raise Button (BRL Models Only) on a Wireless Controller will cause all Dimmers to turn on and gradually increase in intensity.
- Pressing the Lower Button (BRL Models Only) on a Wireless Controller will cause all Dimmers to gradually decrease in intensity.
- Pressing the Preset Button (3B & 3BRL Only) on a Wireless Controller will cause all Dimmers to return to their favorite light settings. Switches can be configured to return to on or off, see step 5 **Set-Up**.

#### Replacing the Battery in a Pico® Wireless Controller

- Place a flathead screwdriver into the slot at the bottom of the Pico® Wireless Controller. Twist to open.
- Slide the battery out, toward the top of the Wireless Controller.
- Slide a new battery underneath the contact strap, with the (-) terminal toward the front of the Wireless Controller.
- Replace the back enclosure.
- Confirm proper installation by turning the receiving device on and off using the Pico®.



**Set-Up**  
(for Maestro Wireless® only)

For communicating with other systems or devices, including Radio RA® 2, QS Sensor Module, Quantum®, Homeworks® QS, Sivoia® QS, and GRAFIK Eye® QS, refer to those system setup guides. See [www.lutron.com/pico](http://www.lutron.com/pico) for more information.

**Important:** Set up Wireless Controller to a Dimmer/Switch before use.

1. Press and hold the Dimmer/Switch's Tap Button (Figure 1) for approximately 6 seconds. Once the LED(s) start to blink slowly, release the Tap Button.
2. Press and hold the Off Button on the Wireless Controller (Figure 2) for approximately 6 seconds.
3. Once the Dimmer/Switch learns the Wireless Controller, the LED(s) on the Dimmer/Switch and load will flash 3 times and it will exit Set-Up mode.
4. Repeat steps 1 to 3 to set up multiple Wireless Controllers to a single Dimmer or Switch. Repeat steps 1 to 3 to set up a single Wireless Controller to multiple Dimmers/Switches.
5. Pressing the Preset Button (3B and 3BRL Only) on a Wireless Controller will cause all Dimmers to return to their favorite light settings. Switches can be configured to return to on or off. To save a favorite light setting, adjust all the Dimmers/Switches controlled by a Wireless Controller to the desired light setting. Then press and hold the Preset Button on the Wireless Controller for approximately 6 seconds until all LEDs on the Dimmers/Switches flash several times. (3B & 3BRL Only)

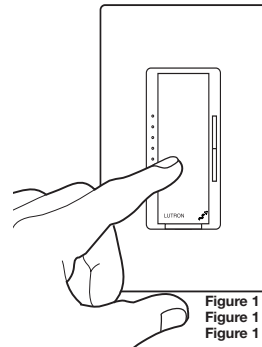


Figure 1  
Figure 1  
Figure 1

**Troubleshooting**

| Symptoms  | Possible Causes   |
|---|---|
| Light does not respond to Wireless Controller   | <ul style="list-style-type: none"> <li>• The Dimmer/Switch failed to learn Wireless Controller; see <b>Set-Up</b>.</li> <li>• The Dimmer/Switch has already received and responded to a command or is already at the Light Setting the Wireless Controller is requesting.</li> <li>• The Wireless Controller is outside the 30 ft (9 m) operating range.</li> <li>• The battery in the Wireless Controller is low.</li> <li>• The battery in the Wireless Controller is installed incorrectly.</li> </ul> |
| When in set-up mode the LEDs flash when trying to setup with the Wireless Controller or Sensor. | <ul style="list-style-type: none"> <li>• The maximum number of Wireless Controllers have been set up to the Dimmer/Switch. You cannot add any more Wireless Controllers or Sensors. See <b>Removing Wireless Controller in Set-Up</b>.</li> </ul>   |

**Removing Wireless Controller**

(for Maestro Wireless® only)

To remove a previously set up Wireless Controller, tap the On button on the Wireless Controller three times, on the third tap hold for 3 seconds and then tap 3 more times. This will remove all Dimmers/Switches it was previously set up with.

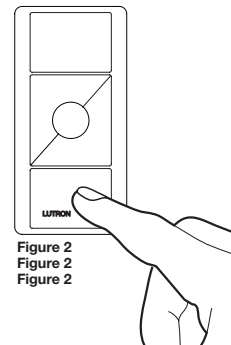


Figure 2  
Figure 2  
Figure 2

**Technical Assistance**

For questions concerning the installation or operation of this product, call the **Lutron Technical Support Center**.

Please provide exact model number when calling.  
**U.S.A. and Canada (24 hours / 7 days)** 1.800.523.9466  
**Fax** +1.610.282.6311  
**Mexico** 1.888.235.2910  
**Other countries 8 am – 8 pm ET** +1.610.282.3800  
[www.lutron.com](http://www.lutron.com)

Lutron, the sunburst logo, Pico, RadioRA, Quantum, Homeworks, Sivoia, Maestro Wireless, and GRAFIK Eye are registered trademarks and FASS is a trademark of Lutron Electronics Co., Inc.  
 © 2011 Lutron Electronics Co., Inc.