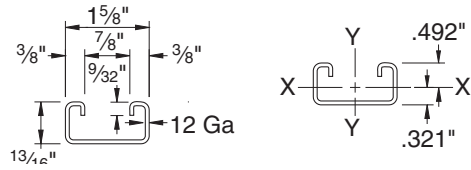
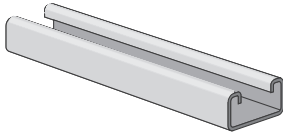


# CHANNEL



Finish: Plain, Painted Green, or Pregalvanized Order By: No., Length and Finish

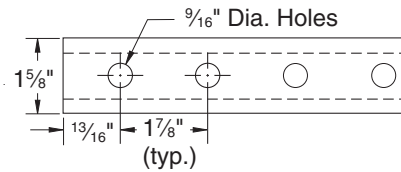
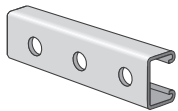
## PS 520 – Steel Channel (1<sup>5</sup>/<sub>8</sub>" x 1<sup>3</sup>/<sub>16</sub>" x 12 ga.)



### ELEMENTS OF SECTION – PS 520

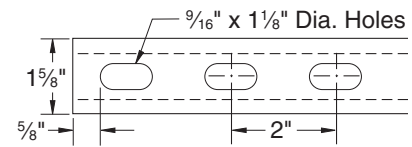
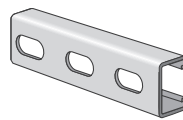
Weight (lbs./100 ft.)	Area of Section (Inch <sup>2</sup> )	X-X Axis			Y-Y Axis		
		Moment of Inertia (Inch <sup>4</sup> )	Section Modulus (Inch <sup>3</sup> )	Radius of Gyration (Inch)	Moment of Inertia (Inch <sup>4</sup> )	Section Modulus (Inch <sup>3</sup> )	Radius of Gyration (Inch)
131	0.384	0.031	0.064	0.283	0.138	0.170	0.599

## PS 520 H – Channel with Holes



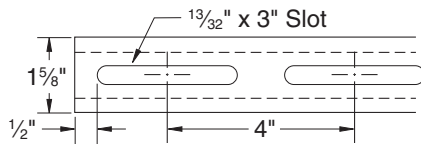
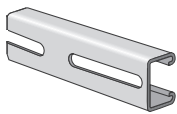
Weight: 120 lbs./100 ft.

## PS 520 EH – Channel with Elongated Holes



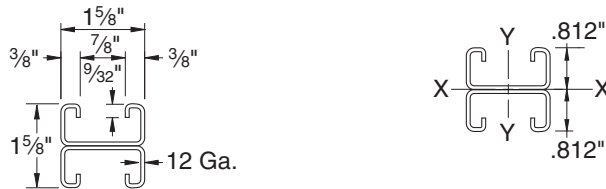
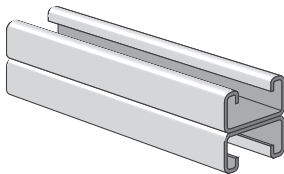
Weight: 120 lbs./100 ft.

## PS 520 S – Channel with Slots



Weight: 118 lbs./100 ft.

## PS 520 2T3 – Steel Channel (1<sup>5</sup>/<sub>8</sub>" x 1<sup>5</sup>/<sub>8</sub>" x 12 ga.)



### ELEMENTS OF SECTION – PS 520 2T3

Weight (lbs./100 ft.)	Area of Section (Inch <sup>2</sup> )	X-X Axis			Y-Y Axis		
		Moment of Inertia (Inch <sup>4</sup> )	Section Modulus (Inch <sup>3</sup> )	Radius of Gyration (Inch)	Moment of Inertia (Inch <sup>4</sup> )	Section Modulus (Inch <sup>3</sup> )	Radius of Gyration (Inch)
262	0.770	0.146	0.180	0.436	0.277	0.340	0.599