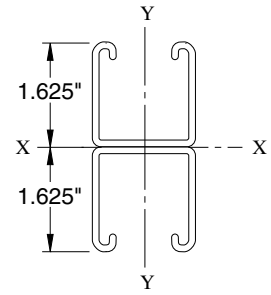
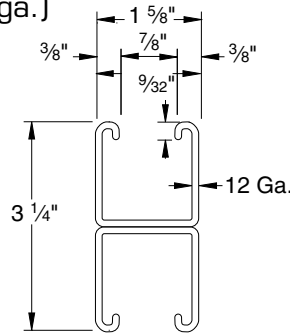
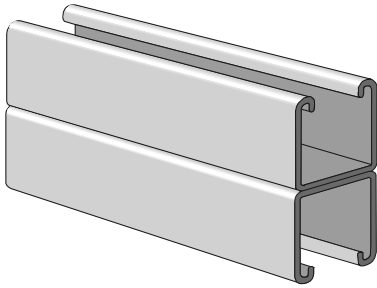


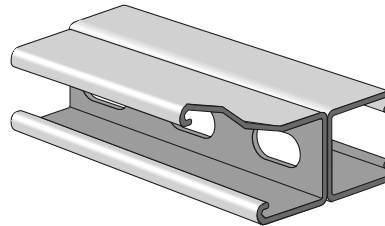
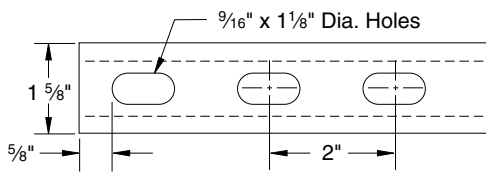
# CHANNEL

Finish: Plain, Painted Green, or Pregalvanized Order By: No., Length and Finish

## PS 200 2T3 – Steel Channel (1<sup>5/8</sup>" x 3<sup>1/4</sup>" x 12 ga.)



## PS 200 EH 2T3 – Channel with Elongated Holes



Weight:  
370 lbs./100 ft.

### ELEMENTS OF SECTION

Weight (lbs./100 ft.)	Area of Section (Inch <sup>2</sup> )	X-X Axis			Y-Y Axis		
		Moment of Inertia (Inch <sup>4</sup> )	Section Modulus (Inch <sup>3</sup> )	Radius of Gyration (Inch)	Moment of Inertia (Inch <sup>4</sup> )	Section Modulus (Inch <sup>3</sup> )	Radius of Gyration (Inch)
378	1.112	0.930	0.572	0.915	0.472	0.580	0.651

### BEAM LOADING – PS 200 2T3

Span In	Max Allowable Uniform Load Lbs	Defl. at Uniform Load In	Uniform Loading at Deflection		
			Span/180 Lbs	Span/240 Lbs	Span/360 Lbs
24	3,130 *	0.03	3,130 *	3,130 *	3,130 *
36	3,130 *	0.07	3,130 *	3,130 *	3,130 *
48	2,400	0.13	2,400	2,400	2,400
60	1,920	0.20	1,920	1,920	1,630
72	1,600	0.28	1,600	1,600	1,130
84	1,370	0.39	1,370	1,240	830
96	1,200	0.50	1,200	950	640
108	1,070	0.64	1,000	750	500
120	960	0.79	810	610	410
144	800	1.13	560	420	280
168	690	1.54	410	310	210
192	600	2.01	320	240	160
216	530	2.55	250	190	130
240	480	3.15	200	150	100

### COLUMN LOADING – PS 200 2T3

Unbraced Height In	Maximum Allowable Load at Slot Face Lbs	Maximum Column Load Applied at C.G.			
		K = 0.65 Lbs	K = 0.80 Lbs	K = 1.0 Lbs	K = 1.2 Lbs
24	6,430	25,060	24,620	23,900	23,050
36	6,230	24,000	23,050	21,570	19,890
48	5,950	22,590	21,030	18,690	16,170
60	5,620	20,890	18,690	15,540	12,400
72	5,240	18,990	16,170	12,400	8,960
84	4,830	16,970	13,640	9,470	6,580
96	4,390	14,900	11,200	7,250	5,040
108	3,930	12,860	8,960	5,730	3,980
120	3,510	10,910	7,250	4,640	**

Column loads are for allowable axial loads and must be reduced for eccentric loading.

\*Load limited by spot weld shear.

For concentrated load at center of span, divide uniform load by 2 and multiply corresponding deflection by 0.8. This load table is based on a solid channel section.

For pierced section, PS200 EH 2T3, reduce beam load values by 15%.