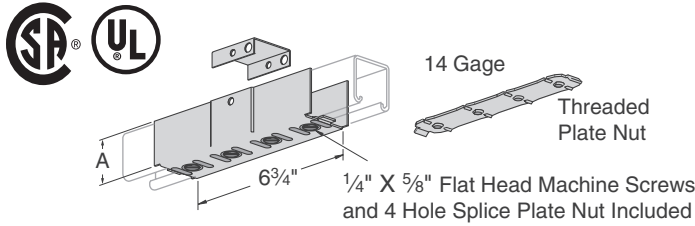


ELECTRICAL

Finish: Painted Green or Pregalvanized Stock Length: 10' & 20' Order By: No., Size and Finish



PS 649, PS 693, PS 694, PS 805, PS 942, PS 2582 – Electrical Joiner



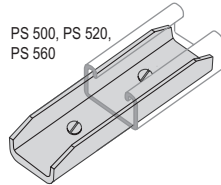
Stock Size: (.060)

Assembly: 1 Splice Plate Clevis (GRN),
1 Tapped Plate (EG), 1 Backplate (GRN),
4 Flat Head Machine Screws (EG).

Part No.	A	Use With	Finish	Wt./100 pcs
PS 805		PS 100	EG, GRN	106
PS 2582	1 5/8"	PS 150	EG	103
PS 649		PS 200, PS 210	EG, GRN	100
PS 694	1 3/8"	PS 300		97
PS 693	1 1/16"	PS 400		97
PS 942	1 3/16"	PS 500, PS 520		80

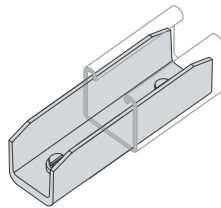
PS 2700 – Inside Strut Joiner

Material: Extruded aluminum
Jam screws included



Weight/100 pcs: 12 lbs.

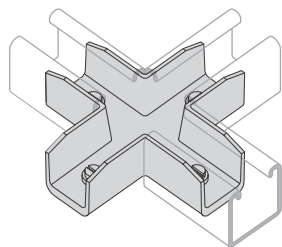
PS 2800 – Inside Strut Joiner



Material: Cast aluminum or electro-galvanized
Jam screws included
Note: electro-galvanized is not UL Listed

Weight/100 pcs: 20 lbs.

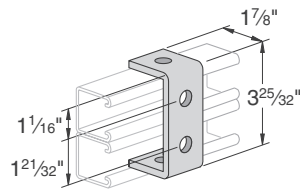
PS 2803 – “Cross” Inside Strut Joiner



Material: Cast aluminum
Jam screws included

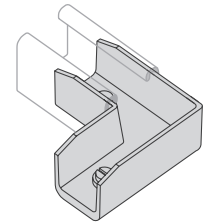
Weight/100 pcs: 45 lbs.

PS 671 – Strut Suspension Member



Weight/100 pcs: 70 lbs.

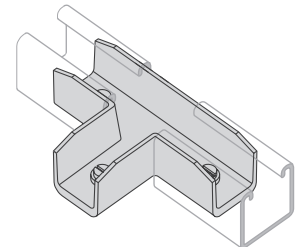
PS 2802 – “Elbow” Inside Strut Joiner



Material: Cast aluminum
Jam screws included

Weight/100 pcs: 27 lbs.

PS 2801 – “T” Inside Strut Joiner



Material: Cast aluminum
Jam screws included

Weight/100 pcs: 35 lbs.