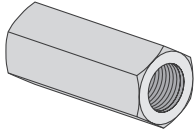


## PS 135 – Rod Coupling



Rod Size	Max Load lbs.	Wt./ 100 pcs.
1/4"	240	2
3/8"	610	9
1/2"	1,130	10
5/8"	1,810	18
3/4"	2,710	28

### MATERIAL:

Square and hex nuts meet ASTM A563 GR A.

### SCREW THREADS DATA:

All Power-Strut nuts and bolts are manufactured to meet the Unified Screw Threads standard, ANSI B1.1, Coarse Series UNC, class 2.

### STANDARD FINISH:

All fasteners have an electro-galvanized finish.

Project: \_\_\_\_\_

Approval Stamp:

Architect / Engineer: \_\_\_\_\_

Date: \_\_\_\_\_ Phone: \_\_\_\_\_

Contractor: \_\_\_\_\_

Address: \_\_\_\_\_

\_\_\_\_\_

Notes 1: \_\_\_\_\_

\_\_\_\_\_

Notes 2: \_\_\_\_\_

\_\_\_\_\_