

Ladder Rack Support Triangle Wall Kit

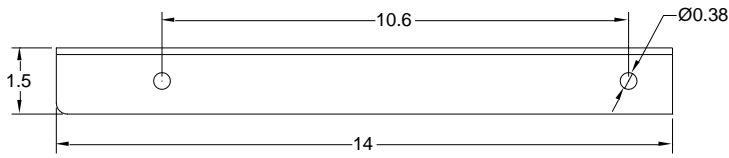
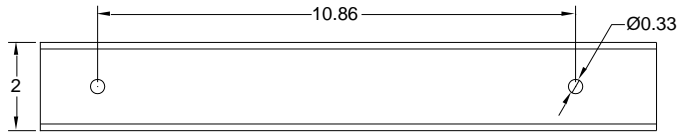


Package Includes:

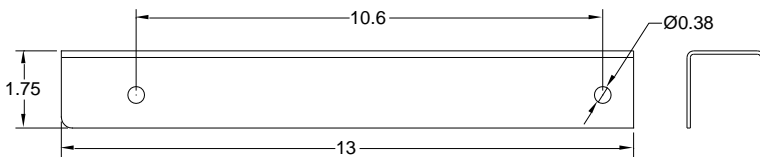
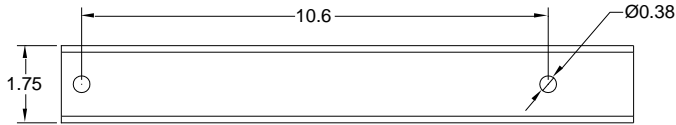
- A. Top Support, **1 Piece**
- B. Wall Mount Support, **1 Piece**
- C. Angle Support, **1 Piece**
- D. 3/8-16 x 2 1/4" Bolt, **3 Pieces**
- E. 3/8-16 Nylon Lock Nut, **3 Pieces**
- F. 3/8 Space Washer, **3 Pieces**
- G. 5/16-18 x 3" J-Bolt, **2 Pieces**
- H. 5/16-18 Nut, **2 Pieces**
- I. 5/16 Lock Washer, **2 Pieces**

Features and Benefits

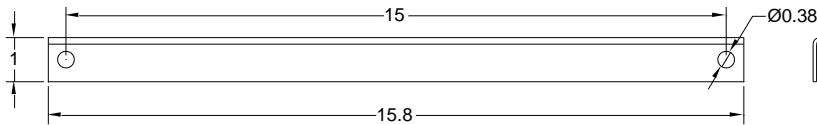
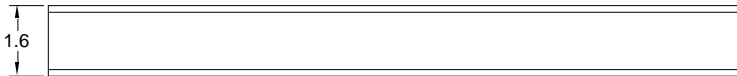
- Designed with durable steel construction, black textured powder coated, providing strength and stability for long lasting use
Designed to form a triangle wall mounting support after assembly and hold Ladder Rack Cable Runways parallel to the wall
- Used with ICCMSLST Ladder Rack Cable Runways



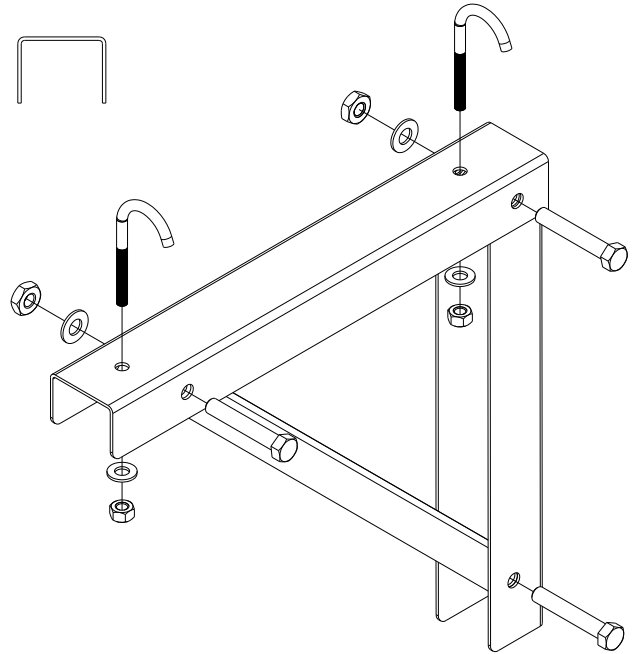
Top Support



Wall Mount Support



Angle Support



NOTE: UNLESS OTHERWISE SPECIFIED

- Material: 14GA CRS
- Surface Finish: Textured Black Powder Coat