

STEEL BOXES  
COVERS  
FITTINGS  
ACCESSORIES

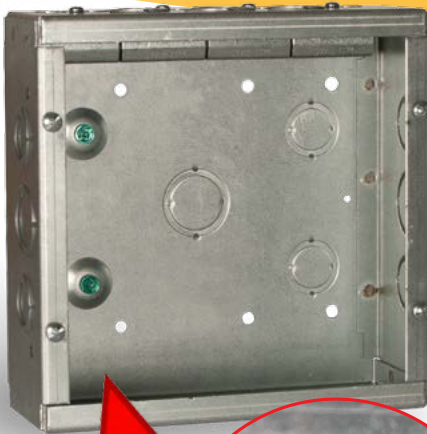
**RACO**<sup>®</sup>

*Commercial, Industrial and Residential Electrical Products*

# **RACO**<sup>®</sup> GRAND SLAM BOX

**“Better than a Home Run”**

**NEW!**



with  
built-in STAB-IT<sup>®</sup>  
clamps for MC

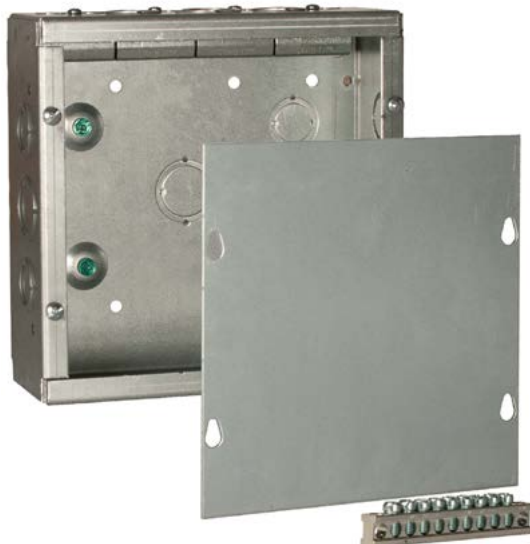


## **Application**

RACO's Grand Slam Box is the quickest and easiest way to terminate home runs and other electrical wiring. Specifically designed for commercial applications, the Grand Slam Box offers both the flexibility and space desired in a junction box. Featuring RACO's patented STAB-IT<sup>®</sup> clamps for MC built-in, the Grand Slam Box offers the most labor savings and flexibility of any home run box on the market.

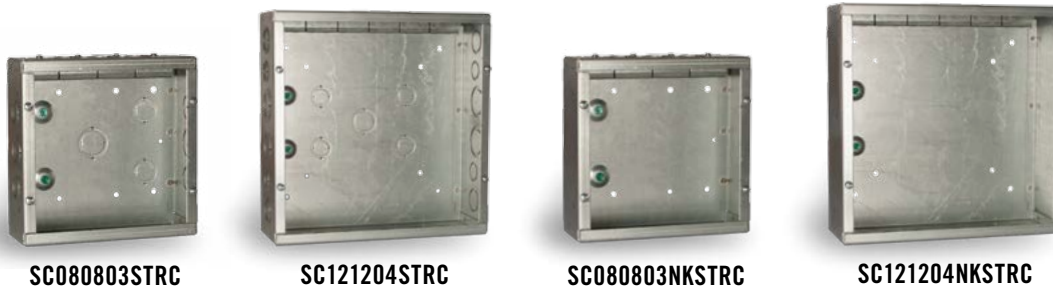
## **Features**

- Patented STAB-IT<sup>®</sup> clamp has been tested at over 3X's faster than traditional MC connectors
- Designed for quick installation of flex, MC, MCI, MCI-A, HCF, AC and EMT
- Surface mount cover and ground bar included
- Available in two sizes to meet customer preference and job requirements
- Two raised grounds for installation flexibility
- Available with concentric knockouts on side and back for easy access
- UL Listed



*Surface Mount Cover and  
Ground Bar Included*

**EC&M**  
**Product of the Year**  
2018 Category Winner



| Catalog No.    | Description   | Dimensions     | Knockouts   | Built-in STAB-IT® Clamps            | Cu.In. Cap. | Carton Qty. |
|----------------|---|----------------|---|-------------------------------------|-------------|-------------|
| SC080803STRC   | 8" x 8" Junction Box<br>(Surface Cvr. & Grnd. Bar Included)   | 8" x 8" x 3"   | (12) 1/2" & 3/4" Concentric<br>(5) 3/4" & 1" Concentric                               | 4 (14/2 to 10/3)<br>Up to 8 Cables  | 179         | 1           |
| SC121204STRC   | 12" x 12" Junction Box<br>(Surface Cvr. & Grnd. Bar Included) | 12" x 12" x 4" | (12) 1/2" & 3/4" Concentric<br>(9) 3/4" & 1" Concentric<br>(8) 1" & 1-1/4" Concentric | 6 (14/2 to 10/3)<br>Up to 12 Cables | 546         | 1           |
| SC080803NKSTRC | 8" x 8" Junction Box<br>(Surface Cvr. & Grnd. Bar Included)   | 8" x 8" x 3"   | —   | 4 (14/2 to 10/3)<br>Up to 8 Cables  | 179         | 1           |
| SC121204NKSTRC | 12" x 12" Junction Box<br>(Surface Cvr. & Grnd. Bar Included) | 12" x 12" x 4" | —   | 6 (14/2 to 10/3)<br>Up to 12 Cables | 546         | 1           |



Flush Mount Cover  
(sold separately)

STAB-IT  
Connector

| Catalog No. | Description  | Dimensions | Carton Qty. |
|-------------|--|------------|-------------|
| SCF0808RC   | Flush Mount Cover  | 8" x 8"    | 1           |
| SCF1212RC   | Flush Mount Cover  | 12" x 12"  | 1           |
| 989ST       | STAB-IT® Connector (accepts 2 cables)<br>Works with all Grand Slam boxes | x          | 50          |

### CABLE TYPES AND RANGES FOR STAB-IT® II CLAMP

| CABLE TYPE  | CABLE RANGE                                    |
|---|--|
| AC STEEL & ALUMINUM   | 14-2, 14-3, 14-4, 12-2, 12-3, 12-4, 10-2, 10-3 |
| HCF AC STEEL  | 14-2, 14-3, 14-4, 12-2, 12-3, 10-2, 10-3       |
| HCF AC ALUMINUM   | 12-2, 12-3, 12-4, 10-2, 10-3                   |
| MC STEEL & ALUMINUM   | 14-2, 14-3, 14-4, 12-2, 12-3, 12-4, 10-2, 10-3 |
| MCI-A STEEL & ALUMINUM  | 14-2, 14-3, 14-4, 12-2, 12-3, 12-4, 10-2, 10-3 |
| HCF MCI-A STEEL   | 12-2, 12-3, 10-2                               |
| HCF MCI-A ALUMINUM  | 14-2, 14-3, 14-4, 12-2, 12-3, 12-4, 10-2, 10-3 |
| MC-PCS STEEL & ALUMINUM   | 12-2/16-2                                      |
| HCF MC-PCS ALUMINUM   | 12-2/16-2                                      |
| <b>3/8 TRADE SIZE FLEX. RWFMC CONDUIT STEEL &amp; ALUMINUM</b><br>Anti Short Bushing Required |  |

**CABLE RANGE .400" DIA. MIN. TO .625" DIA. MAX.**

Cable Armor must comply with NEC 250.96.  
For cable diameter larger than 0.55", reset spring clip as shown on instructions.  
To remove cable:  
Loosen up screw, pull spring clip away from cable and pull cable out. See instruction sheet.  
To install more cables use any of the knockouts with RACO® REDI-LOC® connectors.



**COMMERCIAL  
CONSTRUCTION**  
A Division of Hubbell Incorporated (Delaware)

**RACO**  
3902 W. Sample St.  
South Bend, IN 46619  
574-234-7151  
[www.hubbell.com/raco/en](http://www.hubbell.com/raco/en)



Literature Code#  
RA-430 rev3