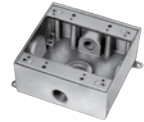
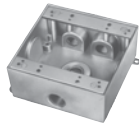


## FS Boxes and Covers

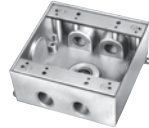
### Two and three Gang



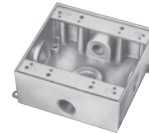
S400CN/ 2IH3



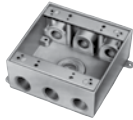
2IH4



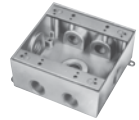
S401CN/ S402CN/ 2IH5-1



2IH5S2



2IH7



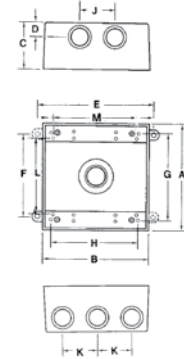
2IH7S2



2IHD5



3IHD7



Cat. No.	No. of Hubs	Hub Size (in.)	A (in.)	B (in.)	C (in.)	D (in.)	E (in.)	F (in.)	G (in.)	H (in.)	J (in.)	K (in.)	L (in.)	M (in.)	Cu. (in.)									
<b>Two Gang Outlet Boxes – 2 in. Deep (Cast Aluminum)</b>																								
S400CN	3	1/2	4-9/16	4-5/8	2-1/16	5/8	5	3-1/2	3-11/16	3-3/4	-	-	3-1/4	3-9/16	31.8									
2IH3-1		1/2																						
2IH3-2		3/4																						
2IH4-1	4	1/2																						
2IH4-2		3/4																						
S401CN		1/2																						
S402CN	3/4																							
2IH5-1	5	1/2																						
2IH5S2-1		1/2																						
2IH5S2-2		3/4																						
2IH7-1	7	1/2									-	1-1/2	-	-		-	-	-	-	-	-	-	-	-
2IH7-2		3/4																						
2IH7S2-1		1/2																						
2IH7S2-2		3/4																						



Cat. No.	No. of Hubs	Hub Size (in.)	A (in.)	B (in.)	C (in.)	D (in.)	E (in.)	F (in.)	G (in.)	H (in.)	J (in.)	L (in.)	M (in.)	Cu. (in.)	
<b>Two Gang Outlet Boxes – 2-5/8 in. Deep (Cast Aluminum)</b>															
2IHD5-1	5	1/2	4-9/16	4-5/8	2-11/16	5/8	5	3-1/2	3-11/16	3-3/4	1-1/2	3-1/4	3-9/16	40.3	
2IHD5-2		3/4													
2IHD5-3		1													



Cat. No.	No. of Hubs	Hub Size (in.)	A (in.)	B (in.)	C (in.)	D (in.)	E (in.)	F (in.)	G (in.)	H (in.)	K (in.)	L (in.)	M (in.)	Cu. (in.)	
<b>Three Gang Outlet Boxes - 2-5/8 in. Deep (Cast Aluminum)</b>															
3IHD7-2*	7	3/4	4-9/16	6-7/16	2-11/16	1-3/16	6-13/16	3-1/2	3-1/4	5-5/8	1-1/2	3-1/4	3-9/16	54.8	
3IHD7-3*		1													

\* Not CSA approved  
Raintight when used with appropriate Red Dot® covers